

## **APRILIA WOULD LIKE TO THANK YOU**

for choosing one of its products. We have compiled this booklet to provide a comprehensive overview of your vehicle's quality features. Please read it carefully before riding the vehicle for the first time. It contains information, tips and precautions for using your vehicle. It also describes features, details and devices to assure you that you have made the right choice. We believe that if you follow our suggestions, you will soon get to know your new vehicle well and that it will continue to give you satisfactory service for many years to come. This booklet is an integral part of the vehicle and must be handed over to the new owner in the event of sale.

# **DORSODURO 1200 - DORSODURO 1200 ABS - ATC**

The Aprilia logo, consisting of the word "aprilia" in a white, lowercase, sans-serif font, centered within a solid red rectangular background.

The instructions given in this booklet are intended to provide a clear, simple guide to using your scooter; it also describes routine maintenance procedures and regular checks that should be carried out on the vehicle at an **authorised aprilia Dealer or Workshop**. This booklet also contains instructions for simple repairs. Any operations not specifically described in this booklet require the use of special tools and/or particular technical knowledge: for these operations, please take your vehicle to an **Aprilia Dealer or Authorised Workshop**.



### **Personal safety**

Failure to completely observe these instructions will result in serious risk of personal injury.



### **Safeguarding the environment**

Sections marked with this symbol indicate the correct use of the vehicle to prevent damaging the environment.



### **Vehicle intactness**

The incomplete or non-observance of these regulations leads to the risk of serious damage to the vehicle and sometimes even the invalidity of the guarantee.

*The symbols illustrated above are very important. They are used to highlight parts of the booklet that should be read with particular care. The different symbols are used to make each topic in the manual simple and quick to locate. Before starting the engine, read this booklet carefully, particularly the "SAFE RIDING" section. Your safety as well as other's does not only depend on the quickness of your reflexes and agility, but also on how well you know your vehicle, the state of maintenance of the vehicle itself and your knowledge of the rules for SAFE RIDING. For your safety, get to know your vehicle well so as to safely ride and master it given any riding condition. **IMPORTANT** This booklet is an integral part of the vehicle, and should the vehicle be sold, it must be transferred to the new owner.*



# INDEX

**GENERAL RULES**..... 7

- Foreword..... 8
- Carbon monoxide..... 8
- Fuel..... 8
- Hot components..... 9
- Coolant..... 9
- Used engine oil and gearbox oil..... 10
- Brake and clutch fluid..... 10
- Battery hydrogen gas and electrolyte..... 11
- Stand..... 12
- Reporting of defects that affect safety..... 12

**VEHICLE**..... 13

- Arrangement of the main components..... 14
- Dashboard..... 19
- Instrument panel..... 21
- Light unit..... 22
- Digital lcd display..... 23
- Alarms..... 25
- Mapping selection..... 27
- Control buttons..... 29
- Advanced functions..... 34
- Ignition switch..... 42
- Locking the steering wheel..... 42
- Horn button..... 43
- Switch direction indicators..... 43
- Passing button..... 44
- Start-up button..... 44
- Engine stop switch..... 45
- System ABS..... 45
- System ATC (Aprilia Traction Control)..... 48
- Immobilizer system operation..... 51
- Opening the saddle..... 52
- Glove/tool kit compartment..... 54

- Identification..... 54
- Luggage anchor point..... 55

**USE**..... 57

- Checks..... 58
- Refuelling..... 61
- Rear shock absorbers adjustment..... 62
- Front fork adjustment..... 65
- Justering af greb til forbremse..... 67
- Clutch lever adjustment..... 67
- Running in..... 67
- Starting up the engine..... 68
- Ride by wire..... 72
- Moving off / riding..... 73
- Stopping the engine..... 78
- Parking..... 78
- Catalytic silencer..... 79
- Stand..... 80
- Suggestion to prevent theft..... 81
- Basic safety rules..... 82

**MAINTENANCE**..... 87

- Engine oil level check..... 88
- Engine oil top-up..... 89
- Engine oil change..... 90
- Engine oil filter replacement..... 90
- Tyres..... 91
- Spark plug dismantlement..... 92
- Removing the air filter..... 93
- Cooling fluid level..... 93
- Checking the brake oil level..... 95
- Braking system fluid top up..... 96
- Checking clutch fluid..... 96
- Topping up clutch fluid..... 97
- Battery removal..... 97

Checking the electrolyte level.....	99
Charging the battery.....	99
Long periods of inactivity.....	100
Fuses.....	101
Lamps.....	103
Headlight adjustment.....	104
Front direction indicators.....	105
Rear optical unit.....	106
Rear turn indicators.....	106
Number plate light.....	107
Rear-view mirrors.....	107
Front and rear disc brake.....	108
Periods of inactivity.....	110
Cleaning the vehicle.....	111
Transport.....	114
Transmission chain.....	114
Chain backlash check.....	115
Chain backlash adjustment.....	115
Checking wear of chain, front and rear sprockets.....	116
Chain lubrication and cleaning.....	116
<b>TECHNICAL DATA.....</b>	<b>119</b>
Kit equipment.....	128
<b>PROGRAMMED MAINTENANCE.....</b>	<b>129</b>
Scheduled maintenance table.....	130

# DORSODURO 1200 - DORSODURO 1200 ABS - ATC



**Chap. 01**  
**General rules**

## Foreword

### NOTE

**CARRY OUT MAINTENANCE OPERATIONS AT HALF THE INTERVALS SPECIFIED IF THE VEHICLE IS USED IN PARTICULAR RAINY OR DUSTY CONDITIONS, OFF ROAD OR FOR TRACK USE.**

## Carbon monoxide

If you need to keep the engine running in order to perform a procedure, please ensure that you do so in an open or very well ventilated area. Never let the engine run in an enclosed area. If you do work in an enclosed area, make sure to use a smoke-extraction system.

### CAUTION



**EXHAUST EMISSIONS CONTAIN CARBON MONOXIDE, A POISONOUS GAS WHICH CAN CAUSE LOSS OF CONSCIOUSNESS AND EVEN DEATH.**

## Fuel

### CAUTION



**THE FUEL USED TO POWER INTERNAL COMBUSTION ENGINES IS HIGHLY FLAMMABLE AND MAY BE EXPLOSIVE UNDER CERTAIN CONDITIONS. IT IS THEREFORE RECOMMENDED TO CARRY OUT REFUELLING AND MAINTENANCE PROCEDURES IN A VENTILATED AREA WITH THE ENGINE SWITCHED**



**OFF. DO NOT SMOKE DURING REFUELLING OR NEAR FUEL VAPOUR. AVOID ANY CONTACT WITH NAKED FLAME, SPARKS OR OTHER HEAT SOURCES WHICH MAY CAUSE IGNITION OR EXPLOSION.**

**DO NOT ALLOW FUEL TO DISPERSE INTO THE ENVIRONMENT.**

**KEEP OUT OF THE REACH OF CHILDREN.**



**IF THE VEHICLE FALLS OR IS ON A STEEP INCLINE FUEL CAN LEAK.**

## **Hot components**

The engine and the exhaust system components get very hot and remain in this condition for a certain time interval after the engine has been switched off. Before handling these components, make sure that you are wearing insulating gloves or wait until the engine and the exhaust system have cooled down.

## **Coolant**

The coolant contains ethylene glycol which, under certain conditions, can become flammable. When ethylene glycol burns, it produces an invisible flame which can nevertheless cause burns.

### **CAUTION**



**TAKE CARE NOT TO SPILL COOLANT ONTO HOT ENGINE OR EXHAUST SYSTEM COMPONENTS; THE FLUID MAY IGNITE AND BURN WITH AN INVISIBLE**

**FLAME. WHEN CARRYING OUT MAINTENANCE, IT IS ADVISABLE TO WEAR LATEX GLOVES. EVEN THOUGH IT IS TOXIC, COOLANT HAS A SWEET FLAVOUR WHICH MAKES IT VERY ATTRACTIVE TO ANIMALS. NEVER LEAVE THE COOLANT IN OPEN CONTAINERS IN AREAS ACCESSIBLE TO ANIMALS AS THEY MAY DRINK IT.**

**KEEP OUT OF THE REACH OF CHILDREN.**

**DO NOT REMOVE THE RADIATOR CAP WHEN THE ENGINE IS STILL HOT. THE COOLANT IS PRESSURISED AND MAY CAUSE SCALDING.**

## **Used engine oil and gearbox oil**

### **CAUTION**



**IT IS ADVISABLE TO WEAR LATEX GLOVES WHEN SERVICING THE VEHICLE. THE ENGINE OR GEARBOX OIL MAY CAUSE SERIOUS INJURIES TO THE SKIN IF HANDLED FOR PROLONGED PERIODS OF TIME AND ON A REGULAR BASIS.**

**WASH YOUR HANDS CAREFULLY AFTER HANDLING OIL.**

**HAND THE OIL OVER TO OR HAVE IT COLLECTED BY THE NEAREST USED OIL RECYCLING COMPANY OR THE SUPPLIER.**

**DO NOT DISPOSE OF OIL IN THE ENVIRONMENT**

**KEEP OUT OF THE REACH OF CHILDREN.**

## **Brake and clutch fluid**

**Brake and clutch fluid**



**BRAKE AND CLUTCH FLUIDS CAN DAMAGE THE PLASTIC OR RUBBER PAINTED SURFACES. WHEN SERVICING THE BRAKING OR THE CLUTCH SYSTEM PROTECT THESE COMPONENTS WITH A CLEAN CLOTH. ALWAYS WEAR PROTECTIVE GOGGLES WHEN SERVICING THESE SYSTEMS. BRAKE AND CLUTCH FLUIDS ARE EXTREMELY HARMFUL FOR YOUR EYES. IN THE EVENT OF ACCIDENTAL CONTACT WITH THE EYES, RINSE THEM IMMEDIATELY WITH PLENTY OF COLD, CLEAN WATER AND SEEK MEDICAL ADVICE.**

**KEEP OUT OF THE REACH OF CHILDREN.**

### **Battery hydrogen gas and electrolyte**

#### **CAUTION**



**THE BATTERY ELECTROLYTE IS TOXIC, CORROSIVE AND, AS IT CONTAINS SULPHURIC ACID, MAY CAUSE BURNING IF IT COMES INTO CONTACT WITH THE SKIN. WHEN HANDLING BATTERY ELECTROLYTE, WEAR TIGHT-FITTING GLOVES AND PROTECTIVE APPAREL. IN THE EVENT OF SKIN CONTACT WITH THE ELECTROLYTIC FLUID, RINSE WELL WITH PLENTY OF CLEAN WATER. IT IS PARTICULARLY IMPORTANT TO PROTECT YOUR EYES BECAUSE EVEN TINY AMOUNTS OF BATTERY ACID MAY CAUSE BLINDNESS. IN THE EVENT OF CONTACT WITH THE EYES, RINSE WITH PLENTY OF WATER FOR FIFTEEN MINUTES AND CONSULT AN EYE SPECIALIST IMMEDIATELY. IF THE FLUID IS ACCIDENTALLY SWALLOWED, DRINK LARGE QUANTITIES OF WATER OR MILK, FOLLOWED BY MILK OF MAGNESIA OR VEGETABLE OIL AND SEEK MEDICAL ADVICE IMMEDIATELY. THE BATTERY RELEASES EXPLOSIVE GASES; KEEP IT AWAY FROM FLAMES, SPARKS, CIGARETTES OR ANY OTHER HEAT SOURCES. ENSURE ADEQUATE VENTILATION WHEN SERVICING OR RECHARGING THE BATTERY.**

**KEEP OUT OF THE REACH OF CHILDREN.**

**BATTERY LIQUID IS CORROSIVE. DO NOT POUR IT OR SPILL IT, PARTICULARLY ON PLASTIC COMPONENTS. ENSURE THAT THE ELECTROLYTIC ACID IS COMPATIBLE WITH THE BATTERY BEING ACTIVATED.**

## **Stand**



**BEFORE SETTING OFF, MAKE SURE THE STAND HAS BEEN COMPLETELY RETRACTED TO ITS POSITION.**

**DO NOT REST THE RIDER OR PASSENGER WEIGHT ON THE SIDE STAND.**

## **Reporting of defects that affect safety**

Unless otherwise specified in this Use and Maintenance Booklet, do not remove any mechanical or electrical component.

### **CAUTION**

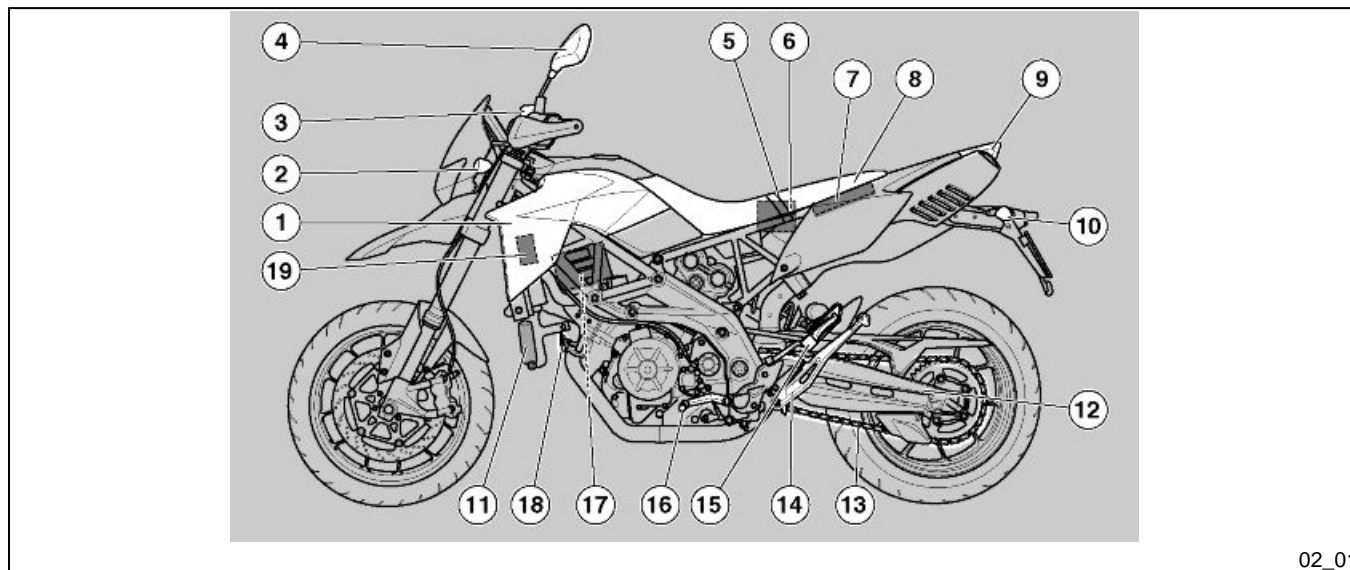
**SOME CONNECTORS IN THE VEHICLE MAY BE ACCIDENTALLY SWAPPED AND MAY COMPROMISE NORMAL VEHICLE OPERATION IF INCORRECTLY INSTALLED.**

# DORSODURO 1200 - DORSODURO 1200 ABS - ATC

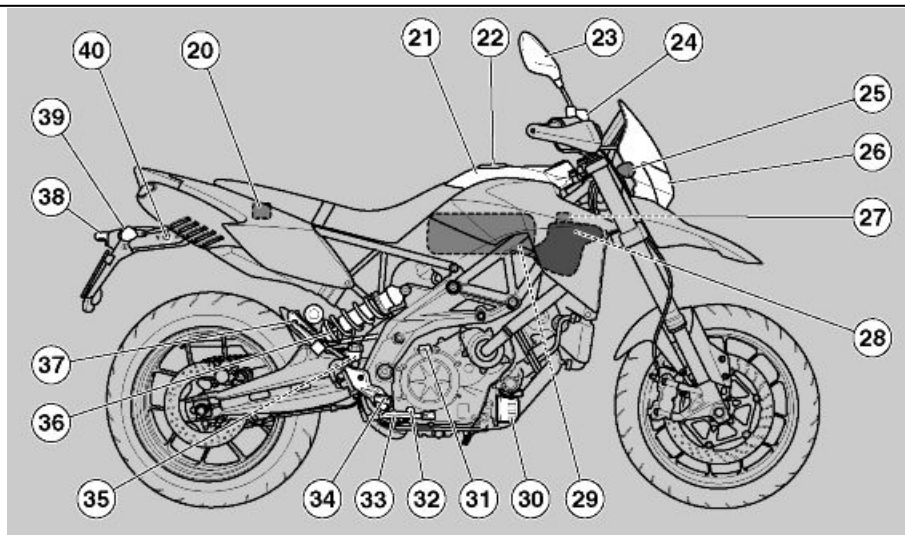


**Chap. 02  
Vehicle**

Arrangement of the main components (02\_01, 02\_02, 02\_03, 02\_04)



02\_01



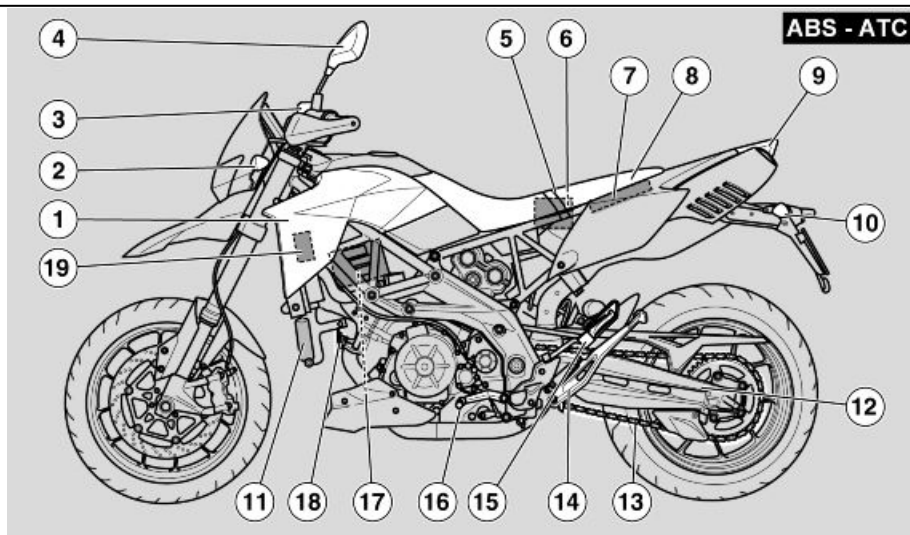
02\_02

**Key - version without ABS:**

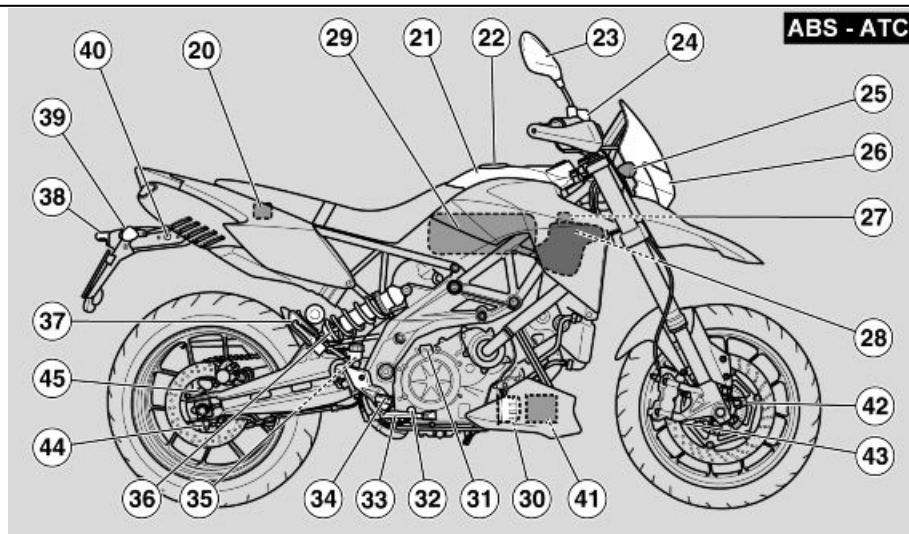
1. Left side fairing
2. Front left turn indicator
3. Clutch fluid reservoir
4. Left rear-view mirror
5. Passenger seat strap
6. Battery
7. Glove-box / toolkit
8. Saddle
9. Taillight
10. Rear left turn indicator
11. Oil radiator
12. Swingarm
13. Drive chain

14. Side stand
15. Left hand passenger footrest
16. Gear lever
17. Control unit
18. Horn
19. Auxiliary fuses
20. Main fuses
21. Fuel tank
22. Fuel tank cap
23. Right rear-view mirror
24. Front brake system fluid reservoir
25. Front right turn indicator
26. Headlamp
27. Expansion tank cap
28. Expansion tank
29. Air filter box / air filter
30. Oil filter
31. Engine oil plug
32. Engine oil level
33. Rear brake lever
34. Right hand rider footrest
35. Rear brake system fluid reservoir
36. Rear shock absorber
37. Right hand passenger footrest
38. License plate light
39. Rear right turn indicator
40. Seat lock





02\_03



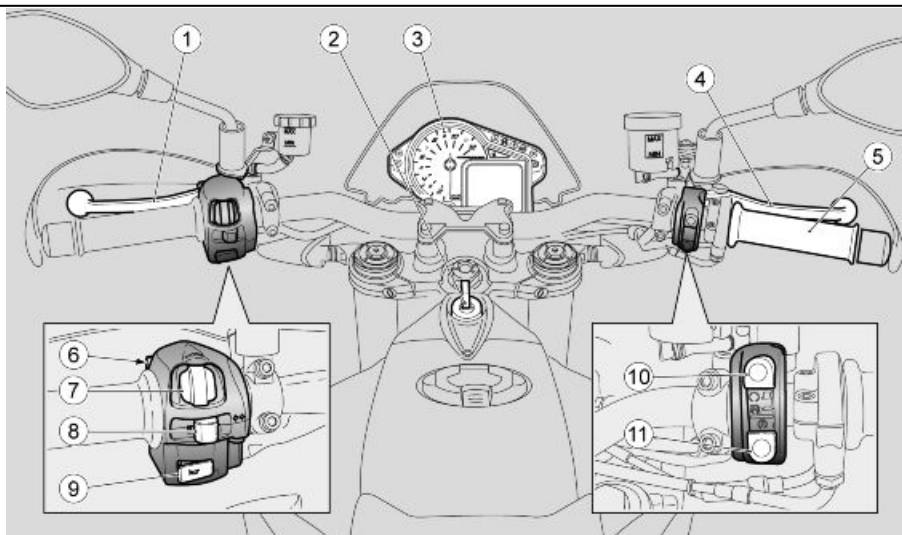
02\_04

**Key - version with ABS - ATC:**

1. Left side fairing
2. Front left turn indicator
3. Clutch fluid reservoir
4. Left rear-view mirror
5. Passenger seat strap
6. Battery
7. Glove-box / toolkit
8. Saddle
9. Taillight
10. Rear left turn indicator
11. Oil radiator
12. Swingarm
13. Drive chain

14. Side stand
15. Left hand passenger footrest
16. Gear lever
17. Control unit
18. Horn
19. Auxiliary fuses
20. Main fuses
21. Fuel tank
22. Fuel tank cap
23. Right rear-view mirror
24. Front brake system fluid reservoir
25. Front right turn indicator
26. Headlamp
27. Expansion tank cap
28. Expansion tank
29. Air filter box / air filter
30. Oil filter
31. Engine oil plug
32. Engine oil level
33. Rear brake lever
34. Right hand rider footrest
35. Rear brake system fluid reservoir
36. Rear shock absorber
37. Right hand passenger footrest
38. License plate light
39. Rear right turn indicator
40. Seat lock
41. ABS control unit
42. Front ABS sensor
43. Front tone wheel
44. Rear ABS sensor
45. Rear tone wheel

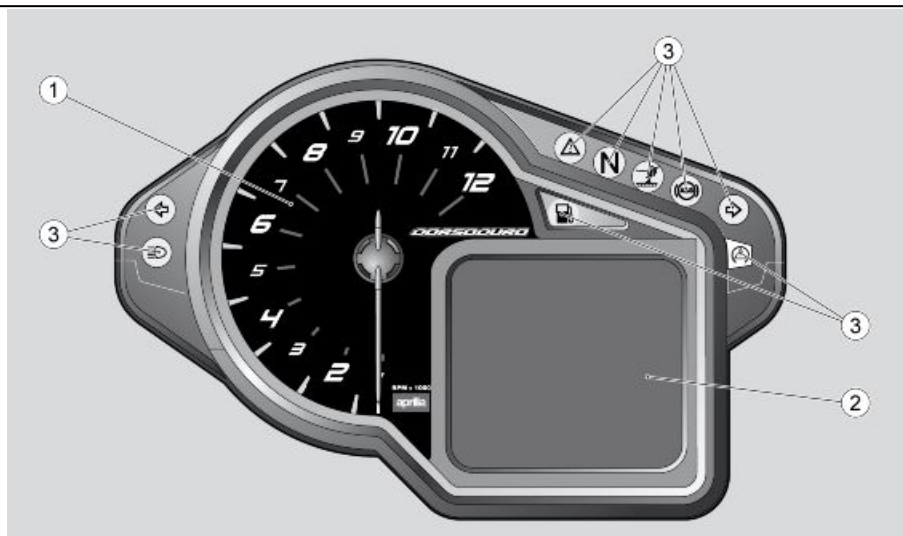
## **Dashboard (02\_05)**



02\_05

**Instrument panel / controls location key**

1. Clutch control lever
2. Ignition switch /steering lock
3. Instrument panel
4. Front brake lever
5. Throttle grip
6. High beam flashing switch
7. MODE Control
8. Turn indicator control
9. Horn button
10. Engine stop button
11. Start-up button/mapping selection



02\_06

### Instrument panel (02\_06)

**key:**

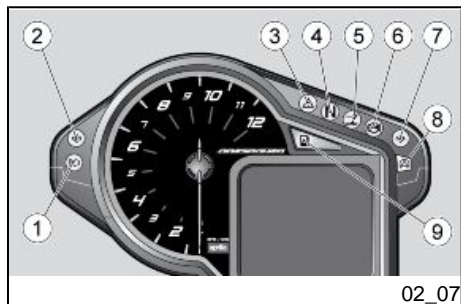
1. Rpm indicator
2. Multifunctional digital display
3. Warning lights

The instrument panel has an immobilizer system which prevents start-up in case the system does not identify a key which has been stored before.

The vehicle is supplied with two keys already programmed. The instrument panel accepts a maximum of four keys at the same time: contact an Official **Aprilia** Dealer to enable these keys or to disable a key that has been lost. When the vehicle is delivered and approximately ten seconds after the key is set to ON, the instrument panel requests a personal five-digit code to be entered. This request is no longer displayed once the personal code is entered. For code entering procedure, see the CODE MODIFICATION section

**It is important to remember the personal code because:**

- **the vehicle can be started if the immobilizer system is faulty**
- **the instrument panel need not be replaced should the ignition switch be changed**
- **new keys can be programmed**



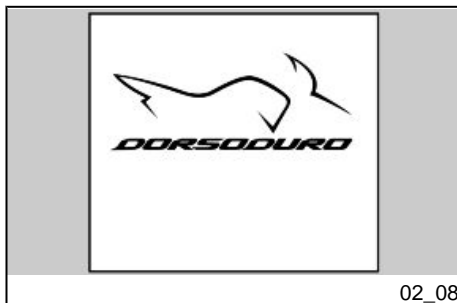
### Light unit (02\_07)

key:

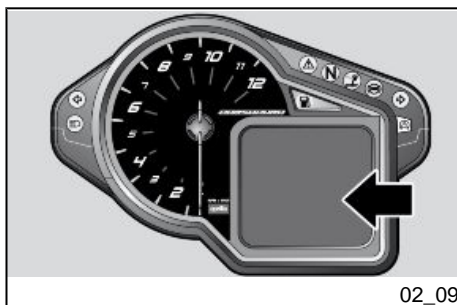
1. Blue high beam warning light
2. Green left turn indicator warning light
3. General warning light, red
4. Gear in neutral warning light, green
5. Side stand lowered warning light, amber yellow
6. ABS warning light, amber yellow (where available)
7. Right turn indicator warning light, green
8. ATC (Aprilia Traction Control) warning light, amber yellow (where available)
9. Low fuel warning light, amber yellow

**Digital lcd display (02\_08, 02\_09, 02\_10, 02\_11, 02\_12, 02\_13)**

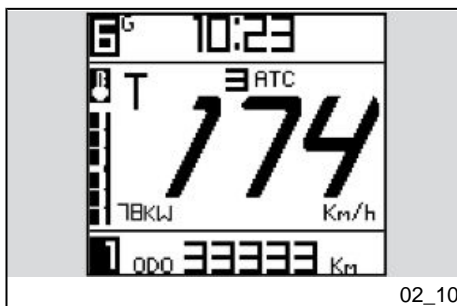
- By turning the ignition key to 'KEY ON', the following indicators on the instrument panel are lit for two seconds:
  - The logo
  - All warning lights
  - The rpm indicator pointer moves and then goes back to its original position.



02\_08



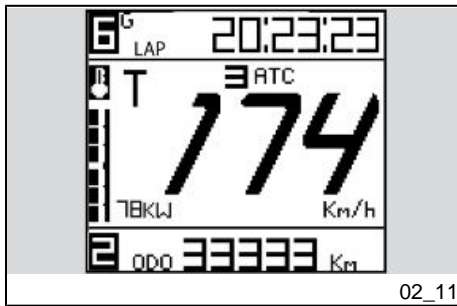
02\_09



02\_10

**TRIP 1/TRIP 2 MODE**

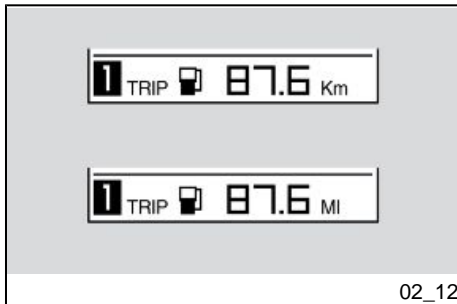
- **The following functions are shown the top of the display:**
  - Clock (displayable in the 24H and 12H mode without AM/PM indication) or chronometer (selectable from the menu) gear engaged.
- **The following functions are shown in the centre of the display:**
  - map selected (top left);
  - ATC level (Aprilia Traction Control) (Where available)
  - speed (speedometer)
  - Engine temperature bar;



- any indication about mapping in the ECU (bottom left).

- **The following functions are shown at the bottom of the display:**

- total odometer;
- Trip journal;
- ABS (where available)
- ATC (Aprilia Traction Control) (Where available)
- active alarms.

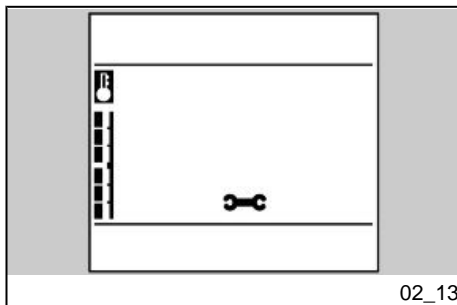


2 Km (1.24 mi) after the low fuel warning light illuminates, the distance travelled in reserve is shown on the digital display.

When active, it disappears after pressing one of the joystick controls to reappear after 60 seconds.

If the vehicle is using the fuel reserve, the warning light turns on 60 seconds after "KEY ON".

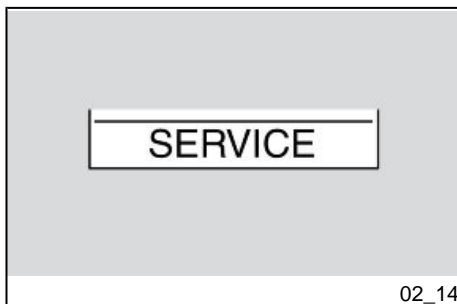




When a maintenance interval threshold is exceeded, an icon with a spanner is shown. Scheduled maintenance operations carried out only by an authorised Aprilia dealer or workshop can deactivate this indication.

The "spanner" icon flashes for five seconds when the key is turned to "KEY ON" when there is less than 300 Km (186 mi) remaining before the next scheduled maintenance interval.

With the key set to "KEY OFF" the general alarm warning light flashes to indicate activation of the locking system. To reduce battery consumption the light stops flashing after about 50 hours.



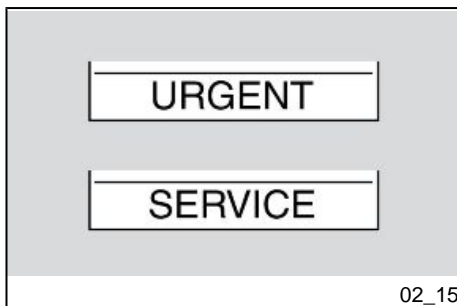
### Alarms (02\_14, 02\_15, 02\_16, 02\_17, 02\_18, 02\_19)

In case of failure, a different icon is displayed according to the cause at the bottom of the display.

Take your vehicle as soon as possible to an Official **Aprilia** Dealer.

#### **SERVICE ALARM**

In case of failure found in the instrument panel or in the electronic control unit, the instrument panel signals the failure by displaying the word SERVICE and the red general warning light comes on.

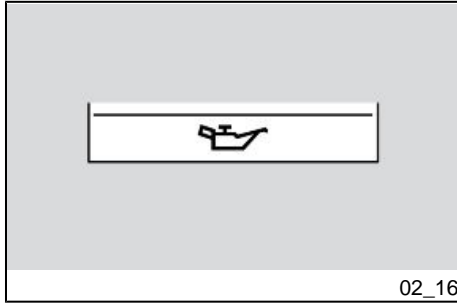


If there is an immobilizer failure at ignition, the instrument panel requests you to enter a user code. If the code is entered correctly, the instrument panel signals the failure by displaying the word SERVICE and the red general warning light comes on.

#### **URGENT SERVICE ALARM**

A serious failure is signalled by a fast flashing (two flashes per second) of the general warning light and by the URGENT and SERVICE words alternately being shown on the digital display. Take your vehicle as soon as possible to an Official **Aprilia** Dealer. In these cases, the control unit activates a safety procedure that limits the vehicle performance so that the rider is able to reach an Official **Aprilia** Dealer at low speed. According to the type of failure, performance can be limited in two ways: a) by reducing

the maximum torque produced; b) by keeping the engine at idle speed but slightly accelerated (during this operation, the throttle control is disabled).



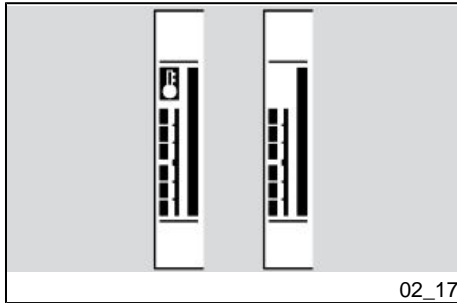
#### Oil failure

In case of failing oil pressure or oil pressure sensor failure, the bulb and the red general warning light turn on the instrument panel.

#### CAUTION

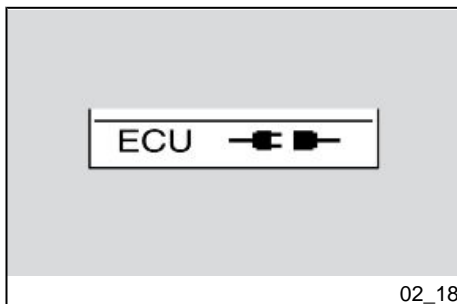
**IF THIS APPEARS WHEN THE KEY IS INSERTED, A SENSOR ANOMALY IS INDICATED; THERE IS NO IMMEDIATE DANGER FOR THE ENGINE.**

**IF IT APPEARS AFTER THE ENGINE HAS BEEN SWITCHED ON, SWITCH IT OFF STRAIGHT AWAY AND, WITH ROAD ASSISTANCE SERVICE, TAKE THE VEHICLE TO AN Official Aprilia Dealer.**



#### Engine overheating alarm

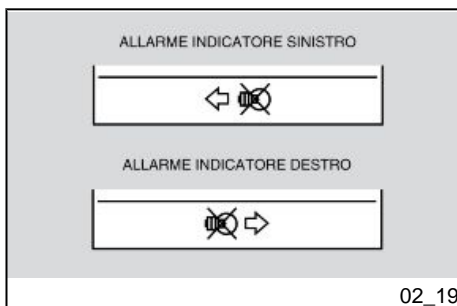
The engine overheating alarm is activated when the temperature is higher than or equal to 110 °C (230 °F). The red general warning light turns on and the thermometer icon flashes on the display to signal this condition.



02\_18

### Electronic control unit disconnected alarm

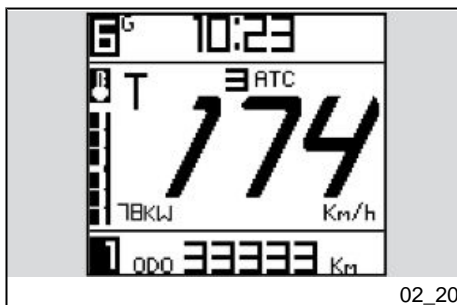
In case no connection is detected, the disconnection icon is displayed on the instrument panel and the red general warning light turns on to signal this condition.



02\_19

### Turn indicator malfunction

When the instrument panel detects a failing turn indicator, the turn indicator warning light flashes twice as fast and the problem is signalled on the digital display.



02\_20

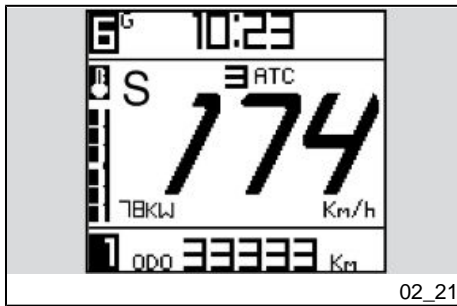
### Mapping selection (02\_20, 02\_21, 02\_22)

The engine control unit foresees 3 different "mapping" variants to manage the electronic throttle grip, which are displayed as seen in the upper left section of the instrument panel digital display:

- **T** is the **TOURING** mapping
- **S** is the **SPORT** mapping
- **R** is the **RAIN** mapping

The **TOURING** mode has been thought for smooth tourist riding.

In the **SPORT** mode you get more acceleration; this variant has been thought for a sporting use of the vehicle.



#### CAUTION

**ONLY EXPERT RIDERS, RIDING ON ROADS WITH GOOD GRIP ARE ADVISED TO USE THIS MODE. IT IS NOT RECOMMENDED FOR WET SURFACES AND/OR ROADS WITH LOW GRIP.**

The **RAIN** mode has been thought for riding on wet surfaces or roads with low grip. The system reduces the maximum torque supplied by the engine and smoothly delivers it so as to prevent loss of grip. In this mode, the vehicle performance is limited, and therefore, the maximum speed cannot be reached.

**THIS IS NOT AN ANTI-SKID DEVICE. BE EXTREMELY CAUTIOUS WHEN RIDING ON ROADS WITH LOW GRIP.**

Push the starter button to go through the different mappings. Five seconds after the engine is started, this button can be used as a mapping selection button.

**CAUTION**

**THE MAPPING SELECTION PROCESS IS ACTIVE EVEN IF THE VEHICLE IS IN MOTION, BUT ONLY IF THE ENGINE IS RUNNING AND THE THROTTLE CONTROL UNTWISTED.**

To change mappings, proceed as follows:

- press the button once and the symbol for the mapping currently being used is shown "in negative" on the display
- press the button a second time, and within 1.5 seconds from the first pressing, the next mapping is selected and highlighted "in negative" on the display. If more than 1.5 seconds elapse and the button is not pressed again (the next mapping is otherwise selected) and without twisting the throttle control, the new mapping is highlighted "in positive" on the display. This means that the new mapping is applied for all practical purposes.

**CAUTION**

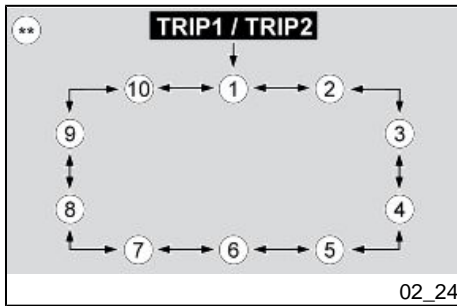
**IN CASE THE THROTTLE GRIP IS TWISTED WHEN THE NEW MAPPING CHOSEN IS HIGHLIGHTED "IN NEGATIVE" ON THE DISPLAY, HENCE STILL BEING ACCEPTED BY THE ECU, THE NEW MAPPING SELECTED STARTS FLASHING "IN POSITIVE" ON THE DISPLAY, BUT WILL NOT BE ACTUALLY APPLIED UNLESS THE THROTTLE CONTROL IS RELEASED.**

### **Control buttons (02\_23, 02\_24, 02\_25, 02\_26, 02\_27, 02\_28, 02\_29)**

#### **Trip journal 1 and 2**

Two trip journals are available (\*).





Press and hold down the MODE control to the left to select the TRIP JOURNAL 1; icon "1" on the DIGITAL DISPLAY turns on.

Press and hold down the MODE control to the right to select the TRIP JOURNAL 2; icon "2" on the DIGITAL DISPLAY turns on.

In both journals, each time the MODE control is pressed briefly to the right or left, the following information is displayed in sequence (\*\*):

ODOMETER (1)

TRIP ODOMETER (2)

TRAVELLING TIME (3)

MAXIMUM SPEED (4)

AVERAGE SPEED (5)

AVERAGE FUEL CONSUMPTION (6)

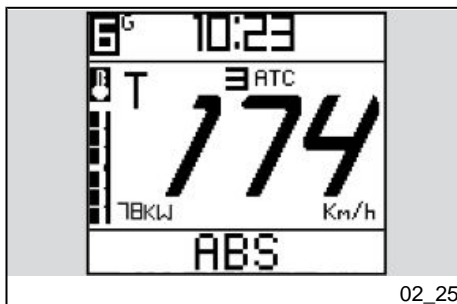
INSTANT FUEL CONSUMPTION (7)

MENU (only with the vehicle at a standstill) (8)

ABS (only with the vehicle at a standstill) (Where available) (9)

ATC (Aprilia Traction Control) (Only with the vehicle at a standstill) (Where available) (10)

With the following options: TRIP ODOMETER, TRAVELLING TIME, MAXIMUM SPEED, MEAN SPEED, AVERAGE FUEL CONSUMPTION, press and hold down the central key to reset all the indications stored in the active TRIP JOURNAL.



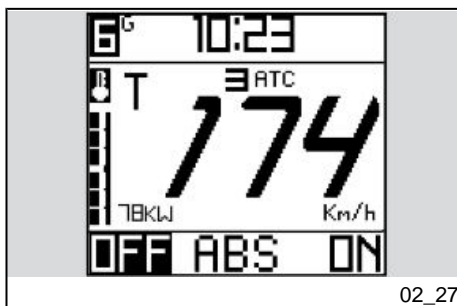
### ABS (where available)

Push the MODE control briefly to the left or right to scroll through the TRIP1 or TRIP2 trip journal and view the ABS option.

Press the centre of the MODE control to access the ABS function.



By moving the selector to the right - pressing it briefly - the ABS system turns on and the warning light starts blinking.



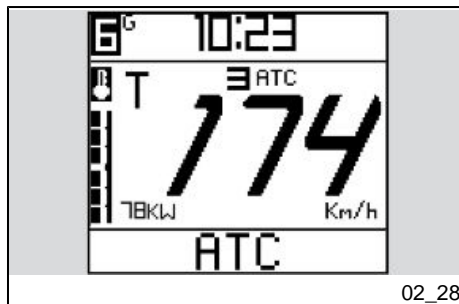
By moving the selector to the left - pressing it briefly - the ABS system turns off and the warning light remains on with a steady light.

Once the ABS system is enabled or disabled, the digital display automatically returns to the ABS function.

When the bike is in motion, the instrument panel automatically exits the ABS function.

### NOTE

**AT KEY ON, IF THE SYSTEM IS FUNCTIONING CORRECTLY, THE ABS INDICATOR LIGHT WILL FLASH, AND ONCE A VEHICLE SPEED OF 5 Km/h - 3.1 mph IS EXCEEDED, THE SYSTEM WILL BE ACTIVE.**



## NOTE

**WHEN THE BIKE'S PANEL IS OFF AND WHEN TURNING IT ON THE NEXT TIME THE ABS SYSTEM IS STILL ACTIVE, REGARDLESS OF WHAT WAS SET PREVIOUSLY.**

### ATC (Aprilia Traction Control) (Where available)

Push the MODE control briefly to the left or right to scroll through the TRIP1 or TRIP2 trip journal and view the ATC option.

Press the centre of the MODE control to access the ATC function.

By moving the selector to the right, holding it down, the system turns on and the value "1" (minimum intervention) appears on the display.

ATC warning light will blink.

By moving the selector to the right, pressing it briefly, the intervention level increases up to a maximum of "3" (Maximum intervention).

## NOTE

**EVERY TIME THE SET VALUE IS MODIFIED, THE NUMERIC SYMBOL IS DISPLAYED IN NEGATIVE (BLINKS) FOR 2 SECONDS BEFORE BEING CONFIRMED**

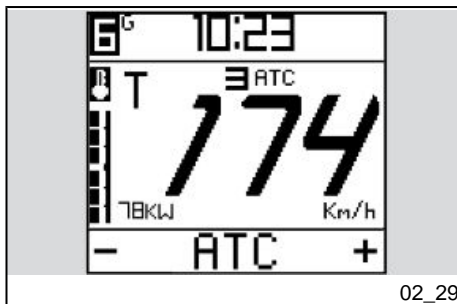
## CAUTION

**TO BECOME FAMILIAR WITH THE ATC SYSTEM, IT IS ADVISABLE TO SET THE VALUE "3" TO THEN IDENTIFY THE PREFERRED SETTING FOR THE RIDING STYLE AND FOR THE ROAD AND ENVIRONMENTAL CONDITIONS WHICH MAY APPEAR.**



**LEVEL "1" IS SUITABLE FOR EXPERT USERS AND IN OPTIMUM ROAD SURFACE CONDITIONS.**

**LEVEL "2" IS AN INTERMEDIATE SETTING BETWEEN LEVEL "1" AND LEVEL "3".**



02\_29

To deactivate the system, from value "1", turn the selector to the left, holding it down, until the value "-" appears.

ATC warning light will remain on with a steady light.

To exit the ATC function, press the selector briefly or move off from a standstill.

#### **NOTE**

**WHEN THE BATTERY IS FIRST CONNECTED, THE ATC WARNING LIGHT REMAINS ON WITH A STEADY LIGHT (NOT ACTIVE SYSTEM)**

#### **NOTE**

**WHEN THE VEHICLE PANEL IS OFF AND WHEN TURNING IT ON THE NEXT TIME, THE ATC SYSTEM KEEPS THE SETTINGS SELECTED PREVIOUSLY.**

### **CHRONOMETER**

To use the chronometer, select the CHRONOMETER function from the MENU of the instrument panel advanced functions.

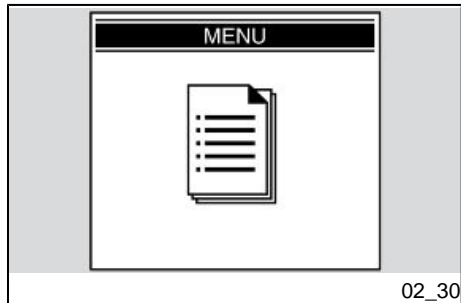
The chronometer is shown at the top of the digital display instead of the gear, clock and ambient temperature indicators.

With the vehicle in motion the chronometer functioning is controlled by means of the MODE control central button.

Press the central button briefly to start the chronometer. Timekeeping starts when the button is pressed. If the button is pressed again within 10 seconds after starting timekeeping, the chronometer is reset. After that time, and if the button is pressed again, the data is stored and the next timekeeping begins.

Timekeeping is cancelled by pressing and holding down the central button, or when speed goes back to zero; the display shows the last timekeeping. Timekeeping starts again following the steps described above.

After storing 40 times, this function is over. A new series of timekeeping can be started again only after deleting previous times stored by means of the MENU of the instrument panel advanced functions.



## Advanced functions (02\_30, 02\_31, 02\_32, 02\_33, 02\_34, 02\_35, 02\_36, 02\_37)

### MENU

The configuration menu is accessible with the vehicle at a standstill by pressing and holding the MODE button, and contains the following functions:

- EXIT
- SETTINGS
- CHRONOMETER
- CALIBRATION (Where available)
- DIAGNOSIS
- LANGUAGES.



### SETTINGS

The SETTINGS menu consists of the following options:

- EXIT
- TIME ADJUSTMENT
- GEAR SHIFT
- BACKLIGHTING
- CODE CHANGE
- CODE RESET
- °C / °F
- 12/24 h

The functions of the settings menu are indicated in the following sections.

Once the operation is finished, the instrument panel goes back to the main menu.

### **TIME ADJUSTMENT**

The clock can be programmed with this option. The message "CLOCK ADJUSTMENT" is shown on the main display.

The minutes indicator is no longer displayed when this function is activated; only the hours indicator is shown. Each time the MODE selector is pressed to the right, the hour value increases; likewise, each time the MODE selector is pressed to the left, the hour value decreases. Press the MODE selector central part to store the set value and to shift to minute adjustment.

The minute indicator is no longer displayed when this function is activated; only the hour indicator is shown. Each time the MODE selector is pressed to the right, the minute value increases; likewise, each time the MODE selector is pressed to the left the minute value decreases.

Press the MODE selector central part to store the set value and to exit the clock adjustment function.



### GEAR SHIFT THRESHOLD

The gear shift threshold can be set in this mode. The main screen shows the message "GEAR SHIFT THRESHOLD".

Each time the MODE selector is pressed to the right, the threshold value increases by 100 RPM; contrariwise, each time the MODE selector is pressed to the left, the threshold value decreases by 100 RPM.

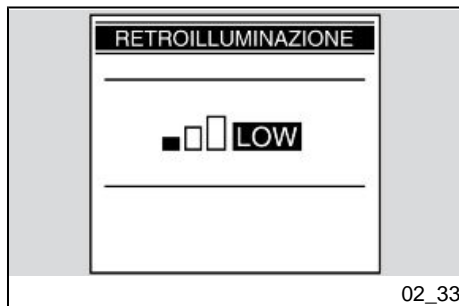
After reaching either the highest or lowest limit, the next time the selector is pressed will produce no effect.

The procedure ends when the MODE selector is pressed at the central position, which stores the set value, the pointer goes back to zero and the instrument panel goes back to the configuration menu.

When the battery is first activated, the instrument panel is set to the run-in rev value. Afterwards, the last set value is displayed:

- RUN-IN REVOLUTIONS: 6500 rpm
- MINIMUM REVOLUTIONS: 5000 rpm
- MAXIMUM REVOLUTIONS: 12000 rpm

If the set threshold value is exceeded, the warning light on the instrument panel starts to flash. It turns off when the value goes back below the threshold limit.



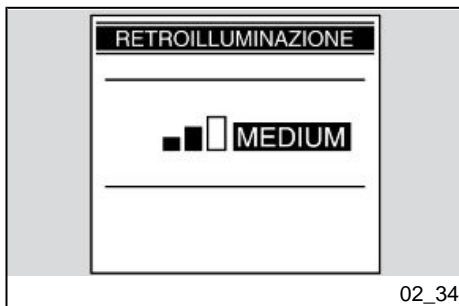
### BACKLIGHTING BRIGHTNESS

This function adjusts the backlighting brightness to three levels. Each time the MODE selector is pressed to the right or left, the following icons are shown:

- LOW
- MEAN
- HIGH

Once the operation is finished, when the MODE selector is pressed at central position, the instrument panel shows the SETTINGS menu.

When the battery is detached, the display is configured with the maximum level of brightness.



### CODE CHANGE

This function is used to modify an old code. Once you have entered this function, the following message is displayed:

"ENTER OLD CODE"

After recognising the old code, the new code is requested and the display shows the following message:

"ENTER NEW CODE"

Once the operation is finished, the display shows the DIAGNOSIS menu. If the code has been used, this operation is not allowed.

Once the operation is finished, the instrument panel shows the SETTINGS menu.

If it is the first time a code is stored, only the new code is requested.

### **CODE RESET**

This function is used to set a new code when the old one is not available; in this case, at least two keys will have to be inserted in the ignition lock. After the first key has been inserted, the second one is requested with the following message:

"INSERT KEY II"

In between keys, the instrument panel remains lit; if the key is not inserted within 20 seconds, the operation finishes. After recognising the second key, the insertion of the new code is required with the message:

"ENTER NEW CODE"

Once the operation is finished, the display shows the DIAGNOSIS menu. If the code has been used, this operation is not allowed.

Once the operation is finished, the instrument panel shows the SETTINGS menu.

### **12H / 24H**

Select the 12H / 24H option from the SETTINGS menu for this function.

This menu selects the clock display mode as 12h or 24h.

### **CHRONOMETER**

Select the CHRONOMETER option from the configuration menu to access the chronometer function. When the CHRONOMETER function is selected the screen page shows the following options:

- EXIT

- CLOCK/CHRONOMETER
- VIEW TIMES
- DELETE TIMES

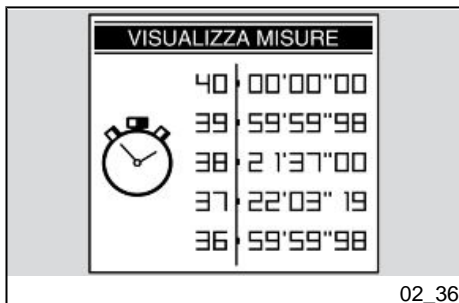
### CLOCK/CHRONOMETER

Select this option to display the screen that allows to select which function should be shown at the top of the display- clock or chronometer.

The instrument panel keeps the chosen configuration even after the key is extracted / inserted.

#### View times

This option shows the stored chronometer times. Press the MODE selector for a couple of seconds to the right or left to scroll the time screens; hold it down to display the CHRONOMETER menu. If the battery is removed, the stored times are lost.



#### Delete times

This option deletes the stored chronometer times. A deletion confirmation is requested. Once the operation is finished, the display goes back to the chronometer menu.



### **CALIBRATION (Where available)**

Select the CALIBRATION function from the configuration menu to access the CALIBRATION function.

When the CALIBRATION function is selected (with vehicle at a standstill), a screen is shown with the following message at the bottom of the display:

CALIBRATION

To calibrate the ATC (Aprilia Traction Control) system, ride for approximately 10 seconds in a straight line on a flat section of road in second gear and at a speed of 30 +/- 2 Km/h (18.64 +/- 1.24 mph), until the message CALIBRATING is no longer shown on the display.

#### **NOTE**

**ONCE THE WORD CALIBRATION DISAPPEARS FROM THE DISPLAY, TO COMPLETE THE CALIBRATION PROCEDURE, STOP THE VEHICLE AND SHUT OFF THE PANEL FOR AT LEAST 30 SECONDS.**

**THIS ALLOWS THE CALIBRATION TO BE STORED IN THE MEMORY.**

#### **NOTE**

**CARRY OUT THE CALIBRATION EACH TIME TYRES TYPE IS CHANGED.**

#### **NOTE**

**TURN THE IGNITION SWITCH OFF TO ABORT THE CALIBRATION PROCEDURE.**

**DURING CALIBRATION, ATC IS AUTOMATICALLY DEACTIVATED (IF PREVIOUSLY ACTIVATED).**

#### **CAUTION**

**WHEN THE MOTORCYCLE IS IN RESERVE, IT IS NOT POSSIBLE TO CARRY OUT THE CALIBRATION PROCEDURE BECAUSE, DURING THIS PHASE, ON THE INSTRUMENT PANEL, THE MESSAGE CALIBRATING IS REPLACED BY THE INDICATION OF THE KILOMETRES TRAVELLED SINCE ENTERING RESERVE STATE**



## DIAGNOSIS

Open the configuration menu to display the DIAGNOSIS option.

This menu interfaces with the systems present on the vehicle and diagnoses them. To enable this menu, enter an access code available only from official Aprilia dealers.

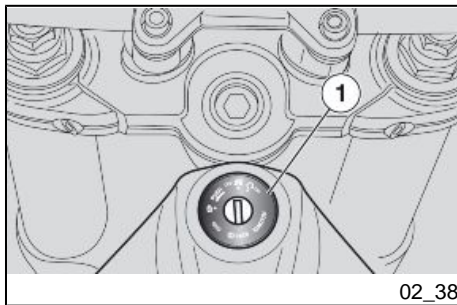
## LANGUAGES

Open the configuration menu to access the LANGUAGES function. Select the LANGUAGES option to choose the interface language.

The options are:

- ITALIANO
- ENGLISH
- FRANÇAIS
- DEUTSCH
- ESPAÑOL

Once the operation is finished, the display goes back to the LANGUAGES menu.



02\_38

## Ignition switch (02\_38)

The ignition switch (1) is located at the front of the fuel reservoir.

The vehicle is supplied with two keys (one is the spare key).

The lights go off when the ignition switch is set to «OFF».

### NOTE

**THE KEY ACTIVATES THE IGNITION SWITCH AND OPERATES THE STEERING LOCK.**

### NOTE

**THE LIGHTS TURN ON AUTOMATICALLY UPON ENGINE START-UP.**

**LOCK:** The steering is locked. It is not possible to start the engine or switch on the lights. The key can be extracted

**OFF:** The engine and lights cannot be set to work. The key can be extracted.

**ON:** the engine may be started. The key cannot be removed

## Locking the steering wheel

### To lock the steering:

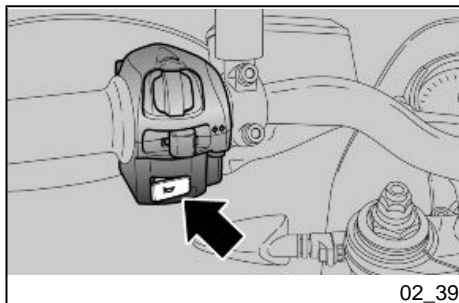
- Turn the handlebar completely to the left.
- Turn the key to «OFF».
- Push in the key and turn it anticlockwise (to the left), steer the handlebar slowly until the key is set to «LOCK».
- Remove the key.

**CAUTION**

**TO AVOID LOSING CONTROL OF THE VEHICLE, NEVER TURN THE KEY TO "LOCK" WHILE RIDING.**

**Horn button (02\_39)**

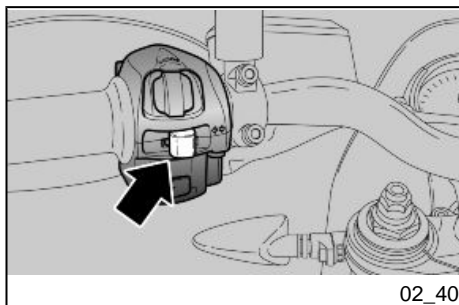
Press it to activate the horn.

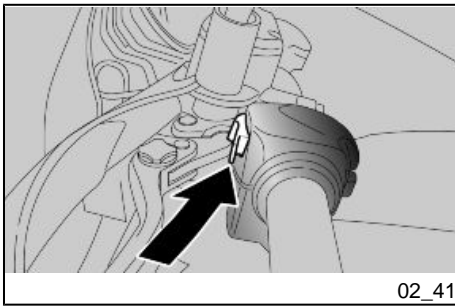
**Switch direction indicators (02\_40)**

Move the switch to the left, to indicate a left turn; move the switch to the right to indicate a right turn. Pressing the switch deactivates the turn indicator.

**CAUTION**

**IF THE WARNING LIGHT WITH ARROWS FLASHES QUICKLY, IT MEANS THAT ONE OR BOTH TURN SIGNALS LIGHT BULBS ARE BURNT OUT.**

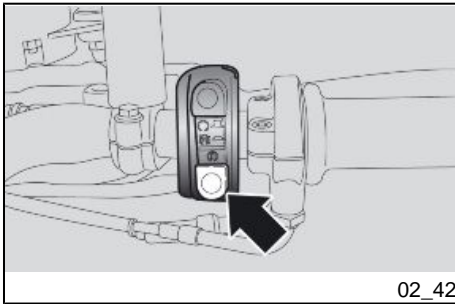




### Passing button (02\_41)

Uses the high beam flash in case of danger or emergency.

Releasing the switch deactivates the high beam flash.

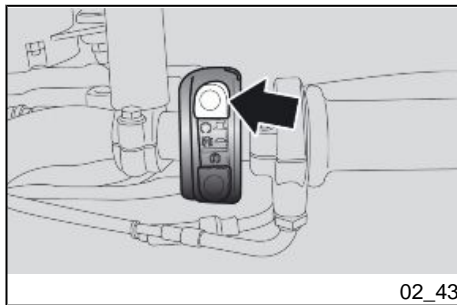


### Start-up button (02\_42)

Press the button and the starter motor spins the engine.

#### CAUTION

**FIVE SECONDS AFTER THE ENGINE IS STARTED, THIS BUTTON CAN BE USED AS "MAPPING SELECTION" BUTTON.**



02\_43

## Engine stop switch (02\_43)

It acts as an engine cut-off or emergency stop switch.

Press this switch to stop the engine.

## System ABS

### WHERE CONTEMPLATED

The ABS system is a device that prevents wheel locking in case of an emergency braking, thus increasing vehicle stability when braking, compared with a conventional braking system.

The ABS system enhances control over the vehicle, taking into consideration never to exceed the physical limits of vehicle grip on the road. The rider is fully responsible for riding at a suitable speed based on weather and road conditions, always leaving an appropriate safety margin.

Under no circumstances can the ABS system compensate for the rider's misjudgment or improper use of brakes.

### NOTE

**WHEN THE ABS SYSTEM STARTS WORKING, A VIBRATION IS FELT ON THE BRAKE LEVER.**



**THE ANTILOCK BRAKING SYSTEM OF THE WHEEL DOES NOT PREVENT FALLS WHILE CORNERING.**

**AN EMERGENCY BRAKING WITH THE VEHICLE INCLINED, HANDLEBAR TURNED, ON UNEVEN OR SLIPPERY ROADS, OR WITH POOR GRIP, CREATES A LACK OF STABILITY DIFFICULT TO HANDLE. RIDE CAREFULLY AND SENSIBLY AND ALWAYS BRAKE GRADUALLY.**

**DO NOT SPEED RECKLESSLY. THE VEHICLE GRIP ON THE ROAD IS SUBJECT TO LAWS OF PHYSICS WHICH NOT EVEN THE ABS SYSTEM CAN ELIMINATE.**

During the vehicle start-up, after the instrument panel initial check, the ABS warning light stops flashing when the speed is under 5 km/h (3.1 mph).

If the ABS warning light continues flashing or is permanently on, a failure has been detected and the ABS has been automatically deactivated.

In this case carry out the following operations:

- stop the vehicle;
- key OFF-ON;
- ride over 5 km/h (3.1 mph): the ABS warning light must be turned off;
- the ABS system is working.

If the ABS disabled indication remains:

#### **NOTE**

**SHOULD THIS OCCUR, CONTACT AN aprilia Official Dealer.**

**NOTE**

THE ABS SYSTEM HAS BEEN DESIGNED AND DEVELOPED, CONSISTENTLY WITH THE REST OF THE VEHICLE, TO BE USED ON TARMAK ROADS AND IT IS NOT SUITABLE FOR OFF-ROAD USE.

IF THE VEHICLE IS USED ON UNSURFACED AND/OR SPECIFICALLY ROUGH ROADS, THE ABS SYSTEM MAY GET DISABLED AUTOMATICALLY; IN ANY CASE, THE BRAKING SYSTEM WORKS PERFECTLY WELL AS A TRADITIONAL NON-ABS BRAKING SYSTEM AND PROVIDES A STANDARD STOP CAPACITY.

IN ORDER TO REACTIVATE THE SYSTEM JUST SHUT OFF AND START THE VEHICLE UP AGAIN AND RIDE OVER 5 km/h (3.1 mph).



THE ABS SYSTEM ACTS ON BOTH THE FRONT AND REAR WHEELS BY OBTAINING INFORMATION FROM THE ROTATION/ LOCKING TONE WHEELS. ALWAYS CHECK THAT THE TONE WHEEL IS CLEAN, AND REGULARLY CHECK THAT THE DISTANCE TO THE SENSOR IS CONSTANT ON ALL 360 GRADES. SHOULD THE WHEELS BE REMOVED AND REFITTED, IT IS VERY IMPORTANT TO CHECK THAT THE DISTANCE BETWEEN TONE WHEEL AND SENSOR IS THE ONE SPECIFIED. FOR CHECKING AND ADJUSTMENT, CONTACT AN Authorised APRILIA Workshop.



IN THE CASE OF A MOTORCYCLE WITH THE ABS SYSTEM, BRAKE PADS WITH FRICTION MATERIALS THAT ARE NOT TYPE APPROVED WILL JEOPARDISE BRAKING, DRASTICALLY REDUCING RIDING SAFETY.

**NOTE**

THE SYSTEM SENSORS WITH A SIGNIFICANT ACCURACY IN READING THE TONE WHEELS CAN GENERATE, WITH THE MOTORCYCLE AT A STANDSTILL

**AND ENGINE ON, A SPEED INDICATION OF km / h (mi) IN THE DIGITAL DISPLAY.**

**SUCH BEHAVIOUR IS TO BE CONSIDERED NORMAL AND DOES NOT CREATE MALFUNCTIONS IN THE SYSTEM.**

### **Characteristic**

**Distance between tone wheel and front sensor**

0.3 - 2.00 mm (0.012 - 0.079 in)

**Distance between tone wheel and rear sensor**

0.3 - 2.00 mm (0.012 - 0.079 in)

## **System ATC (Aprilia Traction Control)**

### **WHERE CONTEMPLATED**

ATC is a system that monitors and, if necessary, limits rear wheelspin under acceleration to increase vehicle stability.

While ATC improves vehicle control, it does not allow the physical handling limits of the vehicle to be exceeded. The rider is fully responsible for riding at a suitable speed based on weather and road conditions, always leaving an appropriate safety margin.

Under no circumstances can ATC compensate for any rider error or improper use of the throttle.



**THE TRACTION CONTROL SYSTEM CANNOT PREVENT FALLS WHILE CORNERING.**



**ACCELERATING SUDDENLY WHILE THE VEHICLE IS INCLINED OR WITH THE HANDLEBARS TURNED WILL PUT THE VEHICLE IN AN UNSTABLE STATE THAT IS EXTREMELY DIFFICULT TO RECTIFY.**

**DO NOT SPEED RECKLESSLY. LIMITS OF GRIP ARE DETERMINED BY LAWS OF PHYSICS WHICH EVEN THE ATC SYSTEM CANNOT OVERCOME.**

#### **WARNING AND INDICATOR LIGHTS, KEY**

- **Indicator light off:** a system active after exceeding 5 km/h (3.1 mph) after switching on the panel;

- **Indicator light continuously lit:** with the system deactivated on purpose or if there is a malfunction;

- **Indicator light flashing slowly:** with system active after key-on before exceeding 5 Km/h (3.1 mph) or in the event of certain malfunctions causing the ATC level to be locked (ATC settings no longer modifiable);

- **Indicator light flashing quickly:** when the system intervenes effectively on the traction control.

#### **ATC SYSTEM DEACTIVATED MANUALLY**

When starting the vehicle, after the instrument panel initial check cycle, if the system is deactivated, the ATC warning light remains lit until the rider decides to activate the system.

#### **ATC SYSTEM ACTIVE**

When starting the vehicle, after the instrument panel initial check cycle, the ATC warning light flashes if the system was active at the previous key-off (and is therefore still active) and continues flashing until vehicle speed exceeds 5 km/h (3.1 mph), after which it extinguishes.

If the ATC warning light is permanently on, a failure has been detected and the ATC has been automatically deactivated.

In this case carry out the following operations:

- stop the vehicle;
- key OFF-ON;
- reactivate the system manually
- ride over 5 km/h (3.1 mph): the ATC warning light must be turned off;
- ATC system working correctly.

If the 'ATC system deactivated' indication persists:

#### **NOTE**

**SHOULD THIS OCCUR, CONTACT AN aprilia Official Dealer.**



**THE ATC SYSTEM ACTS ON REAR WHEEL BY OBTAINING INFORMATION FROM THE ROTATION/LOCKING TONE WHEELS FITTED ON BOTH WHEELS. ALWAYS CHECK THAT THE TONE WHEELS ARE CLEAN, AND REGULARLY CHECK THAT THE GAP BETWEEN THE TONE WHEEL AND THE SENSOR IS CONSTANT AROUND THE ENTIRE CIRCUMFERENCE OF THE TONE WHEEL ITSELF. SHOULD THE WHEELS BE REMOVED AND REFITTED, IT IS VERY IMPORTANT TO CHECK THAT THE DISTANCE BETWEEN TONE WHEEL AND SENSOR IS THE ONE SPECIFIED. FOR CHECKING AND ADJUSTMENT, CONTACT AN Authorised APRILIA Workshop.**

#### **NOTE**

**IN CASE OF PROLONGED ROTATION OF THE REAR WHEEL WITH THE FRONT WHEEL LOCKED (BURNOUT, VEHICLE PLACED ON CENTRAL STAND, ETC.)**

**THE SYSTEM CAN BE DEACTIVATED AUTOMATICALLY WITH ATC WARNING LIGHT FIXED ON.**

**TO REACTIVATE, TURN THE IGNITION SWITCH OFF AND THEN ON AGAIN AND SELECT THE REQUIRED SETTING.**

#### **NOTE**

**THE SYSTEM SENSORS WITH A SIGNIFICANT ACCURACY IN READING THE TONE WHEELS CAN GENERATE, WITH THE MOTORCYCLE AT A STANDSTILL AND ENGINE ON, A SPEED INDICATION OF km / h (mi) IN THE DIGITAL DISPLAY.**

**SUCH BEHAVIOUR IS TO BE CONSIDERED NORMAL AND DOES NOT CREATE MALFUNCTIONS IN THE SYSTEM.**

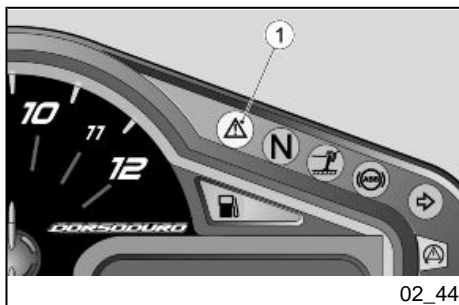
#### **Characteristic**

**Distance between tone wheel and front sensor**

0.3 - 3 mm (0.012 - 0.118 in)

**Distance between tone wheel and rear sensor**

0.3 - 3 mm (0.012 - 0.118 in)



02\_44

#### **Immobilizer system operation (02\_44)**

For enhanced theft protection, the vehicle is equipped with an electronic immobilizer system that is activated automatically when the ignition key is removed.

Keep the second key in a safe place since it is not possible to make a copy if it gets lost. This would imply replacing numerous parts of the vehicle (besides the locks).

Each key in the grip has an electronic device - transponder - which modulates the radio frequency signal emitted by a special built-in aerial in the switch when the vehicle is started.

The modulated signal is the "password" by which the appropriate central unit recognises the key and only after this occurs, it allows the engine start-up.

### CAUTION

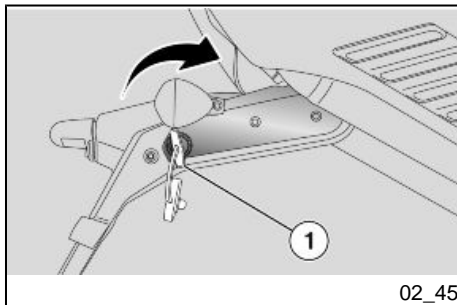
**THE IMMOBILIZER SYSTEM CAN MEMORISE UP TO FOUR KEYS.**

**DATA STORAGE OPERATION CAN ONLY BE PERFORMED AT THE DEALER'S.**

**DATA STORAGE PROCEDURE CANCELS THE EXISTING CODES. THEREFORE, IF A CUSTOMER WANTS TO PROGRAM SOME NEW KEYS, S/HE SHOULD GO TO THE DEALER TAKING ALL THE KEYS S/HE WANTS TO ENABLE.**

The immobilizer operation mode is indicated by a warning light (1) placed on the instrument panel:

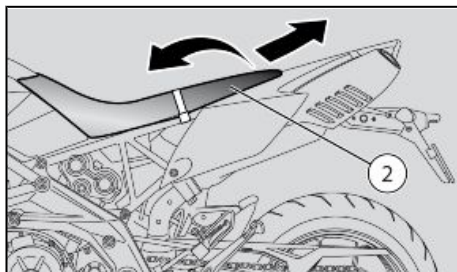
- Immobiliser off, indicator light off.
- Immobiliser armed, indicator light flashing.
- Key not recognised, indicator lamp flashing rapidly.



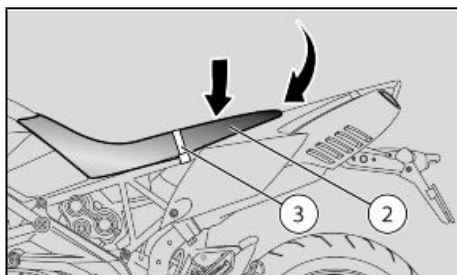
### Opening the saddle (02\_45, 02\_46, 02\_47)

- Rest the vehicle on its stand.
- Insert the key (1) in the lock on the right of the license plate holder.
- Turn the key (1) clockwise, remove the saddle (2) by sliding it off from the passenger seat strap (3).

There is a useful document / toolkit compartment in the vehicle tail fairing. Remove the saddle (2) to reach it.



02\_46



02\_47

#### To lock the saddle (2):

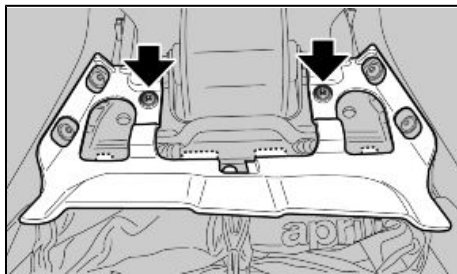
- Insert the seat (2) under the passenger seat strap (3).
- Move the saddle (2) to fasten the front retainers correctly.
- Push the centre of the saddle (2), where the rear retainers are, to trip the lock.

#### CAUTION

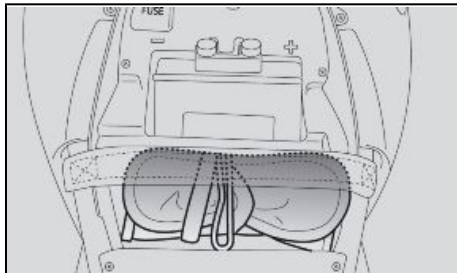
**BEFORE LOWERING AND LOCKING THE SADDLE, CHECK THAT THE KEY HAS NOT BEEN LEFT INSIDE THE GLOVE-BOX / TOOLKIT COMPARTMENT.**



**BEFORE SETTING OFF, MAKE SURE THAT THE SADDLE IS CORRECTLY LOCKED INTO POSITION.**



02\_48



02\_49

## Glove/tool kit compartment (02\_48, 02\_49)

To get access to the glove-box / toolkit:

- Remove the saddle.
- Unscrew and remove the two screws.
- Remove the guard from the back, taking the four fixing points off (dotted in the figure).

## Identification (02\_50)

Write down the chassis and engine number in the specific space in this booklet. The chassis number is handy when purchasing spare parts.

### CAUTION



**THE MODIFICATION OF THE IDENTIFICATION CODES IS A SERIOUS PUNISHABLE CRIME. HOWEVER, THE LIMITED WARRANTY FOR NEW VEHICLES WILL**

**BE VOID IF THE VEHICLE IDENTIFICATION NUMBER (VIN) HAS BEEN MODIFIED OR NOT PROMPTLY DETERMINED.**

### CHASSIS NUMBER

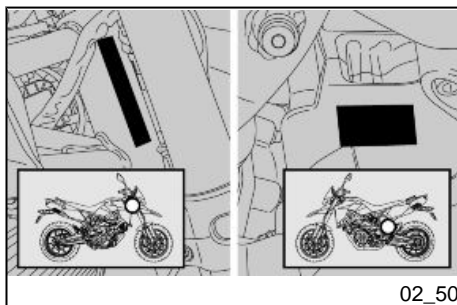
The chassis number is stamped on the right side of the headstock.

Chassis No. ....

### ENGINE NUMBER

The engine number is printed on the base of the engine crankcase, left hand side.

Engine No. ....

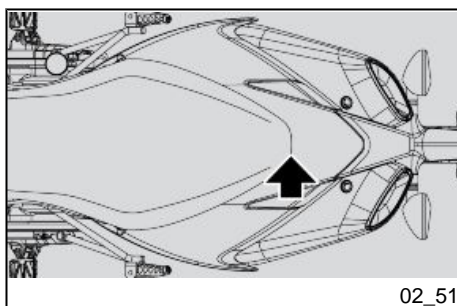


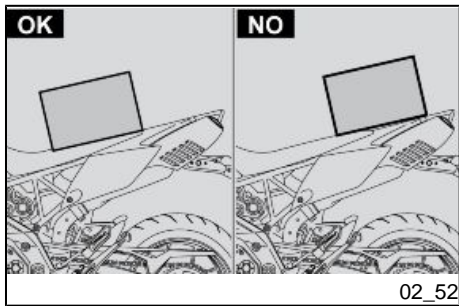
### Luggage anchor point (02\_51, 02\_52)

Never transport anything that is not secured - making absolutely certain it is firmly and securely fixed.

Secure the luggage well not forgetting that it must **not project beyond the rear edge of the saddle**. The heat from the exhaust system could damage the luggage.

Do not transport luggage that projects and that covers the luminous and acoustic signals and/or the lamps.







# DORSODURO 1200 - DORSODURO 1200 ABS - ATC



**Chap. 03**  
**Use**

## Checks (03\_01)

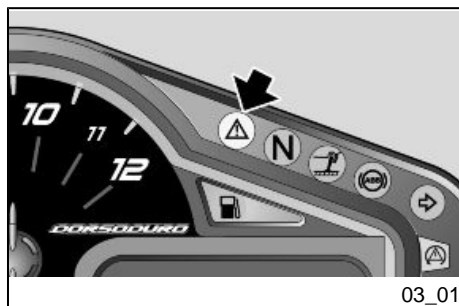
### CAUTION



**BEFORE RIDING, ALWAYS PERFORM A PRELIMINARY CHECK OF THE VEHICLE TO ENSURE CORRECT AND SAFE OPERATION. FAILURE TO DO SO MAY LEAD TO SERIOUS PERSONAL INJURY OR DAMAGE TO THE VEHICLE. DO NOT HESITATE TO CONTACT AN OFFICIAL Aprilia DEALER IF YOU DO NOT UNDERSTAND HOW SOME CONTROLS WORK OR IF A MALFUNCTION IS DETECTED OR SUSPECTED. CHECKING TAKES VERY LITTLE TIME BUT CONSIDERABLY INCREASES SAFETY.**

### CAUTION

**ACCORDING TO THE TIME ELAPSED FROM THE MOMENT THE KEY IS SET TO "KEY ON" UNTIL THE ENGINE STARTS, THE STOP LIGHT CAN BE ACTIVATED FOR ABOUT HALF A SECOND OR NOT.**



03\_01

This vehicle has been programmed to indicate in real time any operation failure stored in the electronic control unit memory.

Every time the ignition switch is turned to "KEY ON", the alarm LED warning light turns on for about three seconds on the instrument panel.

## **PRE-RIDE CHECKS**

Front and rear disc brake	Check for proper operation. Check brake lever empty travel and brake fluid level. Check for leaks. Check brake pads for wear. If necessary top-up with brake fluid.
Throttle grip	Check that the throttle functions smoothly and can be fully opened and closed in all steering positions. Adjust and/or lubricate if necessary.
Engine oil	Check and/or top-up as required.
Wheels/ tyres	<p>Check that tyres are in good conditions. Check inflation pressure, tyre wear and potential damage.</p> <p>Remove any possible strange body that might be stuck in the tread design.</p>
Brake levers	<p>Check they function smoothly.</p> <p>Lubricate the joints and adjust the travel if necessary.</p>
Clutch	Check for proper operation. Check clutch lever free play and fluid level. Check for leaks. Top-up the fluid if necessary; the clutch must work without gripping and/or sliding.

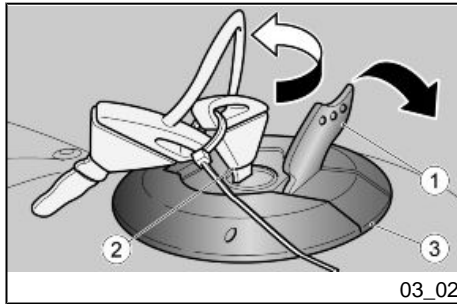
Steering	Check that the rotation is uniform, smooth and there are no signs of clearance or slackness.
Side stand / Centre stand OPTIONAL	<p>Check it works properly. Check that there is no resistance when the side stand is pulled up and down and that the spring tension makes it snap back to its rest position.</p> <p>Lubricate couplings and joints if necessary.</p> <p>Check the safety switch for correct operation.</p>
Clamping elements	<p>Check that the clamping elements are not loose.</p> <p>Adjust or tighten them as required.</p>
Drive chain	Check it for backlash.
Fuel tank	<p>Check the coolant level and refill if necessary.</p> <p>Check the circuit for leaks or obstructions.</p> <p>Check that the tank cap closes correctly.</p>
Coolant	Fluid level inside the expansion tank should be between the ' <b>FULL</b> ' and ' <b>LOW</b> ' reference marks.
Engine stop switch (ON - OFF)	Check function.

Lights, warning lights, horn, rear stop light switch and electrical devices

Check function of horn and lights. Replace bulbs or repair any faults noted.

Tone wheels (only for vehicles with ABS system)

Check that the tone wheels are perfectly clean



## Refuelling (03\_02, 03\_03)

To refuel:

- Lift the cover (1).
- Introduce the key (2) in the fuel tank cap lock (3).
- Turn the key anticlockwise, lift and remove the fuel filler cap.
- Refuel.

### CAUTION



**DO NOT ADD ADDITIVES OR ANY OTHER SUBSTANCES TO THE FUEL.**

**WHEN USING A FUNNEL OR ANY OTHER ELEMENT, MAKE SURE IT IS PERFECTLY CLEAN.**

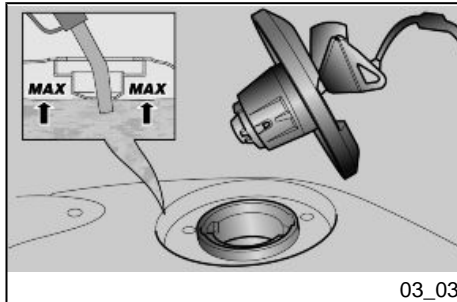


**DO NOT FILL THE TANK UP TO THE RIM; FUEL MAXIMUM LEVEL MUST ALWAYS BE BELOW THE LOWER EDGE OF THE FILLER NECK (SEE FIGURE).**

### Characteristic

**Fuel tank (reserve included)**

15 l (3.30 UK gal; 3.96 USgal)



**Fuel reserve**

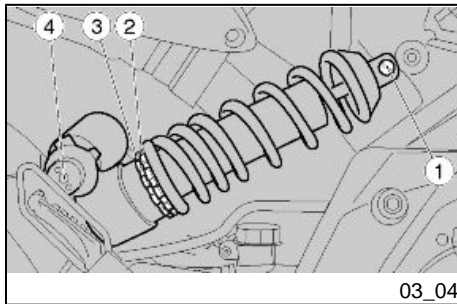
2.5 l (0.55 UK gal; 0.66 US gal)

**after refuelling:**

- The fuel cap may only be refitted with the key (2) inserted.
- Once the key (2) is inserted, press the cap to close it again.
- Remove the key (2).
- Close the cover (1).



**MAKE SURE THE CAP IS TIGHTLY CLOSED.**

**Rear shock absorbers adjustment (03\_04, 03\_05)**

The rear suspension consists of a spring-shock absorber unit linked to the frame via uniball joints.

To adjust the setting, the shock absorber has one set screw (1) to adjust rebound damping, a ring nut for spring preloading adjustment (2), a locking ring nut (3) and a set screw for adjusting compression damping (4).

**CAUTION**

**CARRY OUT MAINTENANCE OPERATIONS AT HALF THE INTERVALS RECOMMENDED IF THE VEHICLE IS USED IN WET OR DUSTY AREAS, OFF ROAD OR FOR SPORTING APPLICATIONS.**

**CHECK THE REAR SHOCK ABSORBER AND ADJUST, IF NECESSARY.**

**REAR SHOCK ABSORBER STANDARD SETTING IS ADJUSTED TO MEET TOURIST RIDING.**

HOWEVER, THIS SET CAN BE ADJUSTED TO SPECIFIC NEEDS ACCORDING TO VEHICLE USE.



WHEN COUNTING THE NUMBER OF CLICKS OF THE ADJUSTER SCREW (1), ALWAYS START FROM THE STIFFEST SETTING (ADJUSTER SCREW FULLY CLOCKWISE).

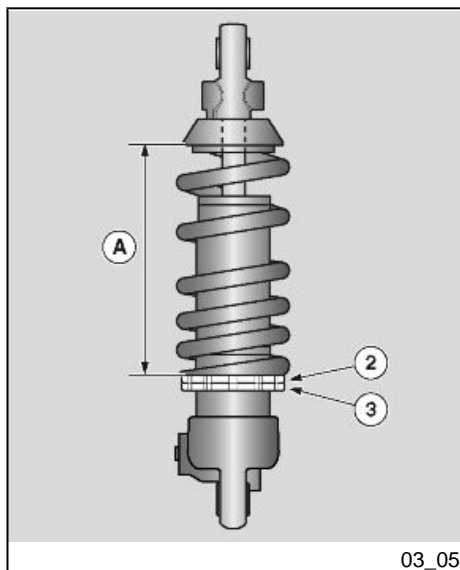
TO AVOID DAMAGE, DO NOT FORCE THE ADJUSTER SCREWS (1) BEYOND THE RESPECTIVE END OF TRAVEL ON EITHER SIDE.

- Turn the (1) screw to adjust the shock absorber hydraulic rebound damping.



ADJUST SHOCK ABSORBER REBOUND DAMPING TO SUIT THE VEHICLE OPERATING CONDITIONS.

THE STANDARD SPRING PRELOAD SETTING IS SUITABLE FOR THE MAJORITY OF RIDING CONDITIONS. IF REQUIRED, CONTACT AN OFFICIAL Aprilia DEALER TO REQUEST A PERSONALISED SETTING.



03\_05

## ADJUSTMENTS

### Regular adjustment (standard):

- rider only.

### Medium load setting:

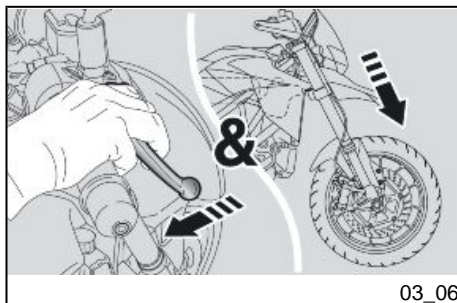
- (for example, rider with passenger and/or luggage).

### Setting for sports use.

## REAR SHOCK ABSORBER ADJUSTMENT

<b>REAR SHOCK ABSORBER ADJUSTMENT</b>	<b>Standard</b>	<b>Medium load</b>	<b>Sports use</b>
Rebound damping adjustment, screw (1)	Open 17 clicks from fully closed	Open 12 - 16 clicks from fully closed	Open 12 - 16 clicks from fully closed
Compression damping adjustment, screw (4)	Open 1.5 turns from fully closed	Open 0.5 - 1.5 turns from fully closed	Open 0 - 1.5 turns from fully closed
Spring A length	170 +/- 1.5 mm (6.69 +/- 0.059 in)	170 +/- 1.5 mm (6.69 +/- 0.059 in)	170 +/- 1.5 mm (6.69 +/- 0.059 in)
Spring preload, ring nut (2)	Contact an Official Aprilia Dealer	Contact an Official Aprilia Dealer	Contact an Official Aprilia Dealer





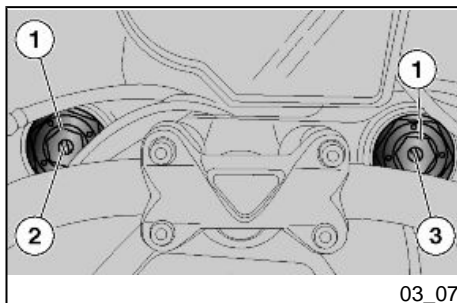
03\_06

### Front fork adjustment (03\_06, 03\_07, 03\_08)

- Operating the front brake lever, press the handlebar repeatedly to send the fork fully down. The stroke should be soft and there should be no oil marks on the stems.
- Check the tightening of all the elements and the correct operation of the front and rear suspension joints.

#### CAUTION

**PLEASE CONTACT AN Official Aprilia Dealer TO HAVE THE FRONT FORK OIL CHANGED AND ITS OIL SEALS REPLACED.**



03\_07

The front suspension consists of a hydraulic fork connected to the headstock by means of two plates.

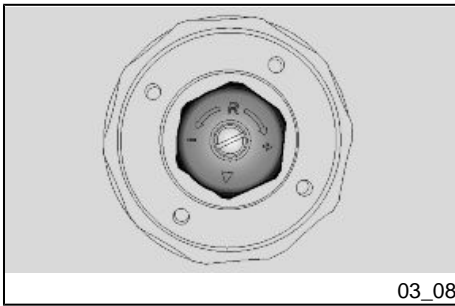
For adjusting the suspension setup, each stanchion has an upper nut (1) for adjusting the spring preload.

The left hand stem is also equipped with an upper adjuster screw (2) for adjusting hydraulic rebound damping.

The right hand stem is equipped with an upper set screw (3) for adjusting compression damping.

#### CAUTION

**TO PREVENT DAMAGE, DO NOT FORCE THE ADJUSTER (1-2) BEYOND THE RESPECTIVE END OF TRAVEL IN EITHER DIRECTION. USE THE SAME SPRING PRELOAD SETTINGS FOR BOTH STEMS: RIDING THE VEHICLE WITH DIFFERENT SETTINGS FOR THE TWO STANCHIONS REDUCES STABILITY. WHEN SPRING PRELOAD IS INCREASED, REBOUND DAMPING MUST ALSO BE INCREASED TO PREVENT EXCESSIVE SUSPENSION KICKBACK WHEN RIDING.**



03\_08

## ADJUSTMENTS

### Regular adjustment (standard):

- rider only.

### Medium load setting:

- (for example, rider with passenger and/or luggage).

### Setting for sports use.

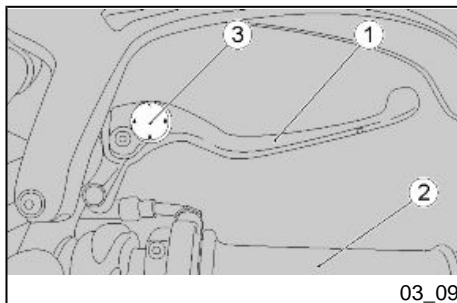
## CAUTION



**TO COUNT THE NUMBER OF RELEASES AND/OR REVOLUTIONS OF ADJUSTMENT SETTINGS (1 - 2) ALWAYS START FROM THE MOST RIGID SETTING (WHOLE CLOCKWISE ROTATION OF THE SETTING). DO NOT FORCE THE SET SCREWS (1 - 2) TO TURN BEYOND THE END OF THE STROKE ON BOTH SIDES SO AS NOT DAMAGE THEM.**

## FRONT FORK ADJUSTMENT

FRONT FORK ADJUSTMENT	Standard	Medium load	Sports use
Spring preloading, nut (1)	Open 5 turns from fully closed	Open 5 turns from fully closed	Open 5 turns from fully closed
Rebound damping adjustment, screw (2)	Open 10 turns from fully closed	Open 5 - 10 turns from fully closed	Open 5 - 10 turns from fully closed
Compression damping adjustment, screw (3)	Open 10 turns from fully closed	Open 5 - 10 turns from fully closed	Open 5 - 10 turns from fully closed

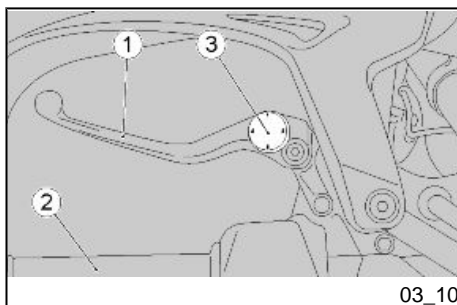


### Justering af greb til forbremse (03\_09)

The distance between the end of the lever (1) and the handgrip (2) can be adjusted by rotating the set screw (3).

The MAX and MIN clicks correspond to a lever end-handgrip distance of about 114 mm (4.49 in) and 96 mm (3.78 in) respectively.

- Push the control lever (1) forward and turn the set screw (3) until the lever (1) is at the desired distance.



### Clutch lever adjustment (03\_10)

The distance between the end of the lever (1) and the handgrip (2) can be adjusted by rotating the set screw (3).

The MAX and MIN clicks correspond to a lever end-handgrip distance of about 118 mm (4.65 in) and 115 mm (4.53 in) respectively.

- Push the control lever (1) forward and turn the set screw (3) until the lever (1) is at the desired distance.

## Running in

Engine run-in is essential to ensure engine long life and correct operation. Twisty roads and gradients are ideal to run in engine, brakes and suspensions effectively. Vary your riding speed during the run-in. In this way, you allow for the work of components to be "loaded" and then "unloaded", thus cooling the engine parts.

### CAUTION

**DURING THE FIRST 400 Km (248 mi) OF THE RUNNING-IN STAGE, THE ECU LIMITS ENGINE SPEED TO 6500 RPM IN ALL GEARS. ONCE THIS MILEAGE IS**

**EXCEEDED, THE ECU AUTOMATICALLY IMPLEMENTS THE DEFINITIVE CONFIGURATION, ALLOWING THE ENGINE TO EXPRESS ITS FULL POTENTIAL.**

#### **CAUTION**

**THE FULL PERFORMANCE OF THE VEHICLE IS ONLY AVAILABLE AFTER THE SERVICE AT THE END OF THE RUNNING IN PERIOD.**

**Follow the guidelines detailed below:**

- Do not fully open the throttle grip abruptly at low engine speeds, either during or after the running in period.
- During the first 100 Km (62 miles) use the brakes gently, avoiding sudden or prolonged braking. That is to permit the adequate adjustment of the pad friction material to the brake discs.



**AFTER THE SPECIFIED MILEAGE, TAKE YOUR VEHICLE TO AN Official Aprilia Dealer FOR THE CHECKS INDICATED IN THE "AFTER-RUN-IN" TABLE IN THE SCHEDULED MAINTENANCE SECTION TO AVOID INJURING YOURSELF, OTHERS AND /OR DAMAGING THE VEHICLE.**

### **Starting up the engine (03\_11, 03\_12, 03\_13, 03\_14, 03\_15, 03\_16)**

**This vehicle is extremely powerful and must be used carefully and driven with caution and respect for its power and potential.**

**Do not carry objects in the top fairing (between the handlebar and the instrument panel) so that the handlebar can turn freely and the instrument panel is visible at all times.**



**EXHAUST FUMES CONTAIN CARBON MONOXIDE, AN EXTREMELY HARMFUL SUBSTANCE IF INHALED.**

**NEVER START THE ENGINE IN A CLOSED OR INSUFFICIENTLY VENTILATED SPACE.**

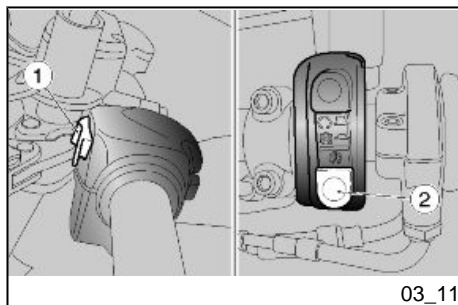


**FAILURE TO OBSERVE THIS WARNING COULD LEAD TO UNCONSCIOUSNESS AND EVEN DEATH DUE TO SUFFOCATION.**

#### CAUTION

**WITH THE SIDE STAND LOWERED, THE ENGINE MAY ONLY BE STARTED WITH THE GEARBOX IN NEUTRAL. IF YOU ATTEMPT TO ENGAGE A GEAR IN THIS CONDITION THE ENGINE WILL STOP.**

**WITH THE SIDE STAND RETRACTED, THE ENGINE MAY BE STARTED WITH THE GEARBOX IN NEUTRAL OR WITH GEAR ENGAGED AND THE CLUTCH LEVER PRESSED.**

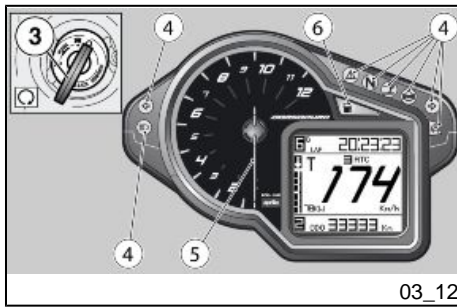


03\_11

- Get onto the bike in riding position.
- Make sure that the stand has been fully retracted.
- Make sure the light switch (1) is set to the low beam light position.
- Set the engine stop switch (2) to RUN.
- Turn the key (3) and set the ignition switch to ON.

At this stage:

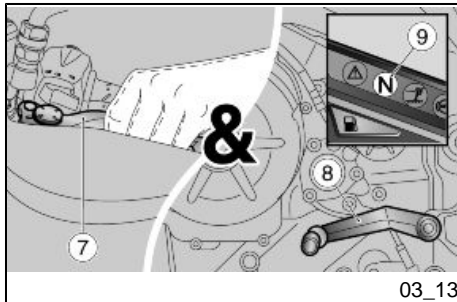
- The multifunction display shows the ignition screen for 2 seconds.
- On the instrument panel, all warning lights (4) and the backlighting are on for 2 seconds.
- The rpm indicator (5) goes to the bottom of the scale and after 3 seconds, it goes back to the minimum value.
- The current value is instantly indicated on the instrument panel during regular vehicle riding.



**IF THE LOW FUEL WARNING LIGHT (6) ON THE INSTRUMENT PANEL TURNS ON, REFUEL THE VEHICLE AT ONCE.**



**THE OVERREVVING THRESHOLD IN NEW VEHICLES IS SET TO 6000 RPM. RAISE THIS THRESHOLD AS YOU GET USED TO THE VEHICLE.**



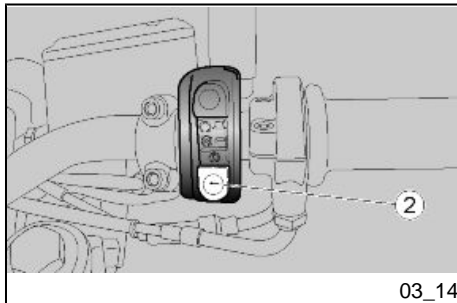
- Block at least one wheel by operating one brake lever.
- Operate the clutch lever (7) completely and set the gearshift lever (8) to neutral (green warning light "N" (9) on).
- There is a starter on the vehicle, controlled by the control unit, that starts working automatically whenever necessary (cold start).



**TO AVOID EXCESSIVE BATTERY CONSUMPTION, DO NOT HOLD DOWN THE STARTER BUTTON (2) MORE THAN TEN SECONDS.**

**IF THE ENGINE FAILS TO START AFTER THIS TIME, WAIT TEN SECONDS AND PRESS THE STARTER BUTTON (2) AGAIN.**

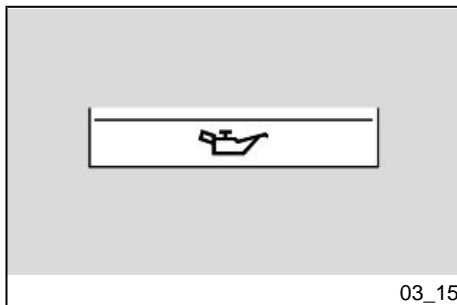
**PRESS THE STARTER BUTTON (2) BUT DO NOT ACCELERATE, AND RELEASE IT AS SOON AS THE ENGINE STARTS.**



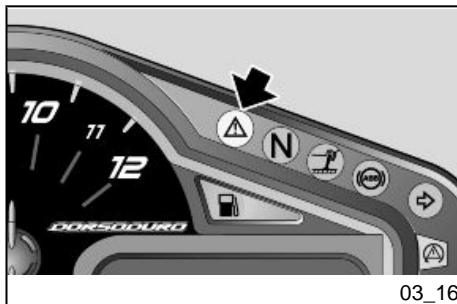


**AVOID PRESSING THE STARTER BUTTON (2) WHEN THE ENGINE HAS ALREADY STARTED, AS THIS COULD DAMAGE THE STARTER MOTOR.**

**IF THE ENGINE OIL PRESSURE ICON IS DISPLAYED AND THE GENERAL WARNING LIGHT IS ON, THIS MEANS THAT THE OIL PRESSURE IN THE CIRCUIT IS TOO LOW.**



03\_15



03\_16

- Engage at least one brake lever and do not accelerate until you set off.



**DO NOT SET OFF SUDDENLY WHEN THE ENGINE IS COLD. RIDE AT LOW SPEED FOR SEVERAL KILOMETRES. THIS WILL ALLOW THE ENGINE TO WARM UP AND REDUCE POLLUTING EMISSIONS AND FUEL CONSUMPTION.**

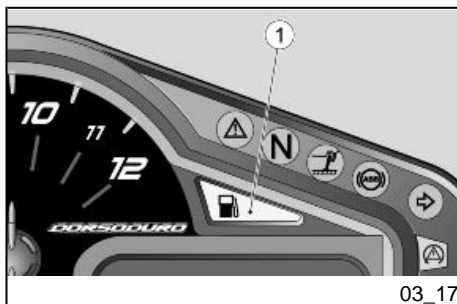


**IF THE WORD "SERVICE" IS SHOWN ON THE (MULTIFUNCTION) DISPLAY DURING REGULAR ENGINE OPERATION, THIS MEANS THAT THE ELECTRONIC CONTROL UNIT HAS DETECTED A PROBLEM.**

### **Ride by wire**

The vehicle is fitted with an innovative throttle control system, called RIDE BY WIRE, which ensures optimum engine performance, at all times, taking into account the rider's demand, the general operating conditions plus the external conditions (atmospheric pressure, temperature). If compared with traditional injection systems, it also allows an electronic control of the throttle, thus replacing the traditional cable. When riding at high altitudes, the RIDE BY WIRE system offsets the unavoidable loss of power (1% every 100 metres of slope due to the reduced concentration of oxygen in the air) by opening the throttle bodies. Therefore, the engine performance when torque demand is requested by means of the throttle is the same as when riding on level ground, thus shifting the characteristic power reduction to the highest speeds. As a result, throttles are fully open but the throttle grip is not fully twisted; therefore, in case the throttle grip is further and fully twisted, the vehicle performance will not be further enhanced.





03\_17

## Moving off / riding (03\_17, 03\_18, 03\_19, 03\_20, 03\_21, 03\_22, 03\_23)

### CAUTION

IF, WHILE RIDING, THE LOW FUEL WARNING LIGHT (1) ON THE INSTRUMENT PANEL TURNS ON, IT MEANS THERE IS STILL SOME FUEL LEFT.

REFUEL AS SOON AS POSSIBLE.

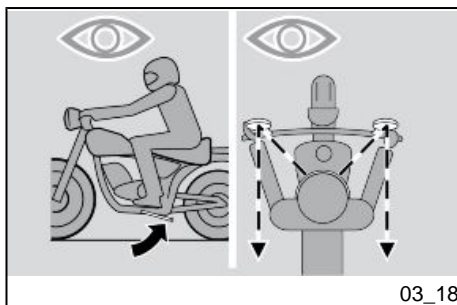
### CAUTION

WHEN TRAVELLING WITHOUT PASSENGERS, MAKE SURE THE PASSENGER FOOTRESTS ARE FOLDED UP.

### CAUTION

PASSENGERS MUST BE SUITABLY INSTRUCTED ON HOW TO BEHAVE TO PREVENT DANGEROUS SITUATIONS WHEN RIDING.

BEFORE SETTING OFF, MAKE SURE THE STAND HAS BEEN COMPLETELY RETRACTED TO ITS POSITION.



03\_18

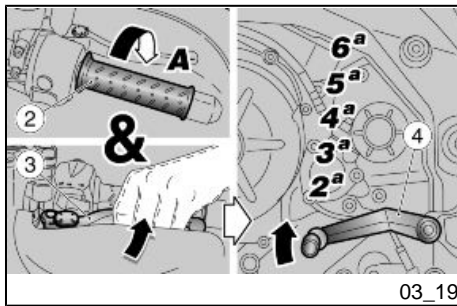
### To start:

- Turn on the engine.
- Adjust the inclination of the rear-view mirrors to ensure proper visibility.

### CAUTION



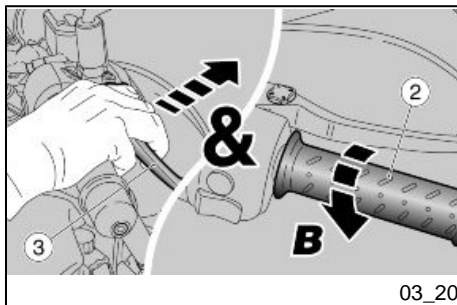
WITH THE VEHICLE AT A STANDSTILL, PRACTICE USING THE REAR-VIEW MIRRORS. THE MIRRORS ARE CONVEX, SO OBJECTS MAY SEEM FARTHER AWAY THAN THEY REALLY ARE. THESE MIRRORS OFFER A WIDE-ANGLE VIEW AND ONLY EXPERIENCE HELPS YOU JUDGE THE DISTANCE SEPARATING YOU AND THE VEHICLE BEHIND.



- With throttle grip (2) closed (**Pos. A**) and engine at idle, operate the clutch lever (3).
- Push the gearbox lever (4) downward to select the first gear.
- Release the clutch lever (activated during start-up).

#### CAUTION

**WHEN TURNING OFF THE VEHICLE, DO NOT RELEASE THE CLUTCH TOO QUICKLY OR SUDDENLY, AS THIS COULD CAUSE THE ENGINE TO STOP OR THE VEHICLE TO REAR UP ON THE BACK WHEEL. DO NOT ACCELERATE SUDDENLY WHEN RELEASING THE CLUTCH FOR THE SAME REASON.**



- Slowly release the clutch lever (3) and at the same time accelerate by slightly twisting the throttle grip (2) (**Pos. B**).

The vehicle starts moving forward.

- For the first kilometres travelled, limit the speed in order to warm up the engine.



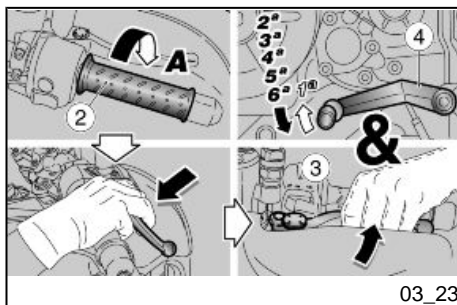
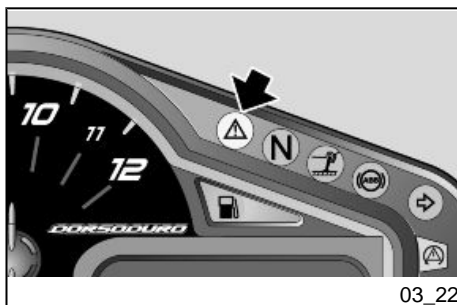
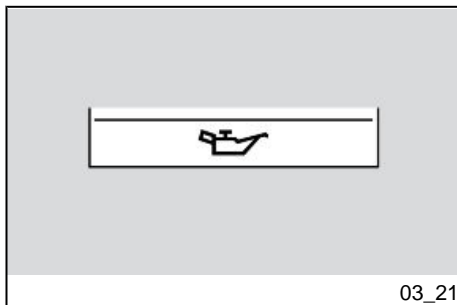
**DO NOT EXCEED THE MAXIMUM RECOMMENDED ENGINE SPEED.**

- Accelerate gradually by twisting the throttle grip (2) (**Pos. B**) without exceeding the recommended rpm.

**To engage the second gear:**



**RIDE IN THE CORRECT GEAR AND SPEED FOR THE CONDITIONS.  
DO NOT OPERATE THE ENGINE AT A TOO LOW RPM LEVEL.**



- Release the throttle grip (2) (**Pos. A**), operate the clutch lever (3), lift the gearshift lever (4), release the clutch lever (3) and accelerate.
- Repeat the last two operations and engage a higher gear.



**IF THE ENGINE OIL PRESSURE ICON IS DISPLAYED AND THE GENERAL WARNING LIGHT IS ON DURING REGULAR ENGINE OPERATION, THIS MEANS THAT THE ENGINE OIL PRESSURE IN THE CIRCUIT IS TOO LOW.**

**IF THIS OCCURS, STOP THE ENGINE AND CONTACT AN APRILIA Official Dealer.**

**SHIFTING FROM A HIGHER TO A LOWER GEAR, CALLED "DOWNSHIFT", IS CARRIED OUT:**

- When riding downhill and when braking, in order to increase the braking power by using engine compression.
- When going uphill, when the engaged gear does not suit the speed (high gear, moderate speed) and the number of engine revs falls.

#### **CAUTION**

**DOWNSHIFT ONE GEAR AT A TIME; WHEN SHIFTING TO A LOWER GEAR, DOWNSHIFTING MORE THAN ONE GEAR AT A TIME COULD OVERREV THE ENGINE; THAT IS, THE MAXIMUM RPM VALUE PERMITTED FOR THE ENGINE COULD BE EXCEEDED.**

- Release the throttle grip (2) (**Pos. A**)
- If necessary, pull the brake levers gently and reduce speed.
- Operate the clutch lever (3) and lower the gearshift lever (4) to engage a lower gear.
- Release the brake levers when it is operated.
- Release the clutch lever (3) and accelerate moderately.



**IF AN ENGINE OVERHEATING ALARM INDICATOR IS SHOWN ON THE MULTI-FUNCTION DIGITAL DISPLAY, STOP THE VEHICLE AND LET THE ENGINE RUN AT 3000 rpm FOR ABOUT TWO MINUTES, SO THAT THE COOLANT FLOWS REGULARLY IN THE SYSTEM; THEN SET THE ENGINE STOP SWITCH TO "OFF" AND CHECK THE COOLANT LEVEL.**

**IF THE TEMPERATURE INDICATOR CONTINUES FLASHING AFTER CHECKING THE COOLANT LEVEL, CONTACT AN OFFICIAL APRILIA DEALER.**

**DO NOT TURN THE IGNITION KEY TO "KEY OFF", BECAUSE THE COOLING FANS WOULD STOP REGARDLESS OF THE COOLANT TEMPERATURE, WHICH WOULD CAUSE A FURTHER TEMPERATURE RISE.**

**IF THE GENERAL WARNING LIGHT ACTIVATES ON THE INSTRUMENT PANEL DURING REGULAR ENGINE OPERATION, THIS MEANS THAT SOME FAILURES HAVE BEEN DETECTED.**

**IN MANY CASES THE ENGINE WILL CONTINUE TO OPERATE WITH LIMITED PERFORMANCE; IMMEDIATELY CONTACT AN Official APRILIA Dealer.**

**IN ORDER TO AVOID CLUTCH OVERHEATING, SHUT THE ENGINE OFF AS SOON AS POSSIBLE ONCE THE VEHICLE HAS STOPPED AND AT THE SAME TIME THE GEAR IS ENGAGED AND THE CLUTCH LEVER OPERATED.**



**OPERATING ONLY EITHER THE FRONT OR THE REAR BRAKE SIGNIFICANTLY REDUCES BRAKING POWER AND A WHEEL MAY GET BLOCKED RESULTING IN LACK OF GRIP.**

**WHEN STOPPING WHILE TRAVELLING UPHILL, CLOSE THE THROTTLE COMPLETELY AND ONLY USE THE BRAKES TO HOLD THE VEHICLE IN POSITION.**

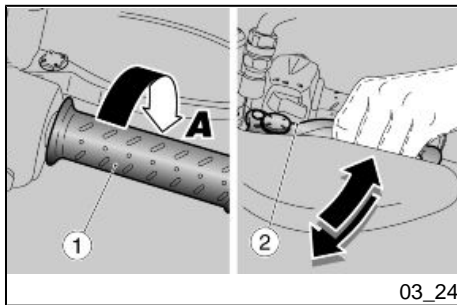
**USING THE ENGINE TO HOLD THE VEHICLE ON A HILL MAY CAUSE THE CLUTCH TO OVERHEAT.**

**BRAKING CONTINUOUSLY WHILE GOING DOWNHILL MAY RESULT IN FRICTION GASKET OVERHEATING AND CONSEQUENTLY IN POOR BRAKING.**

**TAKE ADVANTAGE OF THE ENGINE COMPRESSION AND SHIFT UP GEARS USING THE BRAKES ALTERNATIVELY.**

**NEVER RIDE WITH THE ENGINE OFF WHEN GOING DOWNHILL.**

**WHEN RIDING ON WET SURFACES OR WITH POOR GRIP (SNOW, ICE, MUD, ETC.) RIDE AT A MODERATE SPEED AVOIDING SUDDEN BRAKING OR MANOEUVRES THAT MAY LEAD TO LACK OF GRIP AND CONSEQUENTLY TO FALLS.**



## Stopping the engine (03\_24)

- Release the throttle grip (1) (**Pos. A**), brake gradually and at the same time "downshift" gears to slow down.

### Once the speed is reduced, before stopping the vehicle:

- Operate the clutch lever (2) so that engine does not shut off.

### When the vehicle is at a standstill:

- Set the gearshift lever in neutral (green "N" indicator light lit).
- Release the clutch lever.
- While at a temporary halt, keep at least one of the vehicle brakes held.

### CAUTION



**WHENEVER POSSIBLE, AVOID ROUGH BRAKING, SUDDEN DECELERATION AND BRAKING IN EXCESS.**

## Parking

It is very important to select an adequate parking spot, in compliance with road signals and the guidelines described below.

### NOTE

**TO MOVE THE BIKE, GRIP THE HANDLEBAR WITH ONE HAND AND THE PASSENGER BELT (ON THE SADDLE) WITH THE OTHER. WHATEVER YOU DO DO NOT TAKE HOLD OF THE EXHAUST GUARDS.**

### CAUTION

**PARK ON SAFE AND LEVEL GROUND TO PREVENT THE VEHICLE FROM FALLING.**

**DO NOT LEAN THE VEHICLE AGAINST A WALL OR LAY IT ON THE GROUND.**

**MAKE SURE THE VEHICLE AND SPECIALLY ITS HOT PARTS DO NOT POSE ANY RISK TO PEOPLE OR CHILDREN. DO NOT LEAVE YOUR VEHICLE UNATTENDED WITH THE ENGINE ON OR THE KEY IN THE IGNITION SWITCH.**

#### **CAUTION**

**IF THE VEHICLE FALLS OR IS ON A STEEP INCLINE FUEL CAN LEAK.**

**FUEL USED TO DRIVE INTERNAL COMBUSTION ENGINES IS HIGHLY FLAMMABLE AND CAN BECOME EXPLOSIVE UNDER CERTAIN CONDITIONS.**



**DO NOT REST THE RIDER OR PASSENGER WEIGHT ON THE SIDE STAND.**

### **Catalytic silencer**

The vehicle has a silencer with a "platinum - palladium - rhodium three-way" metal catalytic converter.

This device oxidises the CO (carbon monoxide) producing carbon dioxide, and the UHC (unburned hydrocarbons) producing water vapour and reduces NOx (nitrogen oxide) producing oxygen and nitrogen present in the exhaust fumes.



**DO NOT PARK THE VEHICLE NEAR DRY BRUSHWOOD OR IN PLACES EASILY ACCESSIBLE BY CHILDREN BECAUSE THE CATALYTIC CONVERTER REACHES HIGH TEMPERATURES DURING VEHICLE OPERATION; FOR THIS REASON, PAY UTMOST ATTENTION AND DO NOT TOUCH IT UNTIL IT HAS COMPLETELY COOLED DOWN.**

**NEVER USE LEADED PETROL AS THIS WILL CONTAMINATE THE CATALYTIC CONVERTER, RENDERING IT INOPERATIVE.**

Vehicle owners are warned that the law may prohibit the following:

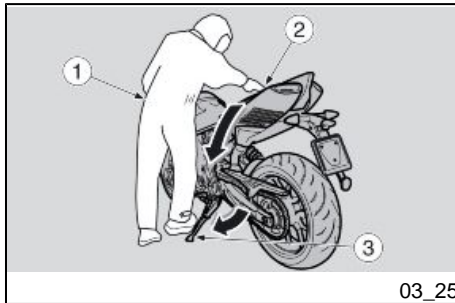
- the removal of any device or element belonging to a new vehicle or any other action by anyone leading to render it non-operating, if not for maintenance, repair or replacement reasons, in order to control noise emission before the sale or delivery of the vehicle to the ultimate buyer or while it is used;
- using the vehicle after that device or element has been removed or rendered non-operating.

Check the muffler/exhaust silencer and the silencer pipes, make sure there are no signs of rust or holes and that the exhaust system works properly.

If you not an increase in exhaust noise, take your vehicle to an Official **Aprilia Dealer** at once.

#### NOTE

**DO NOT TAMPER WITH THE EXHAUST SYSTEM.**



#### Stand (03\_25)

If the side stand must be lowered for any reason (for example after moving the vehicle), proceed as described below:

- Select an appropriate parking area.
- Grasp the left handgrip (1) and place your right hand on the rear upper part of the vehicle (2).
- Lower the side stand with your right foot, and extend it completely (3).
- Tilt the motorcycle until the stand touch the ground.
- Turn the handlebar fully leftwards.



**MAKE SURE THAT THE GROUND ON WHICH THE MOTORCYCLE IS PARKED IS STABLE, EVEN AND FREE OF OBSTACLES.**



## Suggestion to prevent theft

### CAUTION

**WHEN USING A DISC LOCKING DEVICE, PAY UTMOST ATTENTION TO REMOVE IT BEFORE RIDING. FAILURE TO OBSERVE THIS WARNING MAY CAUSE SERIOUS DAMAGE TO THE BRAKING SYSTEM AND ACCIDENTS WITH CONSEQUENT PHYSICAL INJURIES OR EVEN DEATH.**

NEVER leave the ignition key in the lock and always use the steering lock. Park the vehicle in a safe place such as a garage or a place with guards. Whenever possible, use an additional anti-theft device. Make sure all vehicle documents are in order and the road tax paid. Write down your personal details and telephone number on this page to help identifying the owner in case of vehicle retrieval after a theft.

LAST NAME: .....

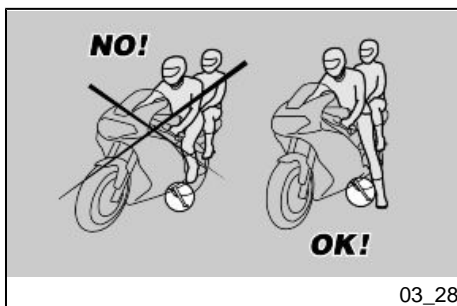
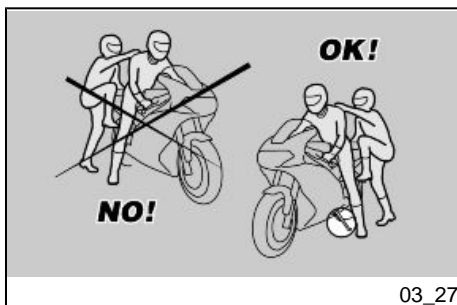
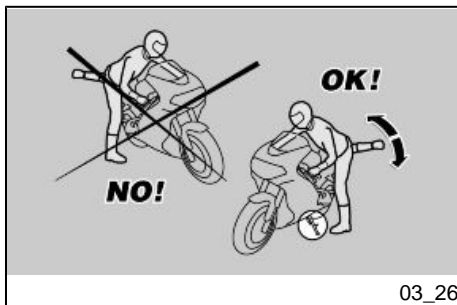
NAME: .....

ADDRESS: .....

TELEPHONE No: .....

### WARNING

**IN MANY CASES, STOLEN VEHICLES CAN BE IDENTIFIED BY DATA IN THE USE / MAINTENANCE BOOKLET**

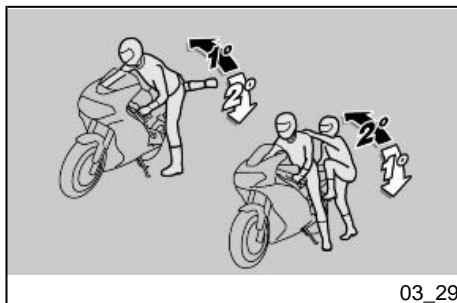


### Basic safety rules (03\_27)

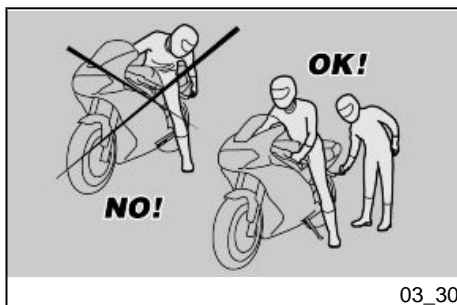
Follow the instructions given below attentively to avoid injuring persons, damaging property or the vehicle in the event of the rider or the passenger falling off the vehicle and/or the vehicle falling or overturning.

When getting on and off the vehicle, make sure nothing is restricting your movements; do not hold any objects in your hands (helmet, gloves or goggles not put on).

Always get on and off the vehicle on the left side and with the side stand lowered.



03\_29



03\_30

The stand has been designed to support the weight of the vehicle and a minimum load, without the added weight of rider and passenger.

The purpose of the side stand is to prevent the vehicle from falling or overturning while rider and passenger get on the vehicle and get ready to ride; the stand should not be used to support the weight of rider and passenger.

While getting on and off, the vehicle may become unstable due to its weight and it may fall or overturn.

#### CAUTION

**THE RIDER MUST GET ON THE VEHICLE FIRST AND GET OFF LAST TO BE ABLE TO CONTROL AND BALANCE THE VEHICLE WHILE THE PASSENGER IS GETTING ON OR OFF THE VEHICLE.**

When getting on and off the vehicle, the passenger must move carefully so as not to cause a loss of stability for vehicle and rider.

#### CAUTION

**THE RIDER MUST INSTRUCT THE PASSENGER ON HOW TO GET ON AND OFF THE VEHICLE SAFELY.**

**THE VEHICLE IS EQUIPPED WITH PASSENGER FOOTRESTS TO FACILITATE GETTING ON OR OFF THE VEHICLE. THE PASSENGER MUST ALWAYS USE THE LEFT FOOTREST TO GET ON AND OFF THE VEHICLE.**

**NEVER ATTEMPT TO GET OFF THE VEHICLE BY JUMPING OR STRETCHING YOUR LEG TO REACH THE GROUND. THESE ARE INCORRECT PROCEDURES THAT COMPROMISE VEHICLE STABILITY AND BALANCE.**

#### **CAUTION**

**ANY BAGS OR OBJECTS STRAPPED TO THE REAR OF THE VEHICLE CAN REPRESENT AN OBSTACLE WHILE GETTING ON AND OFF.**

**SWING YOUR RIGHT LEG OVER THE SEAT IN A CONTROLLED MOVEMENT SO AS NOT TO HIT THE REAR PART OF THE VEHICLE (TAIL FAIRING OR LUGGAGE) AND COMPROMISE STABILITY.**

#### **GETTING ON THE VEHICLE**

- Grip the handlebar correctly and get on the vehicle without resting your weight on the side stand

#### **CAUTION**

**IF YOU CAN NOT REACH THE GROUND WITH BOTH FEET WHEN SEATED, PLACE YOUR RIGHT FOOT ON THE GROUND (IF YOU LOSE BALANCE, THE SIDE STAND WILL PREVENT A FALL ON THE LEFT SIDE) AND BE READY TO PUT YOUR LEFT FOOT ON THE GROUND.**

- Place both feet on the ground, straighten and balance the vehicle keeping it upright in riding position.

#### **CAUTION**

**THE RIDER MUST NOT EXTRACT OR ATTEMPT TO EXTRACT THE PASSENGER FOOTRESTS WHILE SEATED, BECAUSE THIS MIGHT COMPROMISE VEHICLE STABILITY AND BALANCE.**

- Have the passenger fold out the two passenger footrests.
- Give instructions as necessary to help the passenger mount the vehicle.
- Lift and retract the side stand completely with the left foot.

#### **GETTING OFF THE VEHICLE**

- Select an appropriate parking spot.
- Stop the vehicle.



**MAKE SURE THAT THE GROUND ON WHICH THE MOTORCYCLE IS PARKED IS STABLE, EVEN AND FREE OF OBSTACLES.**

- With the left shoe heel, lower and extend the side stand completely.

#### **CAUTION**

**IF YOU CAN NOT REACH THE GROUND WITH BOTH FEET WHEN SEATED, PLACE YOUR RIGHT FOOT ON THE GROUND (IF YOU LOSE BALANCE, THE SIDE STAND WILL PREVENT A FALL ON THE LEFT SIDE) AND BE READY TO PUT YOUR LEFT FOOT ON THE GROUND.**

- Place both feet on the ground and keep the vehicle balanced in the upright position.
- Give instructions as necessary to help the passenger dismount the vehicle.



**RISK OF FALLING AND OVERTURNING.**

**MAKE SURE THE PASSENGER HAS GOT OFF THE VEHICLE.**

**DO NOT REST YOUR WEIGHT ON THE SIDE STAND.**

- Tilt the motorcycle until the stand touch the ground.
- Grasp the handlebar firmly and get off the vehicle.
- Turn the handlebar fully leftwards.
- Return the passenger footrests to position.

**CAUTION**

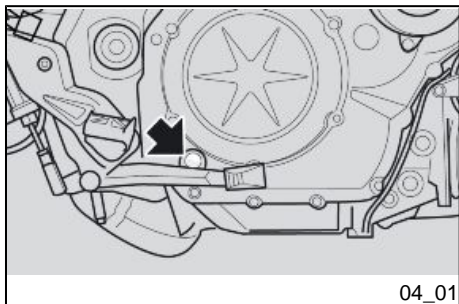


**MAKE SURE THE VEHICLE IS STABLE.**

# DORSODURO 1200 - DORSODURO 1200 ABS - ATC



**Chap. 04  
Maintenance**



## Engine oil level check (04\_01, 04\_02, 04\_03)

Check the engine oil level frequently.

### NOTE

**CARRY OUT MAINTENANCE OPERATIONS AT HALF THE INTERVALS SPECIFIED IF THE VEHICLE IS USED IN PARTICULAR RAINY OR DUSTY CONDITIONS, OFF ROAD OR FOR TRACK USE.**



**ENGINE OIL LEVEL MUST BE CHECKED WHEN THE ENGINE IS WARM.**

**IF YOU CHECK LEVEL WHEN THE ENGINE IS COLD, OIL LEVEL COULD TEMPORARILY DROP BELOW THE "MIN" MARK.**

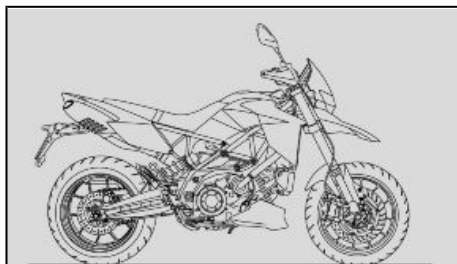
**THIS SHOULD NOT BE CONSIDERED A PROBLEM PROVIDED THAT THE ALARM WARNING LIGHT AND THE ENGINE OIL PRESSURE ICON ON THE DISPLAY DO NOT TURN ON SIMULTANEOUSLY.**

### CAUTION

**DO NOT LET THE ENGINE IDLE WITH THE VEHICLE AT STANDSTILL TO WARM UP THE ENGINE AND OBTAIN THE OPERATING TEMPERATURE OF ENGINE OIL.**

**OIL IS BEST CHECKED AFTER A TRIP OR AFTER TRAVELLING APPROXIMATELY 15 km (10 mi), OUT OF TOWN (ENOUGH TO WARM UP ENGINE OIL TO OPERATING TEMPERATURE).**





04\_02

- Switch off the engine and wait at least five minutes to allow the lubricant to drain back into the sump.
- Keep the vehicle upright on a level surface and with both wheels on the ground.
- Check the oil level from the sight glass on the clutch case.

**MAX** = maximum level.

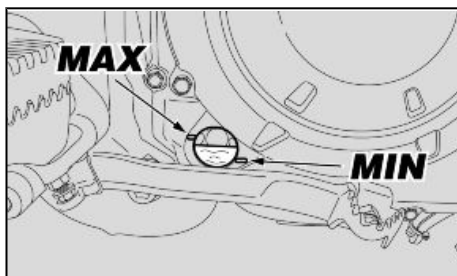
MIN = minimum level

The difference between the "**MAX**" and "**MIN**" marks is approx. 460 cm<sup>3</sup> (28.07 cu.in).

- The oil level is correct when it is close to the "**MAX**" mark.

#### CAUTION

**THE VEHICLE MUST BE UNLOADED.**



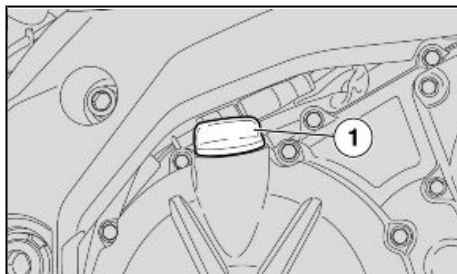
04\_03

#### Engine oil top-up (04\_04)

#### CAUTION



**DO NOT GO BEYOND THE "MAX" AND BELOW THE "MIN" LEVEL MARK TO AVOID SEVERE ENGINE DAMAGE.**



04\_04

**Fill with engine oil as required:**

- Unscrew and remove the cap (1).

**When using a funnel or any other element, make sure it is perfectly clean.**



**DO NOT ADD ADDITIVES OR OTHER SUBSTANCES TO THE OIL.**

#### **CAUTION**

**USE OIL WITH THE SPECIFICATIONS INDICATED IN THE RECOMMENDED PRODUCTS TABLE GIVEN AT THE END OF THE MANUAL.**

- Top-up the oil in the reservoir until you reach the correct level.

## **Engine oil change**

#### **CAUTION**

**TO CHANGE THE ENGINE OIL, PLEASE CONTACT AN Official aprilia Dealer. IF YOU ARE ADEQUATELY TRAINED AND EXPERIENCED, REFER TO THE INSTRUCTIONS IN THE WORKSHOP BOOKLET AVAILABLE ALSO AT ANY DEALER.**

## **Engine oil filter replacement**

#### **CAUTION**

**TO REMOVE AND CLEAN THE ENGINE OIL FILTER, PLEASE CONTACT AN Official aprilia Dealer. IF YOU ARE ADEQUATELY TRAINED AND EXPERIENCED,**

REFER TO THE INSTRUCTIONS IN THE WORKSHOP BOOKLET AVAILABLE ALSO AT ANY DEALER.

## Tyres

This vehicle is fitted with tyres without inner tubes (Tubeless).



**CHECK TYRE INFLATION PRESSURE REGULARLY AT AMBIENT TEMPERATURE.**

**MEASUREMENTS MAY BE INCORRECT IF TYRES ARE WARM.**

**CHECK PRESSURE MAINLY BEFORE AND AFTER LONG TRIPS.**

**IF THE TYRE PRESSURE IS TOO HIGH, UNEVENNESS IN THE ROAD SURFACE WILL NOT BE CUSHIONED AND WILL BE TRANSMITTED TO THE HANDLEBAR, RESULTING IN AN UNPLEASANTLY HARSH RIDE AND POOR ROAD HOLDING, ESPECIALLY WHEN CORNERING.**

**AN UNDERINFLATED TYRE, ON THE OTHER HAND, WILL EXTEND THE CONTACT PATCH TO INCLUDE A LARGER PORTION OF THE TYRE SIDEWALLS. WHEN THIS IS THE CASE, THE TYRE MIGHT SLIP ON OR BECOME DETACHED FROM THE WHEEL RIM, LEADING TO LOSS OF CONTROL OVER THE VEHICLE.**

**TYRES MAY EVEN DETACH FROM THE WHEEL RIMS UNDER VERY HARD BRAKING.**

**THE VEHICLE MAY EVEN SKID IN A BEND.**

**INSPECT TREAD SURFACE AND CHECK IT FOR WEAR. BADLY WORN TYRES MAY COMPROMISE TRACTION AND HANDLING.**

**REPLACE TYRES WHEN WORN OR IF THERE IS A PUNCTURE IN THE TREAD AREA BIGGER THAN 5 mm (0.197 in).**

**BALANCE WHEELS AFTER A TYRE IS MENDED. USE ONLY TYRE SIZES INDICATED BY THE MANUFACTURER.**

**CHECK THAT THE INFLATION VALVES HAVE THEIR CAPS FITTED TO AVOID UNEXPECTED FLAT TYRES. REPLACEMENT, REPAIR, MAINTENANCE AND BALANCING OPERATIONS ARE HIGHLY IMPORTANT AND SO THEY SHOULD BE CARRIED OUT USING THE SPECIFIC TOOLS AND WITH THE ADEQUATE KNOWLEDGE.**

**IT IS THEREFORE ESSENTIAL TO TAKE YOUR VEHICLE TO AN Official Aprilia Dealer OR SPECIALISED TYRE WORKSHOP TO CARRY OUT THE OPERATIONS ABOVE. NEW TYRES MAY BE COATED WITH A SLIPPERY COATING: RIDE WITH CAUTION DURING THE FIRST KILOMETRES. DO NOT APPLY UNSUITABLE LIQUIDS ON TYRES. WHEN TYRES ARE OLD, THE MATERIAL MAY HARDEN AND NOT PROVIDE ADEQUATE ROAD HOLDING, EVEN IF TYRES ARE STILL WITHIN THE WEAR LIMIT.**

**SHOULD THIS OCCUR, REPLACE THE TYRES.**

**Minimum tread depth:**

front and rear 2 mm (0.079 in) (USA 3 mm - 0.118 in) or more if so required by applicable legislation in the country where the vehicle is used.

## **Spark plug dismantlement**

### **CAUTION**

**TO REMOVE, CHECK, CLEAN AND REPLACE SPARK PLUGS, PLEASE CONTACT AN Official Aprilia Dealer. IF YOU HAVE SUFFICIENT EXPERIENCE, FOLLOW THE INSTRUCTIONS IN THIS WORKSHOP BOOKLET, WHICH IS AVAILABLE AT ANY DEALER.**

## Removing the air filter

### CAUTION

TO REMOVE, CHECK AND REPLACE THE AIR FILTER, PLEASE CONTACT AN Official Aprilia Dealer. IF YOU ARE ADEQUATELY TRAINED AND EXPERIENCED, REFER TO THE INSTRUCTIONS IN THIS WORKSHOP BOOKLET AVAILABLE ALSO AT ANY DEALER.

## Cooling fluid level (04\_05, 04\_06)



DO NOT USE YOUR MOTORCYCLE IF THE COOLANT LEVEL IS BELOW THE MINIMUM LEVEL MARKED «MIN».

### CAUTION



COOLANT IS TOXIC IF INGESTED; CONTACT WITH YOUR EYES OR SKIN MAY CAUSE IRRITATION. IF THE FLUID GETS IN CONTACT WITH THE EYES OR SKIN, RINSE REPEATEDLY WITH PLENTY OF WATER AND SEEK MEDICAL ADVICE. IF SWALLOWED, INDUCE VOMITING, RINSE MOUTH AND THROAT WITH PLENTY OF WATER AND SEEK MEDICAL ADVICE IMMEDIATELY.

### CAUTION



TAKE CARE NOT TO POUR COOLANT ONTO HOT ENGINE OR EXHAUST SYSTEM COMPONENTS; THE FLUID MAY CATCH FIRE AND BURN WITH INVISIBLE FLAMES. WHEN CARRYING OUT MAINTENANCE OPERATIONS, IT IS ADVISA-

BLE TO WEAR LATEX GLOVES. CONTACT AN Official APRILIA Dealer FOR REPLACEMENT.

DO NOT DISPOSE OF THE FLUID INTO THE ENVIRONMENT.

KEEP OUT OF THE REACH OF CHILDREN

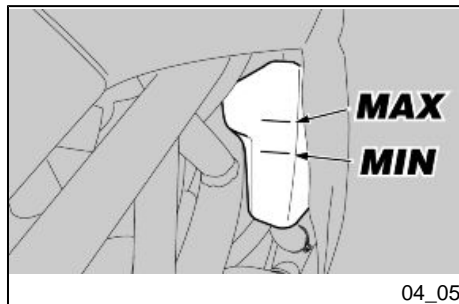
DO NOT REMOVE THE COVER OF THE EXPANSION TANK (1) WHEN THE ENGINE IS HOT AS THE COOLANT IS UNDER PRESSURE AND AT A HIGH TEMPERATURE. CONTACT WITH SKIN OR CLOTHES MAY CAUSE SERIOUS BURNS AND/OR INJURIES.

#### NOTE

TAKE YOUR VEHICLE TO AN Official APRILIA Dealer TO HAVE THE COOLANT CHANGED.

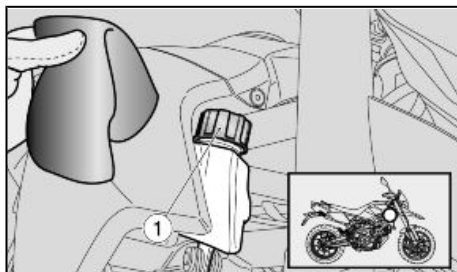
#### WARNING

WAIT FOR THE ENGINE TO COOL DOWN BEFORE CHECKING OR TOPPING-UP THE COOLANT LEVEL.



#### CHECK AND TOPPING-UP

- Shut off the engine and wait until it cools off.
- Keep the vehicle upright and with the two wheels on the ground.
- Turn the handlebar to the left, keeping the vehicle upright.
- Make sure that the coolant level in the expansion tank is between the "MAX" ("MAX"= maximum level) and "MIN" ("MIN"= minimum level) reference marks



04\_06

**Otherwise:**

- Remove the filler cap (1).
- Top-up with recommended coolant until the coolant level is near the "**MAX**" reference mark. Do not exceed this level or the coolant will spill out when the engine is turning.
- Refit and lock the filler cap (1).

**CAUTION**

**IN THE EVENT OF COOLANT CONSUMPTION OR IF THE RESERVOIR IS EMPTY, CHECK FOR LEAKS IN THE CIRCUIT.**

**Checking the brake oil level (04\_07, 04\_08)**

For the front brake:

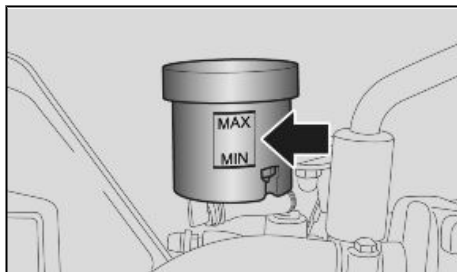
- rest the vehicle on its stand and turn the handlebar so that the fluid in the reservoir is parallel to the reservoir edge.
- Check that the fluid in the reservoir is above the "**MIN**" reference mark.

For the rear brake:

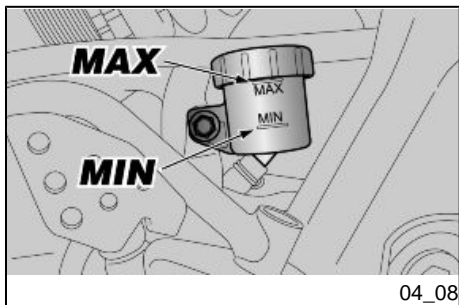
- keep the vehicle upright and check that the fluid in the reservoir is parallel to the reservoir edge.
- Make sure that the fluid level in the reservoir is above the "**MIN**" mark:

Top up if the fluid does not reach at least the "**MIN**" reference mark.

- Check brake pads and disc for wear
- If the pads and/or the disc do not need replacing, top up the fluid.



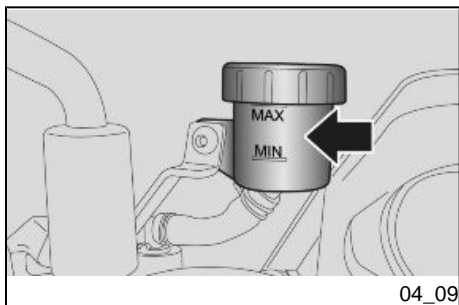
04\_07



## Braking system fluid top up

### CAUTION

**TO HAVE THE BRAKING SYSTEM FLUID TOPPED-UP, PLEASE CONTACT AN Official Aprilia Dealer. IF YOU ARE SUITABLY AND EXPERIENCED, FOLLOW THE INSTRUCTIONS IN THE WORKSHOP BOOKLET, WHICH IS AVAILABLE FROM ANY DEALER.**



## Checking clutch fluid (04\_09)

- Rest the vehicle on its stand.
- Turn the handlebar so that the fluid in the reservoir is parallel to the reservoir edge.
- Make sure that the fluid level in the reservoir is above the "MIN" reference mark:

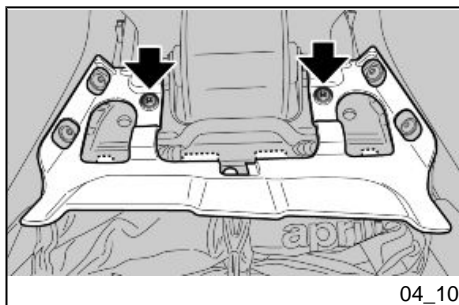
Top-up if the fluid does not reach at least the "MIN" reference mark.



## Topping up clutch fluid

### CAUTION

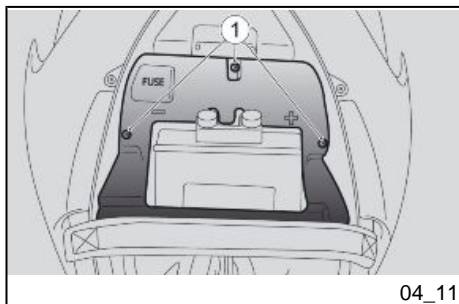
FOR CLUTCH FLUID TOP-UP, PLEASE CONTACT AND Official Aprilia Dealer. IF YOU ARE ADEQUATELY TRAINED AND EXPERIENCED, REFER TO THE INSTRUCTIONS IN THIS WORKSHOP BOOKLET AVAILABLE ALSO AT ANY DEALER.



04\_10

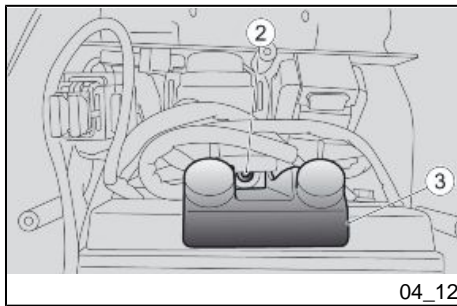
## Battery removal (04\_10, 04\_11, 04\_12, 04\_13)

- Make sure that the ignition switch is set to "OFF".
- Remove the saddle.
- Unscrew and remove the two screws.
- Remove the guard from the back, taking the four fixing points off (dotted in the figure).
- Remove the tool kit.

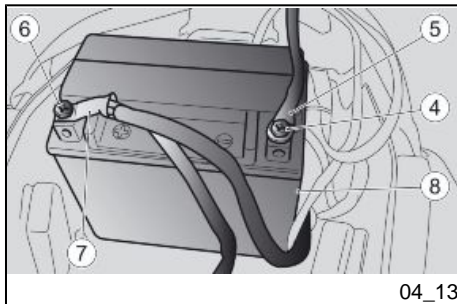


04\_11

- Undo and remove the three screws (1).
- Take the battery protection off.



- Undo and remove the screw (2).
- Remove the battery locking bracket (3).



- Lift the battery (8).
- Undo and remove the screw (4) of the negative terminal (-).
- Move the negative lead (5) aside.
- Undo and remove the screw (6) of the positive terminal (+).
- Move the positive lead (7) aside.
- Hold the battery (8) firmly and lift it out of its compartment.
- Put the battery (8) away on a level surface in a cool and dry place.
- Refit the saddle.

#### CAUTION

**WHEN REFITTING THE BATTERY, MAKE SURE IT IS CORRECTLY POSITIONED AND POLES ARE NOT INVERTED.**

#### CAUTION

**UPON REFITTING, CONNECT THE LEAD TO THE POSITIVE TERMINAL (+) FIRST AND AFTERWARDS THE LEAD TO THE NEGATIVE TERMINAL (-).**



**CHECK THAT THE BATTERY LEADS AND TERMINALS ARE:**

- IN GOOD CONDITION (NOT CORRODED OR COVERED BY DEPOSITS);
- COVERED BY NEUTRAL GREASE OR PETROLEUM JELLY.

## Checking the electrolyte level

### WARNING

**THIS VEHICLE IS FITTED WITH A MAINTENANCE-FREE BATTERY AND DOES NOT NEED ANY INTERVENTION, EXCEPT FOR SPORADIC CHECKS AND RECHARGE.**

## Charging the battery

- Remove the battery.
- Get an adequate battery charger.
- Set the battery charger for the recharge type indicated.
- Connect the battery to the battery charger.

### CAUTION



**WHEN RECHARGING OR USING THE BATTERY, BE CAREFUL TO HAVE THE ROOM ADEQUATELY AIRED. DO NOT BREATHE GASES RELEASED WHEN THE BATTERY IS RECHARGING.**

Switch on the battery charger.

### **Characteristic**

#### **RECHARGE MODES:**

Recharge - Ordinary

Electric Current - 1.0 A

Time - 8-10 hours

Recharge - Fast

Electric Current - 10 A

Time - 0.5 hours

## Long periods of inactivity



**IF THE VEHICLE IS OUT OF USE FOR MORE THAN TWENTY DAYS, DISCONNECT THE 30 A FUSE TO PREVENT BATTERY DETERIORATION CAUSED BY CURRENT CONSUMPTION BY THE MULTIFUNCTION COMPUTER.**

### CAUTION

**REMOVING THE 30 A FUSES RESETS THESE FUNCTIONS: DIGITAL CLOCK, TRIP INFORMATION AND CHRONOMETER TIMES.**

If the vehicle is inactive longer than fifteen days, it is necessary to recharge the battery to avoid sulphation.

- Remove the battery.

In winter or when the vehicle is out of use for prolonged periods, check charge level frequently (about once a month) to prevent deterioration.

- Recharge it fully with an ordinary charge.

If the battery is still on the vehicle, disconnect the cables from the terminals.

### NOTE

**THE FIRST TIME THE ENGINE IS STARTED AFTER RECONNECTING THE BATTERY LEADS, WAIT 20 SECONDS BETWEEN THE MOMENT THE KEY IS SET TO "KEY ON" AND THE MOMENT THE STARTER BUTTON CAN BE PUSHED.**

**THE ENGINE WILL NOT START IF START-UP IS ATTEMPTED BEFORE THE PRE-SET 20 SECONDS ELAPSE.**

### **Fuses (04\_14, 04\_15, 04\_16, 04\_17)**

Check fuses in case of failure or irregular functioning of an electrical component or engine starting failure.

Check the auxiliary 15A fuses first, then the main 30A fuses.

#### **CAUTION**

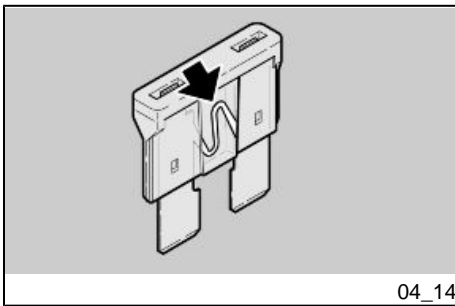


**DO NOT REPAIR FAULTY FUSES.**

**NEVER USE A FUSE THAT IS DIFFERENT THAN WHAT IS SPECIFIED TO PREVENT DAMAGES TO THE ELECTRICAL SYSTEM OR SHORT CIRCUITS, WITH THE RISK OF FIRE.**

#### **CAUTION**

**A FUSE THAT BLOWS FREQUENTLY MAY INDICATE A SHORT CIRCUIT OR OVERLOAD. IF THIS OCCURS, CONSULT AN APRILIA Official Dealer.**



04\_14

To check:

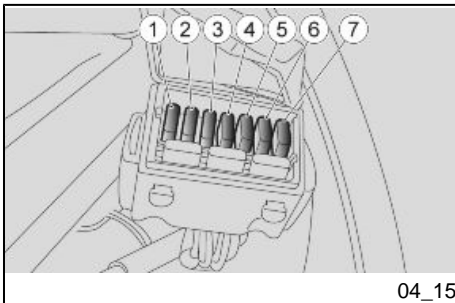
- Set the ignition switch to "OFF" to avoid an accidental short circuit.
- Open the cover of the secondary fuse box on the front left.
- Take out one fuse at a time and check if the filament is broken.
- Before replacing the fuse, find and solve, whenever possible, the problem that caused it to blow.
- If the fuse is damaged, replace it with one of the same current rating.
- To check the main fuses, located under the saddle, carry out the same operations described above for the secondary fuses.

#### NOTE

**IF THE SPARE FUSE IS USED, REPLACE IT WITH ONE OF THE SAME TYPE IN THE CORRESPONDING FITTING.**

#### CAUTION

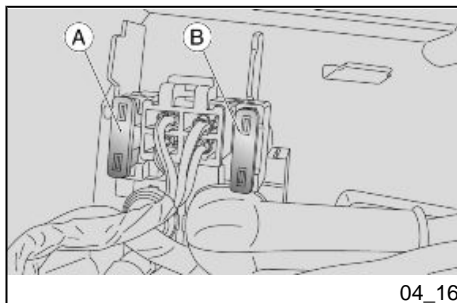
**REMOVING THE 30 A FUSES RESETS THESE FUNCTIONS: DIGITAL CLOCK, TRIP INFORMATION AND CHRONOMETER TIMES.**



04\_15

#### SECONDARY FUSES (front left, above the water radiator)

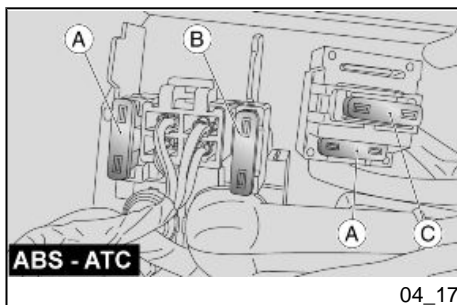
- 1 - Light logic relay, Recovery logic relay, Stop, Horn, Daylight running lights, License plate light (10 A).
  - 2 - Permanent instrument panel positive (7.5 A).
  - 3 - Live positive leads to the ECU (15 A).
  - 4 - Permanent positive leads to the ECU (7.5 A).
  - 5 - Coils, Petrol pump, Injectors (15 A).
  - 6 - Low beam/high beam light logic (15 A).
  - 7 - Fans (15 A).
- Spare fuses (7.5 - 10 - 15 A)



### MAIN FUSES - version without ABS (under the saddle, remove the battery protection)

A - Spare fuse (30 A)

B - Battery recharge, fan relay, live positive, lambda probe (30 A)



### MAIN FUSES - version without ABS - ATC (under the saddle, remove the battery protection)

A - Spare fuses (30 A - 20 A)

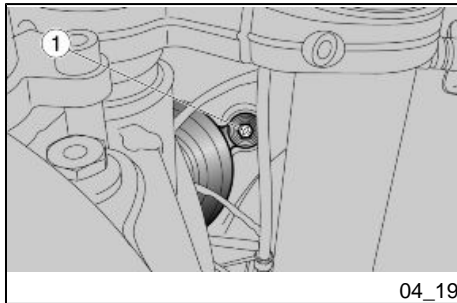
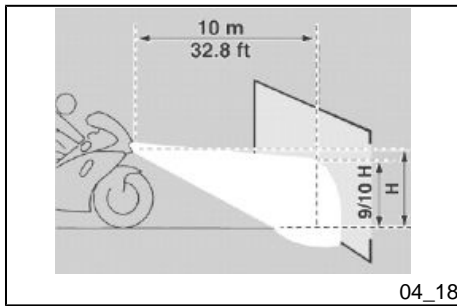
B - Battery recharge, fan relay, live positive, lambda probe, ABS - ATC live positive (30 A)

C - Permanent ABS - ATC positive (20 A)

## Lamps

### CAUTION

**TO REMOVE, CHECK AND REPLACE THE BULB, PLEASE CONTACT AN Official Aprilia Dealer. IF YOU ARE ADEQUATELY TRAINED AND EXPERIENCED, REFER TO THE INSTRUCTIONS IN THIS WORKSHOP BOOKLET AVAILABLE ALSO AT ANY DEALER.**



## Headlight adjustment (04\_18, 04\_19, 04\_20)

### NOTE

**IN COMPLIANCE WITH LOCAL LEGISLATION, SPECIFIC PROCEDURES MUST BE FOLLOWED WHEN ALIGNING THE LIGHTS.**

EU: To quickly and easily check the alignment of the front light, place the vehicle on a level surface 10 m (32.8 ft) away from a vertical wall. Turn on the dipped beam light, sit on the vehicle and check that the light beam projected onto the wall is a little below the level of the headlight (about 9/10 of the total height).

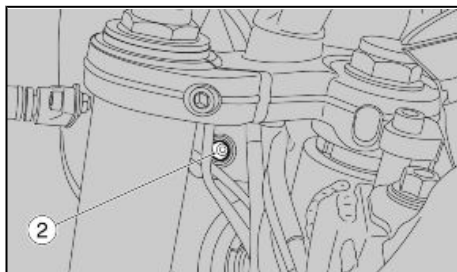
### To carry out vertical adjustment of the light beam:

- Rest the vehicle on its stand.
- Working from the front rear side of the windshield, use a short crosshead screwdriver to operate on the specific screw (1). SCREW it (clockwise) to raise the light beams; UNDO the screw (anticlockwise) to lower the light beam.

### NOTE

**CHECK THAT THE LIGHT BEAM VERTICAL DIRECTION IS CORRECT.**





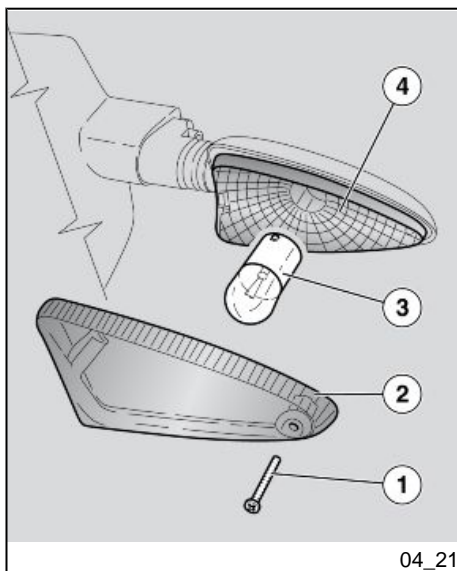
04\_20

#### In order to carry out horizontal adjustment of the light beam:

- Rest the vehicle on its stand.
- Working from the left rear side of the windshield, use a short crosshead screwdriver on the specific screw (2). **SCREW** it (clockwise) to move the light beam to the left; **UNDO** it (anticlockwise) to move the light beam to the right.

#### NOTE

**CHECK THAT THE LIGHT BEAM HORIZONTAL DIRECTION IS CORRECT.**



04\_21

#### Front direction indicators (04\_21)

- Rest the vehicle on its stand.
- Loosen and remove screw (1).
- Remove glass (2).
- Press bulb (3) slightly and turn it anticlockwise.
- Pull the bulb (3) out of its fitting.
- Insert a bulb of the same type adequately.

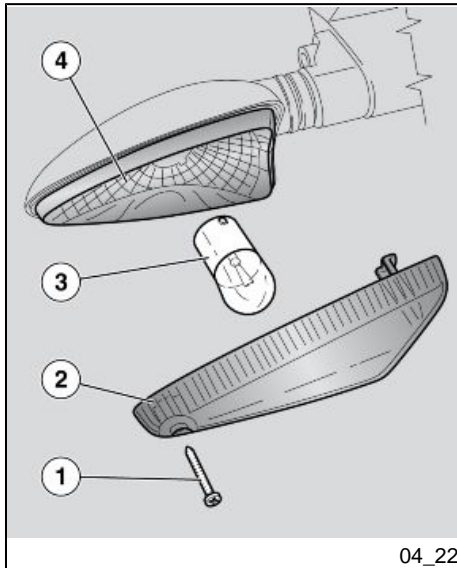
#### WARNING

**IF PARABOLE (4) STICKS OUT OF ITS FITTING, INSERT IT AGAIN PROPERLY.**

## Rear optical unit

### CAUTION

**TO REMOVE, CHECK AND REPLACE THE BULB, PLEASE CONTACT AN Official Aprilia Dealer. IF YOU ARE ADEQUATELY TRAINED AND EXPERIENCED, REFER TO THE INSTRUCTIONS IN THIS WORKSHOP BOOKLET AVAILABLE ALSO AT ANY DEALER.**



## Rear turn indicators (04\_22)

- Rest the vehicle on its stand.
- Loosen and remove screw (1).
- Remove glass (2).
- Press bulb (3) slightly and turn it anticlockwise.
- Pull the bulb (3) out of its fitting.
- Insert a bulb of the same type adequately.

### WARNING

**IF PARABOLE (4) STICKS OUT OF ITS FITTING, INSERT IT AGAIN PROPERLY.**

## Number plate light

### CAUTION

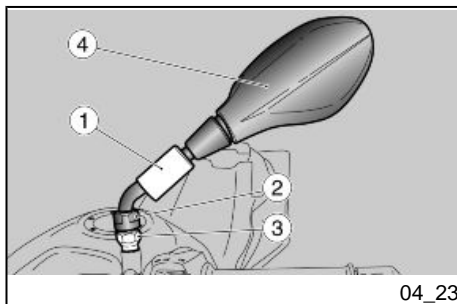
TO REMOVE, CHECK AND REPLACE THE BULB, PLEASE CONTACT AN Official Aprilia Dealer. IF YOU ARE ADEQUATELY TRAINED AND EXPERIENCED, REFER TO THE INSTRUCTIONS IN THIS WORKSHOP BOOKLET AVAILABLE ALSO AT ANY DEALER.

## Rear-view mirrors (04\_23, 04\_24)

- Park the vehicle on its centre stand on safe and level ground.
- Move the protection casing (1).



**HOLD THE REAR-VIEW MIRROR (4) TO AVOID DROPPING IT BY ACCIDENT.**

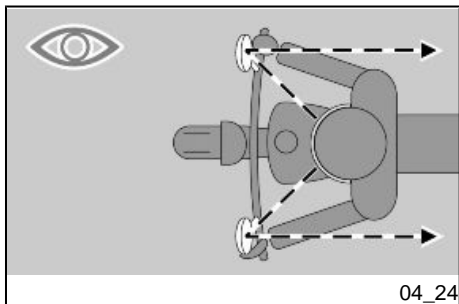


- Keep the screw (2) blocked and completely unscrew the nut (3).



**HANDLE PLASTIC AND PAINTED COMPONENTS WITH CARE, DO NOT SCRATCH OR SPOIL THEM.**

- Remove the rear-view mirror (4).

**CAUTION**

REPEAT THE PROCEDURE TO REMOVE THE OTHER MIRROR.



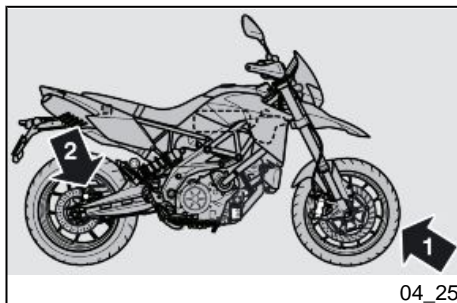
**AFTER REFITTING, ADJUST THE REAR-VIEW MIRRORS CORRECTLY AND TIGHTEN THE NUTS IN ORDER TO ENSURE STABILITY.**

**After refitting:**

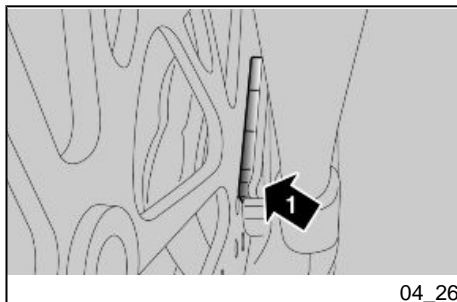
- Adjust the rear-view mirror angle correctly.

**Front and rear disc brake (04\_25, 04\_26, 04\_27)**

**THOROUGHLY DRY THE BRAKE DISCS WHEN YOU HAVE FINISHED CLEANING TO AVOID THE PADS STICKING TO THE DISCS.**

**CAUTION**

**CHECK BRAKE PADS FOR WEAR MAINLY BEFORE EACH RIDE.**

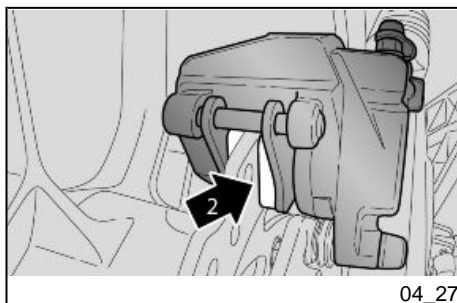


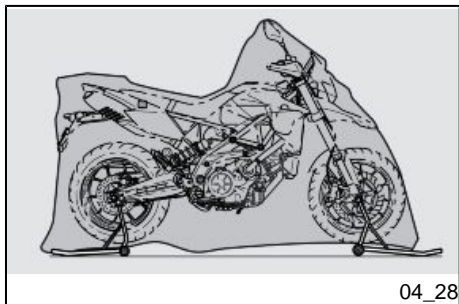
**To perform a quick pad wear check:**

- Rest the vehicle on its stand.
- Carry out a visual inspection of brake disc and pads as follows:
  - at the front, for the front brake callipers (1);
  - on the right side of the vehicle, look from above downwards, for the rear brake calliper (2).

**CAUTION**

**EXCESSIVE WEAR OF THE FRICTION MATERIAL MAKES THE PAD METAL SUPPORT GET INTO CONTACT WITH THE DISC, WHICH RESULTS IN A METALLIC NOISE AND SPARKS IN THE CALLIPER; THEREFORE, BRAKING EFFICIENCY AND DISC SAFETY AND INTEGRITY ARE AT RISK.**





If the friction material thickness (even of one front or rear pad) is reduced to a value of about **1.5 mm (0.06 in)** (or even if one of the wear indicators is not very visible), contact an Official **Aprilia** Dealer to have all the calliper pads replaced.

### Periods of inactivity (04\_28)

Take some measures to avoid the side effects of not using the scooter. Besides, it is necessary to carry out general repairs and checks before garaging the motorcycle as one can forget to do so afterwards.

Proceed as follows:

- Remove the battery.
- Wash and dry the vehicle.
- Polish the painted surfaces.
- Inflate the tyres.
- Set the vehicle in a room with no heating or humidity, with minimum temperature variations and not exposed to sun rays.
- Wrap and tie a plastic bag around the exhaust pipe opening to keep moisture out.

#### NOTE

**PLACE A SUITABLE SUPPORT UNDER THE VEHICLE TO KEEP BOTH WHEELS OFF THE GROUND.**

- Put the vehicle on the front stand (optional) and on the back stand (optional).
- Cover the vehicle (do not use plastic or waterproof materials).

#### After storage

**NOTE**

**TAKE THE PLASTIC BAGS OFF THE EXHAUST PIPE OPENING.**

- Uncover and clean the vehicle.
- Check the battery for correct charge and install it.
- Refill the fuel tank.
- Carry out the pre-ride checks.

**CAUTION**

**TEST RIDE THE VEHICLE AT MODERATE SPEED FOR A FEW KILOMETRES IN AN AREA AWAY FROM TRAFFIC.**

**Cleaning the vehicle (04\_29, 04\_30, 04\_31)**

**Clean the motorcycle frequently if exposed to adverse conditions, such as:**

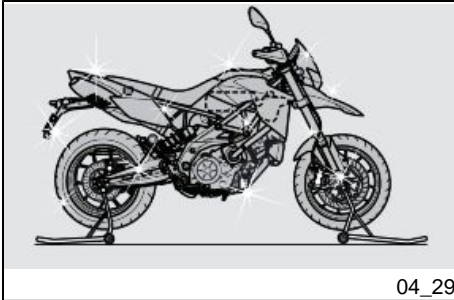
- Air pollution (cities and industrial areas).
- Salinity and humidity in the atmosphere (seashore areas, hot and wet weather).
- Special environmental/seasonal conditions (use of salt, anti-icing chemical products on the roads in winter).
- Always clean off any smog and pollution residue, tar stains, insects, bird droppings, etc. from the bodywork.
- Avoid parking the vehicle under trees. During some seasons, resins, fruits or leaves containing aggressive chemical substances that may damage the paintwork may fall from trees.
- Clean the instrument panel using a soft damp cloth.

**CAUTION**

**BEFORE WASHING THE VEHICLE, COVER THE ENGINE AIR INTAKES AND THE EXHAUST PIPES.**

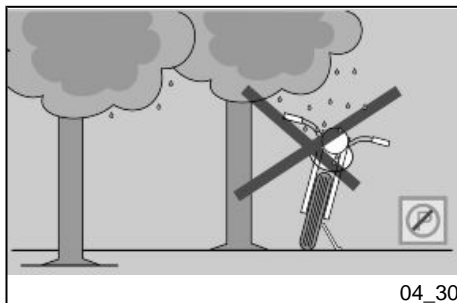
**CAUTION**

**AFTER CLEANING YOUR MOTORCYCLE, BRAKING EFFICIENCY MAY BE TEMPORARILY AFFECTED DUE TO THE PRESENCE OF WATER ON THE FRICTION SURFACES OF THE BRAKING CIRCUIT. ALLOW LONGER BRAKING DISTANCES TO PREVENT ACCIDENTS. BRAKE REPEATEDLY TO RESTORE NORMAL OPERATION. CARRY OUT THE PRE-RIDE CHECKS.**

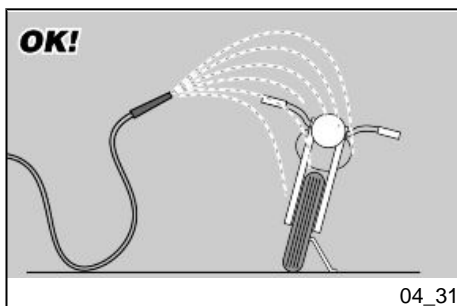


**THOROUGHLY DRY THE BRAKE DISCS WHEN YOU HAVE FINISHED CLEANING TO AVOID THE PADS STICKING TO THE DISCS.**





04\_30



04\_31

To clean off dirt and mud deposited from painted surfaces, soften caked dirt with a low-pressure water jet. Sponge off using a car body sponge soaked in a car body shampoo and water solution (2 - 4% parts of shampoo). Then rinse with plenty of water, and dry with a chamois leather. To clean the engine outer parts, use degreasing detergent, brushes and old cloths. Anodised or painted aluminium parts such as forks, wheel rims, frame, footrests etc. should be washed using water and mild soap. Using aggressive detergents may damage the surface treatment of these components.



**TO CLEAN THE HEADLIGHTS USE A SPONGE SOAKED IN WATER AND MILD DETERGENT, RUBBING THE SURFACE GENTLY AND RINSING FREQUENTLY WITH PLENTY OF WATER. REMEMBER TO CLEAN THE VEHICLE CAREFULLY BEFORE APPLYING SILICON WAX POLISH. DO NOT POLISH MATT-PAINTED SURFACES WITH POLISHING PASTE. THE VEHICLE SHOULD NEVER BE WASHED IN DIRECT SUNLIGHT, ESPECIALLY DURING SUMMER, OR WITH THE BODYWORK STILL HOT AS THE CAR SHAMPOO CAN DAMAGE THE PAINT-WORK IF IT DRIES BEFORE BEING RINSED OFF.**

#### CAUTION



**DO NOT USE WATER (OR LIQUIDS) AT TEMPERATURES OVER 40°C (104°F) WHEN CLEANING THE VEHICLE PLASTIC PARTS. DO NOT AIM HIGH PRESSURE AIR/WATER JETS OR STEAM JETS DIRECTLY TO THE FOLLOWING PARTS: WHEEL HUBS, CONTROLS ON THE RIGHT AND LEFT SIDE OF THE HANDLEBAR, BEARINGS, BRAKE PUMPS, INSTRUMENTS AND GAUGES, EXHAUST SILENCER, IGNITION SWITCH/STEERING LOCK. DO NOT USE ALCOHOL OR SOLVENTS TO CLEAN ANY RUBBER OR PLASTIC SADDLE COMPONENTS: USE WATER AND MILD SOAP.**

#### CAUTION

**DO NOT USE SOLVENTS OR PETROL BY-PRODUCTS (ACETONE, TRICHLOROETHYLENE, TURPENTINE, PETROL, THINNERS) TO CLEAN THE SADDLE. USE**

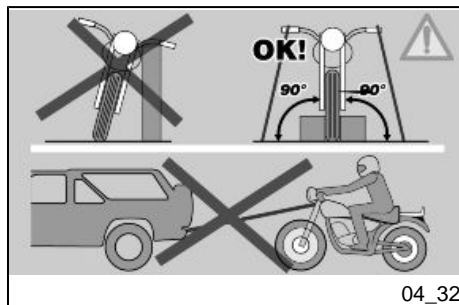
**INSTEAD DETERGENTS WITH SURFACE ACTIVE AGENTS NOT EXCEEDING 5% (NEUTRAL SOAP, DEGREASING DETERGENTS OR ALCOHOL).**

**DRY THE SADDLE WELL AFTER CLEANING.**

**CAUTION**



**DO NOT APPLY PROTECTIVE WAX ON THE SADDLE AS IT MAY BECOME SLIPPERY.**



### **Transport (04\_32)**

Before transporting the vehicle, empty the fuel tank well and make sure it is perfectly dry.

During transport, the vehicle must be well anchored and upright, and first gear must be engaged to avoid fuel and oil leaks.

**IN CASE OF FAILURE, DO NOT HAVE THE VEHICLE TOWED. ASK FOR ROAD ASSISTANCE SERVICE.**

### **Transmission chain**



**DO NOT ALTER THE FINAL DRIVE RATIO 16/40 OR THE NUMBER OF CHAIN LINKS (108).**

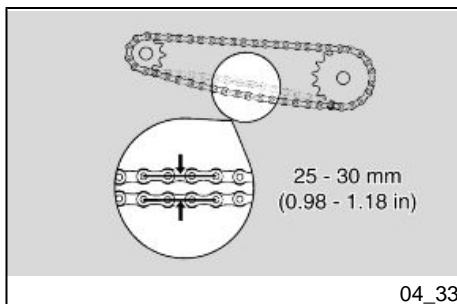
## Characteristic

### Final drive gear ratio

16/40

### Type

Endless (without master link) and with sealed links. No. of links 108



## Chain backlash check (04\_33)

### To check the clearance:

- Shut off the engine.
- Rest the vehicle on its stand.
- Engage neutral gear.
- Check that the vertical oscillation at a point between the pinion and the crown on the lower branch of the chain is approx. **25 - 30 mm (0.98 - 1.18 in)**.
- Move the vehicle forward so as to check the chain vertical oscillation in other positions too. clearance should remain constant at all wheel rotation phases.

If clearance is uniform but over **30 mm (1.18 in)** or below **25 mm (0.98 in)**, adjustment is necessary.

### CAUTION

**IF CLEARANCE IS GREATER AT SOME POSITIONS, THIS MEANS THAT SOME CHAIN LINKS ARE FLATTENED OR JAMMED.**

**TO AVOID RISK OF SEIZURE, LUBRICATE THE CHAIN ON A REGULAR BASIS.**

## Chain backlash adjustment

### CAUTION

**TO ADJUST THE CHAIN BACKLASH, PLEASE CONTACT AN Official Aprilia Dealer. IF YOU ARE ADEQUATELY TRAINED AND EXPERIENCED, REFER TO**

**THE INSTRUCTIONS IN THIS WORKSHOP BOOKLET AVAILABLE ALSO AT ANY DEALER.**

### **Checking wear of chain, front and rear sprockets**

Also check the following parts and make sure that the chain, pinion and sprocket do not have:

- Damaged rollers.
- Loosened pins.
- Dry, rusty, flattened or jammed chain links.
- Excessive wear.
- Missing sealing rings.
- Excessively worn or damaged pinion or sprocket teeth.

#### **CAUTION**

**IF THE CHAIN ROLLERS ARE DAMAGED, THE PINS ARE LOOSENED AND/OR THE SEAL RINGS ARE MISSING OR DAMAGED, THE WHOLE CHAIN APPARATUS (PINION, SPROCKET AND CHAIN) SHOULD BE REPLACED.**

#### **CAUTION**

**LUBRICATE THE CHAIN ON A REGULAR BASIS, PARTICULARLY IF YOU FIND DRY OR RUSTY PARTS. FLATTENED OR JAMMED CHAIN LINKS SHOULD BE LUBRICATED AND GOOD OPERATING CONDITIONS RESTORED. IF REPAIR IS NOT POSSIBLE, CONTACT AN Official Aprilia Dealer TO HAVE IT REPLACED.**

### **Chain lubrication and cleaning**

Never wash the chain with high pressure air/water jets or steam jets or highly flammable solvents.

- Wash the chain with fuel oil or kerosene. Maintenance operations should be more frequent if there are signs of quick rust.

Lubricate the chain whenever necessary.

- After washing and drying the chain, lubricate it with spray grease for sealed chains.



**THE TRANSMISSION CHAIN HAS RUBBER O-RINGS BETWEEN THE SIDE PLATES OF THE CHAIN ITSELF THAT ARE USED TO HOLD THE GREASE. UT-MOST ATTENTION IS REQUIRED WHEN ADJUSTING, LUBRICATING, WASHING OR REPLACING THE CHAIN.**

**CHAIN LUBRICANTS AVAILABLE ON THE MARKET CAN CONTAIN SUBSTANCES THAT DAMAGE THE CHAIN'S RUBBER O-RINGS.**

**NEVER USE THE VEHICLE JUST AFTER LUBRICATING THE CHAIN, AS THE LUBRICANT WOULD BE SPRAYED OUTWARD AND SPREAD OUT IN THE SURROUNDING AREA.**



# DORSODURO 1200 - DORSODURO 1200 ABS - ATC



**Chap. 05**  
**Technical data**

### **DIMENSIONS**

Max. length	2248 mm (88.19 in)
Max. width (at hand guards)	925 mm (36.42 in)
Max. height	1205 mm (47.44 in)
Saddle height	870 mm (34.25 in)
Wheelbase	1528 mm (60.16 in)
Kerb weight	223 kg (492 lb)
Dry weight (unfuelled)	212 kg (467 lb)

### **ENGINE**

Model	M555M
Type	90° longitudinal V-twin, 4-stroke, 4 valves per cylinder, 2 overhead camshafts.
No. of cylinders	2
Total engine capacity	1197 cm <sup>3</sup> (73.05 cu.in)
Bore / stroke	106 x 67.8 mm (4.17 x 2.67 in)
Valve clearance at intake	0.15 - 0.20 mm (0.0059 - 0.0079 in)



Outlet valve clearance	0.20 - 0.25 mm (0.0079 - 0.0098 in)
Compression ratio	12.0 : 1
Electric	Electric starter
Engine idle speed	1400 ± 100 rpm
Clutch	Multiple-disk, oil-bathed clutch with control on the left side of the handlebar
Lubrication system	Wet crankcase. Pressure system regulated by a trochoidal pump with oil radiator.
Air filter	Sponge.
Cooling	Fluid

### **GEARBOX**

Type	Mechanical, 6 speeds with foot lever on the left hand side of the engine
------	--

### **CAPACITY**

Fuel tank (reserve included)	15 l (3.30 UK gal; 3.96 USgal)
Fuel reserve	2.5 l (0.55 UK gal; 0.66 US gal)
Engine oil	3.1 l (without oil filter change) (0.68 UK gal; 0.82 USgal) 3.35 l (with oil filter change) (0.74 UKgal; 0.88 USgal)
Coolant	2.5 l (0.55 UK gal; 0.66 USgal)
Seats	2
Maximum weight limit	416 kg (917 lb)

### **GEAR RATIOS**

Gear ratio	Gear primary drive 40/69
1st gear ratio	14/36 (secondary)
2nd gear ratio	17/32 (secondary)
3rd gear ratio	20/30 (secondary)
4th gear ratio	22/28 (secondary)
5th gear ratio	23/26 (secondary)

6th gear ratio	24/25 (secondary)
Final drive gear ratio	16/40

### **DRIVE CHAIN**

Type	Endless (without master link) and with sealed links. No. of links 108
Model	525 ZRPK

### **FUEL SYSTEM**

Type	Electronic injection (Multipoint)
Throttle valve diameter	Ø 57 mm (2.44 in)
Fuel	Premium unleaded petrol, minimum octane rating 95 (NORM) and 85 (NOMM)

### **CHASSIS**

Type	Component chassis (bolted). Die-cast aluminium plates and high-strength steel tubular chassis.
Steering inclination angle	27.3°
Trail	118 mm (4.65 in)

### **SUSPENSION**

Front	Sachs upside-down stanchions with adjustable hydraulic damping and 43mm (1.69 in) diameter stanchions
Travel	160 mm (6.3 in)
Rear	Oscillating swingarm with Sachs piggy-back single shock absorber and adjustable spring preloading, wheelbase and hydraulic compression and rebound damping.
Wheel travel	155 mm (6.1 in)

**BRAKES**

Front	Double floating disc, Ø 320 mm (12.60 in), radially-mounted calliper with four Ø 32 mm (1.26 in) pistons and two calliper pads
Rear	240 mm (9.45 in) diam. disc brake with 34 mm (1.34 in) diam. single piston calliper

**WHEEL RIMS**

Type	Light alloy rims with extractable bolt
Front	3.50 x 17"
Rear	6.00 x 17"

**TYRES**

Tyre type (standard)	PIRELLI CORSA III DUNLOP SPORTMAX QUALIFIER
Front tyre	120/70 ZR17" (58W)

Front tyre pressure	rider only: 2.3 bar (230 kPa) (33.36 PSI) rider + passenger: 2.4 bar (240 kPa) (34.81 PSI)
Rear tyre	180/55 ZR17" (73W)
Rear tyre pressure	rider only: 2.5 bar (250 kPa) (36.26 PSI) rider + passenger: 2.7 bar (270 kPa) (39.16 PSI)

### **SPARK PLUGS**

Standard spark plugs	NGK CR8EKB
Alternative spark plugs, for sports use or for prolonged high speed cruising fully loaded	NGK CR9EKB
Spark plug electrode gap	0.6 - 0.7 mm (0.024 - 0.028 in)
Resistance	5 kOhm

### **ELECTRICAL SYSTEM**

Battery	12 V - 12 Ah YTX 14 - BS
---------	--------------------------

Main fuses	30A
Auxiliary fuses	7.5 A; 10 A; 15 A
ABS - ATC fuses (if fitted)	20 A
Alternator (permanent magnet type)	13.5 V - 450 W at 6000 rpm

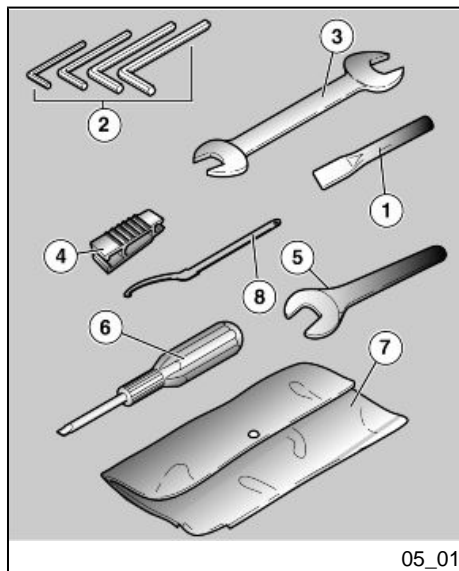
### **BULBS**

High beam light	12 V - 60 W H4
Low beam light	12 V - 50 W H4
Front daylight running light	12V - 6W H6
Turn indicator light	12V - 10W
Rear daylight running light / stop light	LED
License plate light	12V - 5W
Rpm indicator lighting	LED
Multifunction display lighting	LED

### **WARNING LIGHTS**

High beam light	LED
-----------------	-----

Right turn indicator	LED
Left turn indicator	LED
General warning	LED
Gear in neutral	LED
Side stand down	LED
Fuel reserve	LED
ABS	LED



### Kit equipment (05\_01)

The tools supplied are:

- Extension for wrench (1);
- 3; - 4; - 5; - 6 mm (- 0.12 - 0.16 - 0.20 - 0.24 in) L-shaped hex Allen keys (2) ;
- One 10 - 13 mm (0.39 - 0.51 in) double open ended spanner (3);
- Pliers to extract fuses (4);
- 19 mm (0.75 in) single open ended spanner (5);
- Double ended Phillips/hexagonal screwdriver (6);
- Toolkit pouch (7);
- Shock absorber ring nut adjustment wrench (8).

**Maximum weight allowed: 1.5 kg (3.3 lb)**



# DORSODURO 1200 - DORSODURO 1200 ABS - ATC



**Chap. 06**  
**Programmed**  
**maintenance**

## Scheduled maintenance table

Correct maintenance is fundamental for ensuring the longevity of your vehicle and maintaining optimum functionality and performance.

To this end, Aprilia offers a set of checks and maintenance services (at the owner's expense), that are summarised in the table shown on the following page. Any minor faults must be reported without delay to an **Authorised Aprilia Dealer or Sub-Dealer** without waiting until the next scheduled service to solve it.

All scheduled services must be carried out at the specified intervals and mileage, as soon as the predetermined mileage is reached. Carrying out scheduled services on time is essential for the validity of your warranty. For further information regarding Warranty procedures and "Scheduled Maintenance", please refer to the "Warranty Booklet".

### NOTE

**CARRY OUT MAINTENANCE OPERATIONS AT HALF THE INTERVALS SPECIFIED IF THE VEHICLE IS USED IN PARTICULAR RAINY OR DUSTY CONDITIONS, OFF ROAD OR FOR TRACK USE.**

I: INSPECT AND CLEAN, ADJUST, LUBRICATE OR REPLACE IF NECESSARY

C: CLEAN, R: REPLACE, A: ADJUST, L: LUBRICATE

- (1) Check and clean, adjust or replace if necessary every 1,000 km
- (2) Replace every 2 years
- (3) Replace every 4 years
- (4) At each engine start
- (5) Check every month
- (6) Check each time the rear tyre is replaced
- (7) Lubricate if you are riding in the rain, on wet roads or after the vehicle has been washed

**ROUTINE MAINTENANCE TABLE**

<b>km x 1,000</b>	<b>1</b>	<b>5</b>	<b>10</b>	<b>15</b>	<b>20</b>	<b>25</b>	<b>30</b>	<b>35</b>	<b>40</b>
Rear shock absorber					I				I
Spark plug					R				R
Drive chain (7)	I	I	I	I	I	I	I	I	I
Transmission cables and controls	I				I				I
Steering bearings and steering clearance	I				I				I
Wheel bearings					I				I
Control unit diagnosis	I				I				I
Brake discs	I				I				I
Air filter			I		R		I		R
Engine oil filter	R				R				R
Fork					I				I
Vehicle general operation	I				I				I
Valve clearance	I				A				A
Cooling system					I				I
Braking systems	I				I				I
Light circuit	I				I				I
Safety switches					I				I
Clutch control fluid (2)	I				I				I
Brake fluid (2)	I				I				I
Coolant (2)	I				I				I

km x 1,000	1	5	10	15	20	25	30	35	40
Fork oil (2)									
Engine oil	R				R				R
Light alignment					I				I
Fork oil guards					I				I
Flexible coupling (6)					I				I
Clutch lever pin (7)	L	L	L	L	L	L	L	L	L
Tyres - pressure/wear (5)	I	I	I	I	I	I	I	I	I
Wheels	I				I				I
Bolts and nuts tightening	I				I				I
Stand joint	L	L	L	L	L	L	L	L	L
Suspension and setting	I				I				I
Fault warning light on instrument panel (4)									
Fuel lines (3)					I				I
Clutch wear					I				I
Break pad wear	I	I	I	I	I	I	I	I	I

#### RECOMMENDED PRODUCTS TABLE

Product	Description	Specifications
AGIP TEC 4T, SAE 15W-50	Engine oil	Use top-brand oils that meet or exceed the requirements of API SJ/CCMC G4/ACEA A3-04/ JASO MA specifications.

Product	Description	Specifications
FUCHS TITAN SAF 1091	Fork oil	-
AGIP MP GREASE	Grease for bearings, joints, couplings and leverages	As an alternative to the recommended product, use top brand grease for roller bearings with an operating temperature range of -30°C...+140° C (-22°F...+284°F), a drop point of 150°C... 230°C (302°F...446°F), high corrosion protection qualities and good water and rust resistance.
AGIP CHAIN GREASE SPRAY	Recommended CHAIN LUBRICANT	Grease
AGIP BRAKE 4 / BRAKE 5.1	Recommended BRAKE FLUID	-
AGIP BRAKE 4 / BRAKE 5.1	Recommended CLUTCH FLUID	-
AGIP PERMANENT SPEZIAL	Recommended ENGINE COOLANT	Ready mixed biodegradable coolant with "long life" technology and characteristics (red). Freezing protection up to -40° (-40°F). Compliant with CUNA 956-16 standard.



# TABLE OF CONTENTS

## A

ABS: 45  
Advanced functions: 34  
Air filter: 93  
Alarms: 25

## B

Battery: 11, 97, 99  
Brake: 10, 95, 108

## C

Chain: 114–116  
Clutch: 10, 67, 96, 97  
Clutch fluid: 10, 96, 97  
Clutch lever: 67  
coolant: 9  
Coolant: 9

## D

Disc brake: 108

Display: 23

## E

Engine oil: 10, 88–90  
Engine stop: 45

## F

Fork: 65  
Fuel: 8  
Fuses: 101

## G

Gearbox oil: 10

## H

Headlight: 104  
Horn: 43

## I

Identification: 54  
Immobilizer: 51  
Instrument panel: 21

## M

Maintenance: 87, 129, 130  
Maintenance Table: 130  
Mirrors: 107

## O

Oil filter: 90

## R

rear-view mirrors: 107  
Ride by wire: 72

## S

Saddle: 52

Scheduled maintenance:  
130

Shock absorbers: 62  
Spark plug: 92  
Stand: 12, 80  
Start-up: 44  
Stop switch: 45

## T

Technical data: 119  
Transmission: 114  
Turn indicators: 106  
Tyres: 91



#### THE VALUE OF SERVICE

As a result of continuous technical updates and specific mechanic training programs for Aprilia products, only **Aprilia Official Network** mechanics know this vehicle fully and have the special tools necessary to carry out maintenance and repair operations correctly.

The reliability of the vehicle also depends on its mechanical state. Checking the vehicle before riding it, its regular maintenance and the use of **Original Aprilia Spare Parts** only are essential factors!

For information about the nearest **Official Dealer and/or Service Centre**, consult the Yellow Pages or search directly on the inset map in our Official Website:

**[www.aprilia.com](http://www.aprilia.com)**

Only by requesting Aprilia Original Spare Parts can you be sure of purchasing products that were developed and tested during the actual vehicle design stage. All Aprilia Original Spare Parts undergo quality control procedures to guarantee reliability and durability.

The descriptions and illustrations given in this publication are not binding; While the basic characteristics as described and illustrated in this booklet remain unchanged, Aprilia reserves the right, at any time and without being required to update this publication beforehand, to make any changes to components, parts or accessories, which it considers necessary to improve the product or which are required for manufacturing or construction reasons.

Not all versions/models shown in this publication are available in all countries. The availability of individual versions/models should be confirmed with the official Aprilia sales network.

© Copyright 2010 - Aprilia. All rights reserved. Reproduction of this publication in whole or in part is prohibited. Aprilia - After sales service.

The Aprilia trademark is the property of Piaggio & C. S.p.A.