

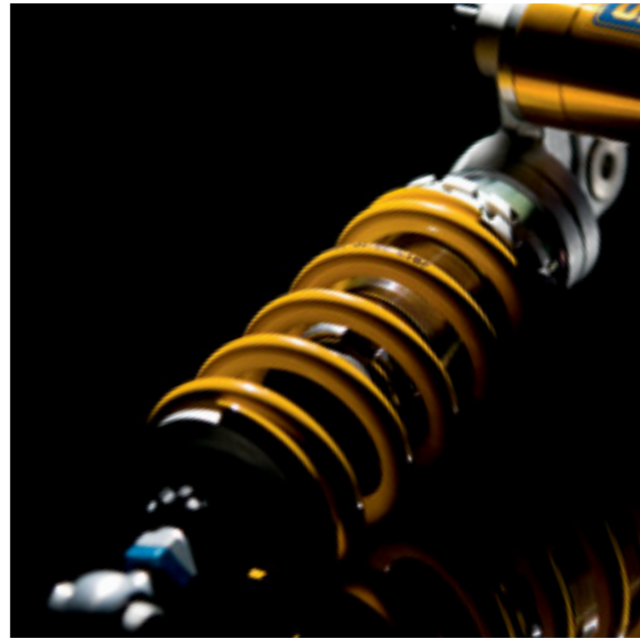
**AC
CES
SO
RIES**

2011/2012

MOTOR BIKES

EXHAUST SYSTEMS
HI-TECH PERFORMANCE
HI-TECH LOOKS
COMFORT QUALITY

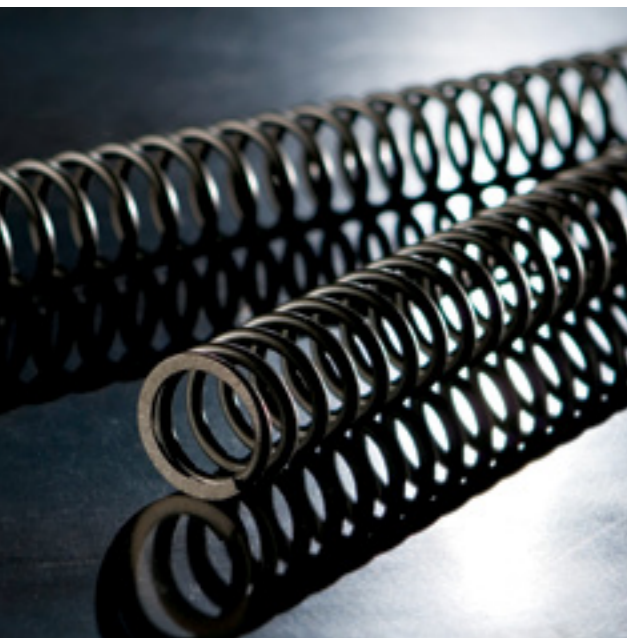
RSV4 FACTORY / APRC
RSV4 R / APRC
TUONO V4
DORSODURO 750
DORSODURO 750 FACTORY
DORSODURO 1200
SHIVER 750
SHIVER GT 750
MANA 850
MANA GT 850



OFF ROAD

RACING COMPONENTS

MXV 4.5
RXV 4.5 / 5.5
SXV 4.5 / 5.5



SCOOTERS

PROTECTION
TRANSPORT
CUSTOMIZE

SPORTCITY CUBE 300 / 125
SPORTCITY ONE 125 / 50 4 STROKE / 50 STREET
ATLANTIC 300 / 125
SR 50 R / R FACTORY / STREET



SCARABEO

SCARABEO 500 IE / 300 S IE
SCARABEO 200 IE / 125 IE
SCARABEO 100 4 STROKE / 50 4 STROKE
SCARABEO 50 STREET

HELMETS

RSV4 CARBON
APRILIA RACING
APRILIA TOURING
APRILIA STREET
APRILIA MODULAR
APRILIA OFF ROAD
SCARABEO

APPAREL & MERCH AND ISING



MOTOR BIKES

**EXHAUST SYSTEMS
HI-TECH PERFORMANCE
HI-TECH LOOKS
COMFORT QUALITY**

- RSV4 FACTORY / APRC
- RSV4 R / APRC
- TUONO V4
- DORSODURO 750
- DORSODURO 750 FACTORY
- DORSODURO 1200
- SHIVER 750
- SHIVER GT 750
- MANA 850
- MANA GT 850



ABSOLUTE QUALITY, STATE OF THE ART TECHNOLOGY, SUPERLATIVE STYLING AND A PASSION FOR DETAIL. ORIGINAL APRILIA ACCESSORIES EMBODY THE SAME QUALITIES THAT HAVE EARNED THIS GREAT MOTORCYCLE BRAND A PLACE OF HONOUR IN THE HEARTS OF THE WORLD'S MOST PASSIONATE AND DISCERNING RIDERS. CONCEIVED THROUGH UNPARALLELED TECHNICAL EXPERIENCE ON THE TRACK AND ON THE ROAD. PUT THROUGH THEIR PACES BY APRILIA'S OWN STRICT TEST RIDERS TO ENSURE THAT THEY CATER FOR EVERY PRACTICAL REQUISITE AND RIDING STYLE: FROM HYPERSPORTS AND NAKEDS TO OFF-ROAD BIKES. CREATED TO COMPLEMENT THE JOY OF OWNING AN APRILIA WITH THE PLEASURE OF PERSONALISING IT WITH YOUR OWN HANDS, ENHANCING ITS PERFORMANCE AND MAKING IT EVEN MORE PRESTIGIOUS AND UNIQUE.

EXHAUST SYSTEMS



HI-TECH PERFORMANCE



Drawing directly from motorsports, developed in collaboration with the leading experts in the sector, manufactured with machinery ensuring precision to a hundredth of a millimetre and hand welding, and extensively tested on the bench and on the track: a range of exhaust systems offering class beating excellence and performance. Products designed to maximise engine power, improve handling and control and reach new heights in terms of aerodynamics and lightness through the use of prestigious materials such as titanium and carbon. These exhaust systems may be used in conjunction with exclusive ECU mapping developed specifically for each Aprilia motorcycle model, while undoing the single screw fastening the "dB killer" device onto a street legal exhaust system lets you unleash the maximum performance possible for track use: are you ready to experience the same adrenaline rush as the world's champion racers?

From Aprilia's experience on racetracks all over the world comes an exclusive selection of components developed to maximise performance and severely tested in all conditions. Professional kits for the footrests, gearbox and suspension using the most advanced racing technology that are easy to install on their respective models and easily adjustable to suit personal preferences. Wheel rims forged with the same processes used in F1 to set previously unthinkable new standards for handling and lightness. Demand the best in every detail: choose Aprilia.



HI-TECH LOOKS



COMFORT QUALITY



Take your passion for technology and performance to the next level with the range of original Aprilia components. The extreme lightness and unmistakable appearance of carbon, the prestige and perfection of parts in billet aluminium, the technical quality of screws and fasteners in Ergal and the professional look of exclusive accessories. Everything you need to express your own riding style and a guarantee of total satisfaction, riding pleasure and reliability: whether on the track or on the road.



Experience unparalleled safety and comfort with original Aprilia accessories. Everything from bags, panniers and backpacks ensuring total robustness, protection and dynamic stability to special ergonomic saddles. A choice of accessories that have been specifically designed and tested for each Aprilia model to let you express your passion for riding and fulfil your desire for freedom. For a weekend in the saddle of your bike to long journeys through natural vistas and along endless motorways, accompanied always by the quality and style of Aprilia.



○

**RSV4
FACTORY**

**RSV4
R**



RSV4 FACTORY RSV4 R



AKRAPOVIC EVO1 COMPLETE RACING EXHAUST SYSTEM
AKRAPOVIC EVO2 COMPLETE RACING EXHAUST SYSTEM RSV4 APRC

CARBON
TITANIUM
CARBON
TITANIUM

894732
897318
899444
899445

• Complete Akrapovic racing exhaust system for track use made entirely from titanium with oval muffler in carbon or titanium • The cylinder head mating flanges are machined from solid billet aluminium while the silencer mounting brackets are in carbon fibre • The whole system weighs less than 5 kg and delivers a healthy increase in torque above 4,500 rpm, which is particularly notable from 4,500 to 8,000 rpm, significantly improving acceleration out of turns • Includes dedicated ECU mapping (with three R/S/T settings) to exploit the full potential of the exhaust • Unlike the standard ECU mapping, all three R, S and T maps deliver unlimited power - the S ECU mapping offers smoother response, whereas the R mapping limits torque in the first three gears • For track use only



AKRAPOVIC HOMOLOGATED SLIP-ON EXHAUST KIT INCLUSIVE OF RACING HEADER

CARBON
TITANIUM

B043763
B043764

• The kit consists of a hexagonal cross section carbon fibre or titanium silencer with extractable Db-killer, titanium header with catalytic converter, and titanium racing header with no catalytic converter • In the configuration with the Db-killer installed and the header with catalytic converter, the exhaust is homologated compliant with Euro3 sections 5 and 9 (emissions and noise) and may be used on public roads without modifying carburetion parameters • Fits onto the standard exhaust header and fastened to the passenger footrest with a specific bracket • An aluminium bracket is available separately for fastening the silencer to the bike without the passenger footrest • When replacing the header with the component supplied in the kit with no catalytic converter and removing the Db-killer, the exhaust system is considered a racing system and loses homologation, and can no longer be used on the public road. In this case, the specific ECU mapping - included with the kit on request - must be installed using the same procedure as used for the complete Evo Racing exhaust



ALUMINIUM BRACKET KIT FOR COMPLETE EVO RACING EXHAUST

895430

• Aluminium silencer mounting bracket
 • For track use only



ALUMINIUM BRACKET KIT FOR SLIP-ON EXHAUST

896180

• Aluminium silencer mounting bracket
 • For a sportier configuration with no passenger footpegs
 • For track use only



RACE ECU KIT FOR RSV4

896309

• Dedicated engine control unit for track use, pre-programmed with racing ECU mappings • For use on bikes fitted with aftermarket exhaust systems (complete systems or slip-on muffler) NOT supplied by Aprilia • Recommended for use in combination with exhausts with no catalytic converter, with or without Db-killer • Dedicated ECU mapping (with three R/S/T settings) to exploit the full potential of the exhaust • Unlike the standard ECU mapping, all three R, S and T maps deliver unlimited power - the S ECU mapping offers smoother response, whereas the R ECU mapping limits torque in the first three gears • After installation of ECU by an authorised Aprilia service centre, later updates may be downloaded and installed • For track use only



ADJUSTABLE ALUMINIUM FOOTPEG KIT
ADJUSTABLE FOOTREST KIT IN ALUMINIUM FOR RSV4 APRC

894864
899814

• Made entirely from billet aluminium
 • Adjustable with 9 different footpeg settings
 • Fine adjustment of gear and brake levers
 • With provision for standard brake light switch and for inverted gear lever installation
 • For track use only



RACING CHAIN **895408**

SPROCKET IN HARD ANODIZED ERGAL FOR RACING CHAIN **Z = 40** **896164**
Z = 42 **896165**

PINION FOR RACING CHAIN **Z = 15** **896167**
Z = 16 **896168**

- Racing final drive kit for RSV4, consisting of:
- Regina Racing ORNV6W chain with 520 pitch (used by the major Superstock world championship teams)
- Hard anodized Ergal sprocket (40 or 42 teeth)
- Lightweight steel pinion (15 or 16 teeth)
- For track use only

The following possible combinations may be installed to reduce rotating masses (all components are lighter than their standard counterparts, the whole kit saves weight by 850 g) and improve acceleration:

- chain, sprocket with 40 teeth and pinion with 16 teeth (drive ratio 2.500 - same as standard)
- chain, sprocket with 42 teeth and pinion with 16 teeth (drive ratio 2.625 - shorter than standard)
- chain, sprocket with 40 teeth and pinion with 15 teeth (drive ratio 2.667 - even shorter)
- chain, sprocket with 42 teeth and pinion with 15 teeth (drive ratio 2.800 - even shorter)



! **ATTENTION: THIS COMBINATION REQUIRES THE USE OF THE 520 PITCH RACING CHAIN - THE SPROCKET AND PINION CANNOT BE USED WITH THE STANDARD CHAIN OR IN COMBINATIONS WITH THE STANDARD SPROCKET AND PINION**

! **N.B.: IT IS RECOMMENDED THAT THE FINAL DRIVE COMPONENTS ARE REPLACED EVERY 4000 KM OR EARLIER IF SIGNS OF EXCESSIVE WEAR ARE NOTED (DEPENDING ON RIDING STYLE AND CONDITIONS)**



RACING SEMI-HANDLEBARS KIT **894865**
RACING SEMI-HANDLEBARS KIT RSV4 APRC **B043579**

- With collars machined from billet aluminium
- For a more effective riding position for sports use
- For track use only



LICENSE PLATE HOLE CAP KIT **895322**

- In laser-cut steel
- With laser-cut logos
- Permits removal of license plate for track use
- For track use only



ADJUSTABLE LICENSE PLATE MOUNTING KIT **895323**

- In laser-cut steel
- With white LED license plate light
- Gives the bike a sleeker and sportier look
- For track use only



CAP KIT FOR MIRROR MOUNT HOLES

895320

- In billet aluminium • With laser-cut logos
- Permits removal of mirrors for track use
- For track use only



**BRAKE LEVER
CLUTCH LEVER**

**895324
895325**

- In billet aluminium • Lightweight with anodised black finish
- Brake lever still maintains millimetre-precise adjustability
- Clutch lever with improved ergonomics
- For track use only



CRASH PADS KIT FOR "FACTORY" VERSION

894863

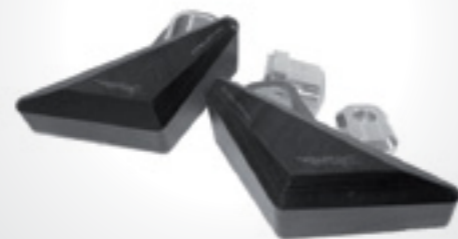
- Machined from solid nylon • Mountings in billet aluminium
- Distinctive triangular design • For "Factory" version only



CRASH PADS KIT FOR "R" VERSION

896353

- Machined from solid nylon • Mountings in billet aluminium
- Distinctive triangular design • For "R" version only



HANDLEBAR COUNTERWEIGHT KIT

895326

- In billet aluminium • With black nylon cap and laser-cut logos
- Design with concealed fastener screw



STAND PIN KIT

895321

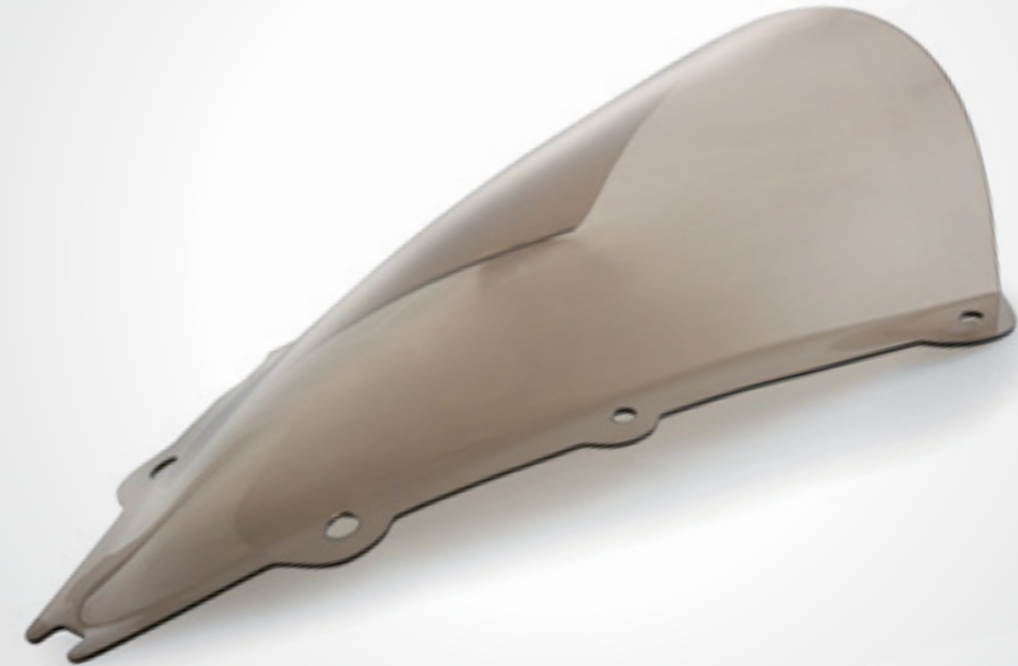
- In billet aluminium • Laser-cut logos
- Protective nylon crash pad
- Design with concealed fastener screw



EXTRA LARGE WINDSHIELD KIT

894862

- Taller windshield in thermoformed polycarbonate
- Tinted
- For track use only



**ALUMINIUM FRONT WHEEL RIMS
BLACK FORGED REAR WHEELS**

**895409
895410**

- Made from forged aluminium alloy • Engineered using advanced simulation and modelling tools such as FEM analysis, these wheel rims offer a weight saving over the standard (cast)* components while still ensuring unrivalled robustness
- The resulting reduction in gyroscopic effect and unsprung weight translates to unparalleled responsiveness and agility • Standard on RSV4 Factory

* on MY09 RSV4 R on MY11 RSV4 R with APRC
- 1.7 Kg, front - 0.4 Kg, front
- 2.4 Kg, rear - 1.4 Kg, rear



ÖHLINS TTX36 REAR SHOCK ABSORBER

894912

- Created especially for the RSV4 • Fully adjustable • Equippable with linear sensors
- Head and calliper mounting bracket made entirely from billet aluminium



ÖHLINS FACTORY REAR SHOCK ABSORBER

895334

- Öhlins rear shock absorber (OEM part on "Factory" version), available as an accessory for the R version • Maximum performance on the road with true racing looks.
- Replaces the standard unit without modification to the suspension mounts and linkage



HYDRAULIC PRELOAD KIT TTX36 SHOCK ABSORBER

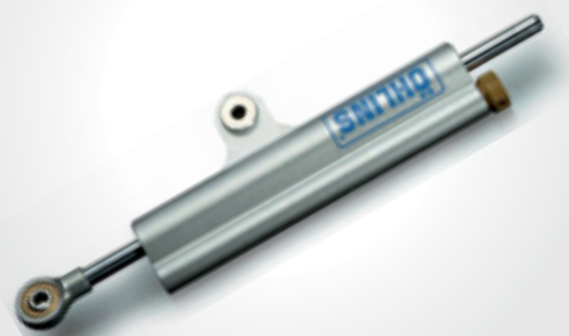
897995



ÖHLINS FACTORY STEERING DAMPER

894913

- Öhlins steering damper (OEM part on "Factory" version), available as an accessory for the R version • Maximum performance on the road with true racing looks
- Replaces the standard unit without modification to the frame mounts



**ÖHLINS FACTORY FRONT FORK KIT
ÖHLINS FACTORY FRONT FORK KIT RSV APRC**

**896267
899328**

- Includes Öhlins OEM front fork on "Factory" version and the lower steering plate (the upper steering plate on the bike is already compatible with this Öhlins fork)
- Can be mounted without having to replace the existing brake disks, brake calipers and rims



DISC LOCK

898735

- Roadlok® is an innovative disk lock and vehicle immobiliser antitheft device been created to respond to the requisites for security and practicality of all RSV4 owners
- The lock is mounted permanently on the vehicle and impedes any movement of the vehicle itself, eliminating the risk of damaging the bike should you forget to release the lock
- Simple to use, practical (the only part removed is a pin inserted into the disc ventilation holes, solving the storage problem associated with regular disc locks due to the lack of space under the saddle of the RSV4) and extremely secure
- The lock has Thatcham MC1 certification, which guarantees the resistance of the antitheft system against attempted forcing, and is currently undergoing SRA certification
- Machined from a single billet of aluminium and anodised, the device features Ergal bushes, screws in class 8.8 steel and a lock and pin in high strength steel
- The lock is the most secure unit available on the market today, with 1.5 million combinations
- Applicable to RSV4 Factory and R, MY09 and MY11



MOTORCYCLE COVER

894866

- Indoor cover • In breathable Lycra • Two-tone black and red colour scheme
- With Aprilia and RSV4 logos



REAR PADDOCK STAND

894870

- In high tensile steel • Powder coated • Bearing-mounted nylon wheels
- Lateral plate in steel with laser-cut logo



REAR PADDOCK STAND

AP8705021

- Ideal for maintenance whether in the pits or in your garage
- Allows the rear wheel to be replaced quickly and conveniently



CARBON EXTRACTOR KIT

894871

- Component made from triple layer composite (carbon/kevlar/carbon) with radiused corners and matte finish varnish coating • Supplied with fastener hardware for installation (if necessary), personalised decals if applicable and multilingual instruction manual
- Homologated for road use

CARBON TUB KIT

895400

- Component made from triple layer composite (carbon/kevlar/carbon) with radiused corners and matte finish varnish coating • Supplied with fastener hardware for installation (if necessary), personalised decals if applicable and multilingual instruction manual
- Homologated for road use



**RH CARBON FAIRING KIT
LH CARBON FAIRING KIT**

**895398
895399**

- Component made from triple layer composite (carbon/kevlar/carbon) with radiused corners and matte finish varnish coating • Supplied with fastener hardware for installation (if necessary), personalised decals if applicable and multilingual instruction manual
- Homologated for road use

**RH CARBON TAIL FAIRING KIT
LH CARBON TAIL FAIRING KIT**

**895402
895403**

- Component made from triple layer composite (carbon/kevlar/carbon) with radiused corners and matte finish varnish coating • Supplied with fastener hardware for installation (if necessary), personalised decals if applicable and multilingual instruction manual
- Homologated for road use

CARBON FRONT FAIRING KIT

895405

- Component made from triple layer composite (carbon/kevlar/carbon) with radiused corners and matte finish varnish coating • Supplied with fastener hardware for installation (if necessary), personalised decals if applicable and multilingual instruction manual
- Homologated for road use

895402 RH
895403 LH

895395

895396 RH
895397 LH

895406

895405

895394

895400

894871

895398 RH
895399 LH

FRONT CARBON MUDGUARD KIT

895394

- Component from polished carbon fibre (with matte finish) • Fits onto the standard calliper mounting brackets for sportier looks evocative of the Factory version
- Weight saving • Homologated for road use
- Front carbon mudguard for USA: code 896184



REAR CARBON MUDGUARD KIT

895395

- Component from polished carbon fibre (with matte finish) • Fits onto the standard swingarm for sportier looks evocative of the Factory version • Weight saving
- Homologated for road use



**RH CARBON SIDE FAIRING KIT
LH CARBON SIDE FAIRING KIT**

**895396
895397**

- Component made from varnished (matte finish) carbon fibre
- Used to replace the plastic side fairings to give the bike sportier looks evocative of the Factory version • Weight saving • Homologated for road use



CARBON TANK COVER KIT

895406

- Component made from triple layer composite (carbon/kevlar/carbon) with radiused corners and matte finish varnish coating • Supplied with fastener hardware for installation (if necessary), personalised decals if applicable and multilingual instruction manual
- Homologated for road use



CARBON GUARD KIT FOR STANDARD EXHAUST

895319

- In 200g carbon fibre with an inner heat insulation layer
- Fits onto standard exhaust
- Sportier looks and reduced weight



REAR SWING ARM SCRATCH PROTECTION KIT - CARBON FIBRE

898373

- Component made from carbon fibre



CARBON HEEL GUARD KIT

895318

- In 200g carbon fibre • Less weight and sportier looks
- Also compatible with optional adjustable footpegs



TANK COVER

894869

- In technical fabric with carbon effect inserts
- With fasteners for small and large tank bags
- Tested, approved resistance to oil, fuel and UV light. Ensures ergonomics and stability even at higher speeds
- Features a hole for refuelling without removing the cover
- With contoured electrostatic tank protector



SMALL TANK BAG
LARGE TANK BAG

894868
897049

- In technical fabric with carbon effect inserts
- With fasteners for tank cover
- Tested, approved resistance to oil, fuel and UV light. Ensures ergonomics and stability even at higher speeds
- The small (3 litre) and large (9 litre) tank bags are secured to the tank cover with quick release buckles
- With upper map pocket and rain hood
- A handle and shoulder strap make the small bag easy to carry



TUONO V4



AKRAPOVIC EVO1 COMPLETE RACING EXHAUST SYSTEM

**CARBON
TITANIUM**

**894732
897318**

• Complete Akrapovic racing exhaust system for track use made entirely from titanium with oval muffler in carbon or titanium • The cylinder head mating flanges are machined from solid billet aluminium while the silencer mounting brackets are in carbon fibre • The whole system weighs less than 5 kg and delivers a healthy increase in torque above 4,500 rpm, which is particularly notable from 4,500 to 8,000 rpm, significantly improving acceleration out of turns • Includes dedicated ECU mapping (with three R/S/T settings) to exploit the full potential of the exhaust • Unlike the standard ECU mapping, all three R, S and T maps deliver unlimited power - the S ECU mapping offers smoother response, whereas the R mapping limits torque in the first three gears • For track use only



AKRAPOVIC HOMOLOGATED SLIP-ON EXHAUST KIT INCLUSIVE OF RACING HEADER

**CARBON
TITANIUM**

**B043763
B043764**

• The kit consists of a hexagonal cross section carbon fibre or titanium silencer with extractable Db-killer, titanium header with catalytic converter, and titanium racing header with no catalytic converter • In the configuration with the Db-killer installed and the header with catalytic converter, the exhaust is homologated compliant with Euro3 sections 5 and 9 (emissions and noise) and may be used on public roads without modifying carburetion parameters • Fits onto the standard exhaust header and fastened to the passenger footrest with a specific bracket • An aluminium bracket is available separately for fastening the silencer to the bike without the passenger footrest • When replacing the header with the component supplied in the kit with no catalytic converter and removing the Db-killer, the exhaust system is considered a racing system and loses homologation, and can no longer be used on the public road. In this case, the specific ECU mapping - included with the kit on request - must be installed using the same procedure as used for the complete Evo Racing exhaust



ALUMINIUM BRACKET KIT FOR COMPLETE RACING EVO EXHAUST

895430

• Aluminium silencer mounting bracket
• For track use only



RACE ECU KIT

896309

• Dedicated engine control unit for track use, pre-programmed with racing ECU mappings • For use on bikes fitted with aftermarket exhaust systems (complete systems or slip-on muffler) NOT supplied by Aprilia • Recommended for use in combination with exhausts with no catalytic converter, with or without Db-killer • Dedicated ECU mapping (with three R/S/T settings) to exploit the full potential of the exhaust • Unlike the standard ECU mapping, all three R, S and T maps deliver unlimited power - the S ECU mapping offers smoother response, whereas the R ECU mapping limits torque in the first three gears • After installation of ECU by an authorised Aprilia service centre, later updates may be downloaded and installed • For track use only



ADJUSTABLE ALUMINIUM FOOTPEG KIT

899814

• Made entirely from billet aluminium
• Adjustable with 9 different footpeg settings
• Fine adjustment of gear and brake levers
• With provision for standard brake light switch and for inverted gear lever installation
• For track use only



ALUMINIUM BRACKET KIT FOR SLIP-ON EXHAUST

896180

• Aluminium silencer mounting bracket
• For a sportier configuration with no passenger footpegs
• For track use only



ADJUSTABLE LICENSE PLATE MOUNTING KIT

895323

• In laser-cut steel • With white LED license plate light
• Gives the bike a sleeker and sportier look
• For track use only



RACING CHAIN **895408**

SPROCKET IN HARD ANODIZED ERGAL FOR RACING CHAIN **Z = 40** **896164**
Z = 42 **896165**

PINION FOR RACING CHAIN **Z = 15** **896167**
Z = 16 **896168**

- Racing final drive kit for TUONO V4, consisting of:
- Regina Racing ORNV6W chain with 520 pitch (used by the major Superstock world championship teams)
- Hard anodised Ergal sprocket (40 or 42 teeth)
- Lightweight steel pinion (15 or 16 teeth)
- For track use only

The following possible combinations may be installed to reduce rotating masses (all components are lighter than their standard counterparts, the whole kit saves weight by 850 g) and improve acceleration:

- chain, sprocket with 40 teeth and pinion with 16 teeth (drive ratio 2.500)
- chain, sprocket with 42 teeth and pinion with 16 teeth (drive ratio 2.625)
- chain, sprocket with 40 teeth and pinion with 15 teeth (drive ratio 2.667)
- chain, sprocket with 42 teeth and pinion with 15 teeth (drive ratio 2.800)



! **ATTENTION: THIS COMBINATION REQUIRES THE USE OF THE 520 PITCH RACING CHAIN - THE SPROCKET AND PINION CANNOT BE USED WITH THE STANDARD CHAIN OR IN COMBINATIONS WITH THE STANDARD SPROCKET AND PINION**

! **N.B.: IT IS RECOMMENDED THAT THE FINAL DRIVE COMPONENTS ARE REPLACED EVERY 4000 KM OR EARLIER IF SIGNS OF EXCESSIVE WEAR ARE NOTED (DEPENDING ON RIDING STYLE AND CONDITIONS)**

ALUMINIUM FRONT WHEEL RIMS **895409**
BLACK FORGED REAR WHEELS **895410**

- Made from forged aluminium alloy
- Engineered using advanced simulation and modelling tools such as FEM analysis, these wheel rims offer a weight saving over the standard components while still ensuring unrivalled robustness
- The resulting reduction in gyroscopic effect and unsprung weight translates to unparalleled responsiveness and agility



ÖHLINS FRONT FORK KIT **899328**

- Includes the Öhlins FG616 front fork, fitted as standard, and the lower steering yoke (the upper yoke is already compatible with the Öhlins fork)
- Installable without having to replace the existing brake discs, callipers and rims



ÖHLINS TTX36 REAR SHOCK ABSORBER **894912**

- Fully adjustable
- Equippable with linear sensors
- Head and calliper mounting bracket made entirely from billet aluminium



ÖHLINS REAR SHOCK ABSORBER **895334**

- Maximised performance on the road and track with genuine racing looks
- Replaces the standard unit without modification to the suspension mounts and linkage

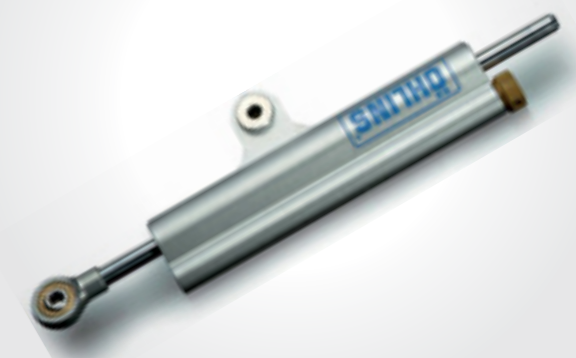


TTX SHOCK ABSORBER HYDRAULIC PRELOAD KIT **897995**



ÖHLINS STEERING DAMPER **894913**

- Maximised performance on the road and track with genuine racing looks
- Replaces the standard unit without modification to the frame mounts





MOTORCYCLE COVER

B043847

- Protects the bike totally against dust, scratches and minor knocks
- Made to measure entirely in Italy • Minute attention to detail
- Antistatic, warp-knit fabric • Slightly elasticated



FRONT CARBON MUDGUARD KIT

895394

- Component made from varnished (matte finish) carbon fibre
- Weight saving • Homologated for road use
- Front carbon mudguard for USA: code 896184



REAR CARBON MUDGUARD KIT

895395

- Component made from varnished (matte finish) carbon fibre
- Weight saving • Homologated for road use



STAND PIN KIT

B043816

- In billet aluminium
- Protective nylon crash pad
- Design with concealed fastener screw



DISC LOCK

898735

- Roadlok® is an innovative disk lock and vehicle immobiliser antitheft device that combines security with practicality
- The lock is mounted permanently on the vehicle and impedes any movement of the vehicle itself, eliminating the risk of damaging the bike should you forget to release the lock
- Simple to use, practical (the only part removed is a pin inserted into the disc ventilation holes, eliminating the storage problem associated with regular disc locks) and extremely secure
- The lock has Thatcham MC1 certification, which guarantees the resistance of the antitheft system against attempted forcing, and is currently undergoing SPA certification
- Machined from a single billet of aluminium and anodised, the device features Ergal bushes, screws in class 8.8 steel and a lock and pin in high strength steel
- The lock is the most secure unit available on the market today, with 1.5 million combinations



RH CARBON SIDE FAIRING KIT
LH CARBON SIDE FAIRING KIT

895396
895397

- Component made from varnished (matte finish) carbon fibre
- Used to replace the plastic side fairings to give the bike sportier looks • Weight saving
- Homologated for road use



REAR SWING ARM SCRATCH PROTECTION KIT - CARBON FIBRE

898373

- Component made from carbon fibre



REAR PADDOCK STAND

AP8705021

- Ideal for maintenance whether in the pits or in your garage
- Allows the rear wheel to be replaced quickly and conveniently



CARBON TANK COVER KIT

895406

- Component made from triple layer composite (carbon/kevlar/carbon) with radiused corners and matte finish varnish coating
- Supplied with fastener hardware for installation (if necessary), personalised decals if applicable and multilingual instruction manual
- Homologated for road use



CARBON HEEL GUARD KIT

895318

- In 200g carbon fibre • Less weight and sportier looks
- Also compatible with optional adjustable footpegs



TANK COVER

894869

- In technical fabric with carbon effect inserts
- With fasteners for small and large tank bags
- Tested, approved resistance to oil, fuel and UV light. Ensures ergonomics and stability even at higher speeds
- Features a hole for refuelling without removing the cover
- With contoured electrostatic tank protector



SMALL TANK BAG
LARGE TANK BAG

894868
897049

- In technical fabric with carbon effect inserts
- With fasteners for tank cover
- Tested, approved resistance to oil, fuel and UV light. Ensures ergonomics and stability even at higher speeds
- The small (3 litre) and large (9 litre) tank bags are secured to the tank cover with quick release buckles
- With upper map pocket and rain hood
- A handle and shoulder strap make the small bag easy to carry



DORSO DURO 750
DORSO DURO 750 FACTORY



APRILIA BY ARROW HOMOLOGATED SLIP-ON EXHAUST KIT RACING DB KILLER (100 dB) KIT

890250
894942

- Titanium silencers with carbon end-caps and steel headers for a total weight reduction of almost 7 Kg compared with the standard system
- Sporty looks, spine-tingling sound, maximum performance on the road
- Euro3 compliant
- Even higher performance for track use achievable by removing the dBKiller devices or fitting the accessory dB Killer devices for track use
- Installation without clamps for cleaner looks

Euro3



CLUTCH HOUSING GUARD KIT

894089

- Made from laser-cut stainless steel
- Supplied with fastener hardware
- Standard on Dorsoduro Factory



HAND MIRROR IN ALUMINIUM HOMOLOGATED

LEFT
RIGHT

890471
890272

- Accessory in billet aluminium
- Friction mount adjuster screws for the optimum setting
- Convex glass for optimum visibility
- Designed in collaboration with Aprilia style centre
- Tested in-house in accordance with the most stringent Aprilia quality standards



ALUMINIUM FRONT WHEEL RIMS GOLD FORGED REAR WHEELS

896312
896313

- Maximum performance on the track and on the road
- In forged aluminium
- Reduced power absorption and reduced steering torque due to the use of a lightweight material and forging technology
- Improved handling
- The reduced weight improves the bike's balance and dynamic behaviour



COMFORT SADDLE WITH GEL

890252

- Saddle padded with gel and special material
- Maximum grip for rider
- Exposed stitching
- Developed in collaboration with the Aprilia style centre
- For the user who demands maximum comfort and style



AJUSTABLE REAR SHOCK ABSORBER KIT **890253**

- Shock absorber with separate canister
- With fully adjustable compression and rebound
- Improved riding comfort and wheel dynamics
- Reduces possibility of losing contact with ground
- Standard on Dorsoduro Factory



ENGINE GUARD KIT **894085**

- Fastener pins in billet aluminium
- Bumpers in machined nylon



GOLD COLOURED CHAIN KIT **890255**

- For even better performance with new seal rings
- The ideal choice for more demanding or extreme applications
- Pins and plates in special steel alloy
- Bedding-in preload
- Gold coloured links to further enhance the visual impact of the mechanicals



SPROCKET IN HARD ANODISED ERGAL **HOMOLOGATED Z = 46** **890254**
RACING RACING **Z = 47** **894083**
RACING RACING **Z = 48** **894084**

- In ergal
- Manufactured to extremely high standards
- Light and extremely strong
- Recommended for a more professional biased use
- Dark grey
- Compatible with standard or gold coloured chain



WHEEL AXLE CRASH PAD KIT **890259**

- The bumper kit reduces the possibility of damage to costly mechanical components (discs, front brake callipers, calliper mounting brackets, rear brake calliper) and allows the bike to be ridden safely again after a fall



FOOTPEG RUBBER KIT **890256**

- Greater comfort and a surer grip for the rider, especially when not wearing riding boots
- These components offer an additional barrier against vibration transmission



BRAKE LEVER CLUTCH LEVER **890257** **890258**

- Accessory in billet aluminium
- For track use only



BRAKE FLUID TANK COVER CLUTCH OIL RESERVOIR COVER **890273** **890274**

- Accessory in billet aluminium
- For track use only



MOTORCYCLE COVER **894873**

- Protects the bike totally against dust, scratches and minor knocks
- Made to measure entirely in Italy
- Minute attention to detail
- Antistatic, warp-knit fabric
- Slightly elasticated



PASSENGER GRAB-HANDLE KIT **890686**

- Made in metal and designed for maximum passenger ergonomics



RACING RIDER FOOTPEG KIT **890270**

- Offers rider a surer grip
- For track use only



ADJUSTABLE LICENSE PLATE MOUNTING KIT **890271**

- Accessory in laser-cut steel
- Eye-catching design
- Uses original licence plate light
- Adjustable angle
- Includes mounting for original reflector
- For track use only





SIDE TANK BAGS KIT 894859

- Matching with tank cover and easy to fasten thanks to high-strength zips
- Ideal for further increasing load capacity
- Waterproof cover also included



SADDLE BAG KIT 894860

- Innovative saddlebag consisting of a backpack that fastens onto a nylon base with side pockets
- With shoulder straps
- Once the backpack is removed and worn, the base remains fixed to the bike without compromising passenger comfort



TANK COVER 894857

- Made from nylon and PVC
- With embroidered logos
- Gives the Dorsoduro an even more aggressive look
- Allows fitment of the dedicated tank bag, the special side bags or both



TANK BAG 894858

- Extensible
- With practical pockets and a carry handle
- Fastens onto tank cover with quick release clips and an adjustable fastener
- Includes rain hood



SEMI-RIGID PANNIER KIT 856955

- Dynamic safety and maximum protection for your luggage
- Made from technical Sky
- Extremely simple to fit and fasten onto the lateral mounts
- Elegant and spacious with a total capacity of 42 litres
- Equipped with reflectors to increase night visibility
- Padlockable
- Complete with rain hood



SEMI-RIGID PANNIER MOUNT KIT 890143

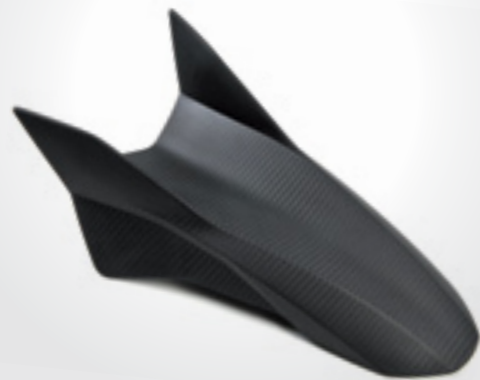
- Maximum durability and practicality
- Made in high strength material
- Media blasted and cataphoresis treated against corrosion and wear
- Allows fitment of side panniers
- Integrated design



HIGH FRONT MUDGUARD KIT IN CARBON

897593

- Component made from twill weave multilayer carbon fibre
- Matte surface finish (polished and unpainted)
- Supplied with fastener hardware for installation, if necessary
- Standard on Dorsoduro Factory



LOW FRONT MUDGUARD KIT IN CARBON

894854

- Component made from twill weave multilayer carbon fibre
- Matte surface finish (polished and unpainted)
- Supplied with fastener hardware for installation, if necessary



REAR CARBON MUDGUARD KIT

894855

- Component made from twill weave multilayer carbon fibre
- Matte surface finish (polished and unpainted)
- Supplied with fastener hardware for installation, if necessary



HANDGUARD KIT IN CARBON

894856

- Component made from twill weave multilayer carbon fibre
- Matte surface finish (polished and unpainted)
- Supplied with fastener hardware for installation, if necessary



LOCK COVER KIT IN CARBON

897390

- Component made from twill weave multilayer carbon fibre
- Matte surface finish (polished and unpainted)
- Supplied with fastener hardware for installation, if necessary
- Standard on Dorsoduro Factory



CARBON SIDE FAIRING KIT
CARBON SIDE FAIRING KIT

RH
LH

897391
897392

- Component made from twill weave multilayer carbon fibre
- Matte surface finish (polished and unpainted)
- Supplied with fastener hardware for installation, if necessary
- Standard on Dorsoduro Factory



DORSO DURO 1200



APRILIA BY ARROW HOMOLOGATED SLIP-ON EXHAUST KIT

899443

- Titanium silencers with carbon end-caps and steel headers
- Weight reduction of approximately 4.6 Kg compared with the standard system
- Sporty looks
- Spine-tingling sound
- Maximum performance on the road
- Euro3 compliant
- Even higher performance for track use achievable by removing the dKiller devices
- Installation without clamps for cleaner looks

Euro3



ALUMINIUM FRONT WHEEL RIMS
GOLD FORGED REAR WHEELS

896312
896313

- Maximum performance on the track and on the road
- In forged aluminium
- Reduced power absorption and reduced steering torque due to the use of a lightweight material and forging technology
- Improved handling
- The reduced weight improves the bike's balance and dynamic behaviour



ENGINE GUARD KIT

894086

- Fastener pins in billet aluminium
- Bumpers in machined nylon



CLUTCH HOUSING GUARD KIT

899813

- Made in laser-cut stainless steel
- Supplied with fastener hardware



REAR CARBON MUDGUARD KIT

894855

- Component made from twill weave multilayer carbon fibre
- Matte surface finish (polished and unpainted)
- Supplied with fastener hardware for installation, if necessary



WHEEL AXLE CRASH PAD KIT

890259

- The bumper kit reduces the possibility of damage to costly mechanical components (discs, front brake callipers, calliper mounting brackets, rear brake calliper) and allows the bike to be ridden safely again after a fall



LOW FRONT MUDGUARD KIT IN CARBON

894854

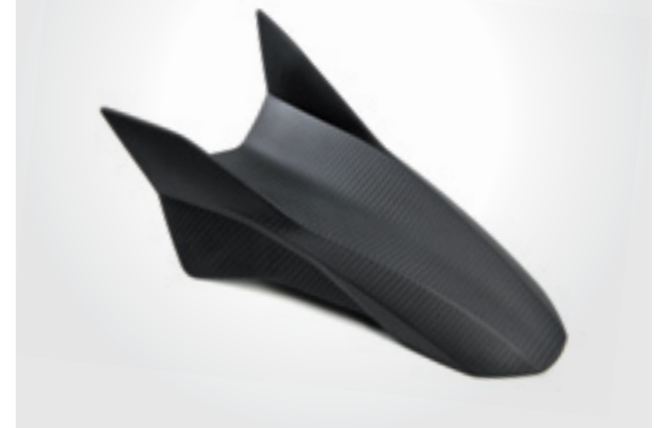
- Component made from twill weave multilayer carbon fibre
- Matte surface finish (polished and unpainted)
- Supplied with fastener hardware for installation, if necessary



HIGH FRONT MUDGUARD KIT IN CARBON

897593

- Component made from twill weave multilayer carbon fibre
- Matte surface finish (polished and unpainted)
- Supplied with fastener hardware for installation, if necessary



DISC LOCK

898735

- Roadlok® is an innovative disk lock and vehicle immobiliser antitheft device that combines security with practicality
- The lock is mounted permanently on the vehicle and impedes any movement of the vehicle itself, eliminating the risk of damaging the bike should you forget to release the lock
- Simple to use, practical (the only part removed is a pin inserted into the disc ventilation holes, solving the storage problems usually associated with regular disc locks) and extremely secure
- The lock has Thatcham MC1 certification, which guarantees the resistance of the antitheft system against attempted forcing, and is currently undergoing SRA certification
- Machined from a single billet of aluminium and anodised, the device features Ergal bushes, screws in class 8.8 steel and a lock and pin in high strength steel
- The lock is the most secure unit available on the market today, with 1.5 million combinations



PASSENGER GRAB-HANDLE KIT

890686

- Made in metal and designed for maximum passenger ergonomics



MOTORCYCLE COVER

894873

- Protects the bike totally against dust, scratches and minor knocks
- Made to measure entirely in Italy
- Minute attention to detail
- Antistatic, warp-knit fabric
- Slightly elasticated



RACING CHAIN

895408

SPROCKET IN HARD ANODIZED ERGAL Z = 40 FOR RACING CHAIN

896164

PINION FOR RACING CHAIN Z = 16

896168



ATTENTION: THIS COMBINATION REQUIRES THE USE OF THE 520 PITCH RACING CHAIN - THE SPROCKET AND PINION CANNOT BE USED WITH THE STANDARD CHAIN OR IN COMBINATIONS WITH THE STANDARD SPROCKET AND PINION



N.B.: IT IS RECOMMENDED THAT THE FINAL DRIVE COMPONENTS ARE REPLACED EVERY 4000 KM OR EARLIER IF SIGNS OF EXCESSIVE WEAR ARE NOTED (DEPENDING ON RIDING STYLE AND CONDITIONS)

ADJUSTABLE LICENSE PLATE MOUNTING KIT

899815

- Accessory in laser-cut steel
- Eye-catching design
- Uses original licence plate light
- Adjustable angle
- Includes mounting for original reflector
- For track use only



LATERAL TANK BAG KIT

899568

- Usable with tank cover
- Fastened with practical high-strength zips
- Ideal for further increasing load capacity
- Rain hood also included

SADDLE BAG KIT

894860

- Innovative saddlebag consisting of a backpack that fastens onto a nylon base with side pockets
- With shoulder straps
- Once the backpack is removed and worn, the base remains fixed to the bike without compromising passenger comfort

TANK COVER

899566

- Made from nylon and PVC
- With embroidered logos
- Gives the Dorsoduro an even more aggressive look
- Allows fitment of the dedicated tank bag, the special side bags or both

TANK BAG

899567

- Extensible
- With practical pockets and a carry handle
- Fastens onto tank cover with quick release clips and an adjustable fastener
- Includes rain hood



SEMI-RIGID PANNIER KIT

856955

- Dynamic safety and maximum protection for your luggage
- Made from technical Sky
- Extremely simple to fit and fasten onto the lateral mounts
- Elegant and spacious with a total capacity of 42 litres
- Equipped with reflectors to increase night visibility
- Padlockable
- Complete with rain hood



SEMI-RIGID PANNIER MOUNT KIT

899370

- Maximum durability and practicality
- Made in high strength material
- Media blasted and cathaphoresis treated against corrosion and wear
- Allows fitment of side panniers
- Integrated design



SHIVER 750



APRILIA BY AKRAPOVIC HOMOLOGATED SLIP-ON EXHAUST KIT

897816

- Titanium silencers with carbon end-caps and steel headers for a total weight reduction of over 4 Kg compared with the standard system
- Sporty looks, spine-tingling sound, maximum performance on the road
- Euro3 compliant
- Even higher performance for track use achievable by removing the dBkiller devices or fitting the accessory dB Killer devices for track use
- Stainless steel shield for undertail section
- License plate mount in laser-cut steel

Euro3

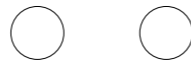


HAND MIRROR IN ALUMINIUM HOMOLOGATED

LEFT
RIGHT

890471
890272

- Accessory in billet aluminium
- Friction mount adjuster screws for the optimum setting
- Convex glass for optimum visibility
- Designed in collaboration with Aprilia style centre
- Tested in-house in accordance with the most stringent Aprilia quality standards



ENGINE GUARD KIT

894086

- Fastener pins in billet aluminium
- Bumpers in machined nylon



STAND PIN KIT

897795

- In billet aluminium
- Protective nylon crash pad
- Design with concealed fastener screw



GOLD COLOURED CHAIN KIT

890649

- For even better performance with new seal rings
- The ideal choice for more demanding or extreme applications
- Pins and plates in special steel alloy
- Bedding-in preload
- Gold coloured links to further enhance the visual impact of the mechanicals



SPROCKET IN HARD ANODIZED ERGAL Z = 43
Z = 44

890584
890585

- Street legal
- Made in ergal
- Manufactured to extremely high standards
- Conceived for maximum riding fun
- Light and extremely strong
- Recommended for a more professional biased use
- Dark grey
- Available with two different toothings
- Compatible with standard or gold coloured chain



IGNITION SWITCH COVER KIT IN CARBON

856380

- Component made from carbon fibre • Homologated for road use



FRONT CARBON MUDGUARD KIT

856381

- Component made from carbon fibre • Homologated for road use



**BRAKE FLUID TANK COVER
CLUTCH OIL RESERVOIR COVER**

**890273
890274**

- Accessory in billet aluminium • For track use only



**BRAKE LEVER
CLUTCH LEVER**

**890257
890258**

- Accessory in billet aluminium • For track use only



HANDGUARD KIT

894088

- Made from high strength plastic
- Complete with fastener hardware for installation



MOTORCYCLE COVER

894875

- Protects the bike totally against dust, scratches and minor knocks
- Made to measure entirely in Italy • Minute attention to detail
- Antistatic, warp-knit fabric • Slightly elasticated



RACING RIDER FOOTPEG KIT

890276

- Accessory in billet aluminium • Ideal for track use
- Raised by 16 mm • Set back by 12 mm
- Designed in collaboration with the Aprilia style centre
- Tested in-house in accordance with the most stringent Aprilia quality standards
- For track use only



RACING PASSENGER FOOTPEG KIT

890275

- Accessory in billet aluminium • For track use only



REAR PADDOCK STAND

AP8705021

- Ideal for maintenance whether in the pits or in your garage
- Allows the rear wheel to be replaced quickly and conveniently



CENTRE STAND KIT

890099

- In high tensile steel • Powder coated • For optimum vehicle stability
- Homologated original Aprilia product • Fastener hardware kit included



ADJUSTABLE LICENSE PLATE MOUNTING KIT

890277

- Accessory in laser-cut steel • Eye-catching design • Uses original licence plate light
- Adjustable angle • Includes mounting for original reflector • For track use only



TANK BACKPACK

856952

- A sturdy and versatile travel companion • Made from Skay technical fabric and extra-strong polyester • 14 litre capacity • Fits onto tank cover with 3 snap fasteners • Specially designed not to interfere with arm movement when riding or obstruct visibility of instrumentation • Easy to carry after removal with practical shoulder strap • With waterproof rain hood



TANK COVER

856953

- Total protection against scratches, fuel and the weather • Covers the tank perfectly • Fuel cap remains easily accessible • Exterior in Skay technical fabric and extra-strong polyester • Washable and reusable protective film in electrostatic PVC • Snap fasteners for fitting onto tank bag



TAIL FAIRING BACKPACK

856954

- Further increases luggage capacity • Made from Skay technical fabric and extra-strong polyester • Fits quickly and securely onto the 4 hooks on the standard tail fairing



SEMI-RIGID PANNIER KIT

856955

- Dynamic safety and maximum protection for your luggage • Made from technical Skay • Extremely simple to fit and fasten onto the lateral mounts • Elegant and spacious with a total capacity of 42 litres • Equipped with reflectors to increase night visibility • Padlockable • Complete with rain hood



SEMI-RIGID PANNIER MOUNT KIT

897106

- Maximum durability and practicality • Made in high strength material • Media blasted and cataphoresis treated against corrosion and wear • Allows fitment of side panniers • Integrated design



SHIVER GT 750



APRILIA BY AKRAPOVIC HOMOLOGATED SLIP-ON EXHAUST KIT

890249

- Titanium silencers with carbon end-caps and steel headers for a total weight reduction of over 4 Kg compared with the standard system
- Sporty looks, spine-tingling sound, maximum performance on the road
- Euro3 compliant
- Even higher performance for track use achievable by removing the dBkiller devices or fitting the accessory dB Killer devices for track use
- Stainless steel shield for undertail section
- License plate mount in laser-cut steel
- Carbon fibre heat shields on headers

Euro3



RACING accessories: intended solely for motorcycles used on circuits closed to public traffic and may not be used for any other purpose.

HAND MIRROR IN ALUMINIUM HOMOLOGATED

LEFT
RIGHT

890471
890272

- Accessory in billet aluminium
- Friction mount adjuster screws for the optimum setting
- Convex glass for optimum visibility
- Designed in collaboration with Aprilia style centre
- Tested in-house in accordance with the most stringent Aprilia quality standards



ENGINE GUARD KIT

894086

- Fastener pins in billet aluminium
- Bumpers in machined nylon



STAND PIN KIT

897795

- In billet aluminium
- Protective nylon crash pad
- Design with concealed fastener screw



GOLD COLOURED CHAIN KIT

890649

- For even better performance with new seal rings
- The ideal choice for more demanding or extreme applications
- Pins and plates in special steel alloy
- Bedding-in preload
- Gold coloured links to further enhance the visual impact of the mechanicals



SPROCKET IN HARD ANODIZED ERGAL Z = 43
Z = 44

890584
890585

- Street legal
- Made in ergal
- Manufactured to extremely high standards
- Conceived for maximum riding fun
- Light and extremely strong
- Recommended for a more professional biased use
- Dark grey
- Available with two different toothings
- Compatible with standard or gold coloured chain



IGNITION SWITCH COVER KIT IN CARBON

858380

- Component made from carbon fibre • Homologated for road use



FRONT CARBON MUDGUARD KIT

858381

- Component made from carbon fibre • Homologated for road use



**BRAKE FLUID TANK COVER
CLUTCH OIL RESERVOIR COVER**

**890273
890274**

- Accessory in billet aluminium • For track use only



**BRAKE LEVER
CLUTCH LEVER**

**890257
890258**

- Accessory in billet aluminium • For track use only



MOTORCYCLE COVER

894875

- Protects the bike totally against dust, scratches and minor knocks
- Made to measure entirely in Italy • Minute attention to detail
- Antistatic, warp-knit fabric • Slightly elasticated



RACING RIDER FOOTPEG KIT

890276

- Accessory in billet aluminium • Ideal for track use
- Raised by 16 mm • Set back by 12 mm
- Designed in collaboration with the Aprilia style centre
- Tested in-house in accordance with the most stringent Aprilia quality standards
- For track use only



RACING PASSENGER FOOTPEG KIT

890275

- Accessory in billet aluminium • For track use only



REAR PADDOCK STAND

AP8705021

- Ideal for maintenance whether in the pits or in your garage
- Allows the rear wheel to be replaced quickly and conveniently



CENTRE STAND KIT

890099

- In high tensile steel • Powder coated • For optimum vehicle stability
- Homologated original Aprilia product • Fastener hardware kit included



ADJUSTABLE LICENSE PLATE MOUNTING KIT

890277

- Accessory in laser-cut steel • Eye-catching design • Uses original licence plate light
- Adjustable angle • Includes mounting for original reflector • For track use only



TANK BACKPACK

856952

- A sturdy and versatile travel companion • Made from Skay technical fabric and extra-strong polyester • 14 litre capacity • Fits onto tank cover with 3 snap fasteners • Specially designed not to interfere with arm movement when riding or obstruct visibility of instrumentation • Easy to carry after removal with practical shoulder strap • With waterproof rain hood



TANK COVER

856953

- Total protection against scratches, fuel and the weather • Covers the tank perfectly • Fuel cap remains easily accessible • Exterior in Skay technical fabric and extra-strong polyester • Washable and reusable protective film in electrostatic PVC • Snap fasteners for fitting onto tank bag



TAIL FAIRING BACKPACK

856954

- Further increases luggage capacity • Made from Skay technical fabric and extra-strong polyester • Fits quickly and securely onto the 4 hooks on the standard tail fairing



SEMI-RIGID PANNIER KIT

856955

- Dynamic safety and maximum protection for your luggage • Made from technical Skay • Extremely simple to fit and fasten onto the lateral mounts • Elegant and spacious with a total capacity of 42 litres • Equipped with reflectors to increase night visibility • Padlockable • Complete with rain hood



SEMI-RIGID PANNIER MOUNT KIT

858376

- Maximum durability and practicality • Made in high strength material • Media blasted and cathaphoresis treated against corrosion and wear • Allows fitment of side panniers • Integrated design



MANA
850

MANA
GT 850



LOW WINDSHIELD KIT

894090

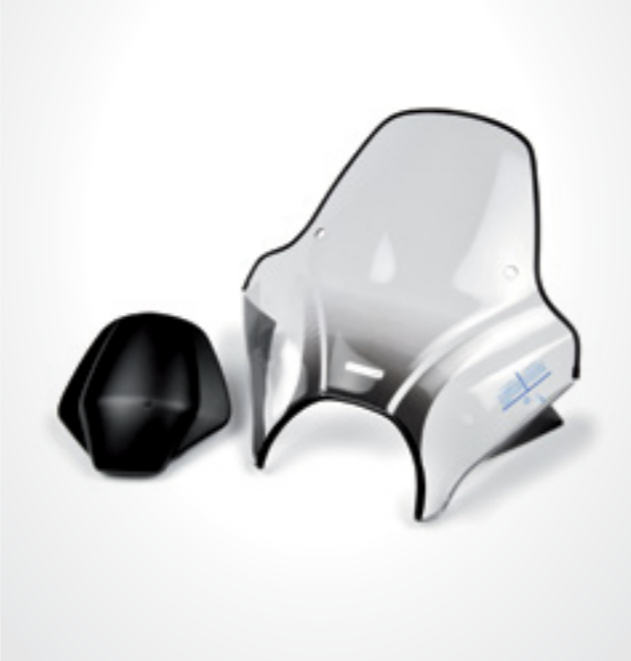
- Give the Mana a sportier look • Offers improved wind protection
- Made from smoked effect metacrylate • Complete with specific mounts, fastener hardware and installation instructions • As with all products developed by Aprilia, this product has been subjected to severe road tests in all weather conditions, lab tests and bench tests to ensure total quality and resilience



SPORTS WINDSHIELD KIT

860895

- In thermoformed scratch-resistant metacrylate
- Installed in just a few minutes with brushed finish stainless steel brackets



SPLASH GUARD KIT

851940

- Made from reinforced nylon • Fastener hardware kit included



AJUSTABLE REAR SHOCK ABSORBER KIT

895414

- Shock absorber with separate canister • With fully adjustable compression and rebound • Improved riding comfort and wheel dynamics • Reduces possibility of losing contact with ground



ADJUSTABLE FULL SIZED WINDSCREEN
SCREEN (SPARE PART)
DEFLECTOR (SPARE PART)

858382
858384
859877

- Designed and developed by the Aprilia style centre exclusively for the Mana
- Made from thermoformed material • Installed in just a few minutes with brushed finish stainless steel brackets • Adjustable with two different positions (high/low) to cater for riders of all statures



MOTORCYCLE COVER

894874

- Protects the bike totally against dust, scratches and minor knocks
- Made to measure entirely in Italy • Minute attention to detail
- Antistatic, warp-knit fabric • Slightly elasticated



PAIR OF SIDE PANNIERS WITH MOUNTING KIT

B043578

- Safety, sleek looks and protection for your luggage
- Extremely easy to fit and remove thanks to special lateral mounts
- Semi-rigid structure
- Designed, developed and tested together with the Mana
- Ensure ideal weight distribution when riding



CITY 35 TOP BOX

CM220401

- Textured finish with quick release system
- Practical handle for easy carrying
- May also be fitted with interchangeable cover painted in same colour as vehicle
- Spacious enough to easily accommodate two jet helmets
- May be fitted with comfortable passenger backrest



CITY 35 TOP BOX BACKREST

852312

- Comfortable passenger backrest
- Makes journeys even more comfortable for passengers



"SILVER LIKE" CITY 35 TOP BOX COVER

CM220823

- Personalised cover for City 35
- Painted in colour coded with vehicle frame
- Elegant personalised Mana badge on rear
- Extremely sophisticated



LUGGAGE RACK KIT

858541

- Maximum durability and practicality
- Made in high strength material
- Media blasted and cathaphoresis treated against corrosion and wear
- Allows fitment of City 35 top box



CENTRE STAND KIT

890100

- In high tensile steel
- Powder coated
- For optimum vehicle stability
- Homologated original Aprilia product
- Fastener hardware kit included



REAR PADDOCK STAND

AP8705021

- Ideal for maintenance whether in the pits or in your garage
- Allows the rear wheel to be replaced quickly and conveniently





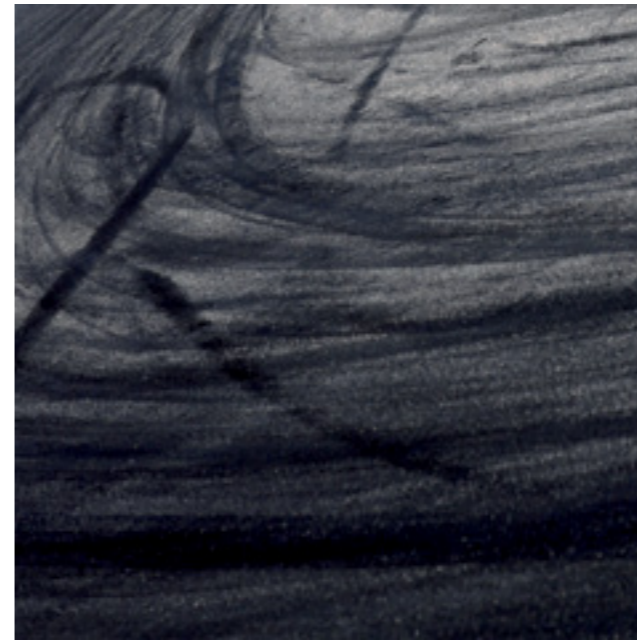
OFF ROAD

RACING COMPONENTS

MXV 4.5
RXV 4.5 / 5.5
SXV 4.5 / 5.5



RACE COMPONENTS



Gear up for the toughest and most exhilarating challenges with original Aprilia accessories. A complete choice of components developed specifically for each model drawing from experience gained in motorsports and put to the test on the most severe racing circuits. Transform your bike, benefiting from the same solutions and materials used in the world's most prestigious races. Reach unparalleled new levels of performance, freedom and reliability, and maximise your own capabilities with Aprilia.





MXV
RXV
SXV



MXV RXV SXV



TITANIUM SILENCER KIT FOR SXV

853816

• An exhaust system developed directly in the race arena in a collaboration between Aprilia Off Road Racing Team and the R&D team of Akrapovic Off Road • Silencer made entirely from titanium (interior and exterior) with carbon end-caps • Equipped with spark-arrester to prevent backfiring, and a mounting clamp in carbon • This exhaust may only be used in conjunction with the Aprilia by Akrapovic pipe kit, part No. 851442 or part No. 851443 • Exclusively for competition use in circuits closed to public traffic • Requires purchase of Racing Undertail Kit, part No. 851450



MAINTENANCE KIT FOR TITANIUM EXHAUST FOR SXV

853817

• Includes the material necessary to service the Akrapovic lateral exhaust and restore full functionality • Consists of a sound absorbing cartridge, clamps and rivets



SXV PIPE KIT IN

**STEEL
TITANIUM**

**851442
851443**

• Front and rear header pipes made entirely of titanium or steel
• For Aprilia by Akrapovic silencers, part No. 853816 (note: these products are NOT compatible with standard production parts)
• Exclusively for competition use in circuits closed to public traffic



RACING KIT FOR SXV

851377

• Front panel kit to make your SXV race-ready • Replaces the headlight to carry the front race number in compliance with F.M.I. regulations • Total functionality without compromising the looks of your bike • Exclusively for competition use in circuits closed to public traffic



RACING DECALS KIT

**WHITE
YELLOW
RED
GREEN**

**853935
853936
853937
853938**

• Includes coloured racing decals for: front race number panel, headlight panel, left and right side panels, right side panel for side exhaust • Exclusively for competition use in circuits closed



STARTING DEVICE KIT

851090

• System that locks the front fork in compression • Indispensable for supermoto race starts • Exclusively for competition use in circuits closed to public traffic



HAND RACE NUMBER PANEL

**LEFT
RIGHT**

**AP9100286
AP9100285**

• Side race number panel compliant with F.M.I. regulations • Functional and stylish
• Made from high strength polypropylene • Replaces the standard side panel and uses the same fasteners • Exclusively for competition use in circuits closed to public traffic



RIGHT HAND SIDE PANEL KIT FOR AKRAPOVIC EXHAUST

851448

• This side panel is used to replace the original standard part when installing an Akrapovic exhaust system with lateral silencer • Exclusively for competition use in circuits closed to public traffic



RACING UNDERTAIL KIT FOR SXV

851450

• Rear shock absorber guard
• For use on bikes fitted with Aprilia by Akrapovic exhaust
• Exclusively for competition use in circuits closed to public traffic



LOWERED SADDLE FOR RXV

851095

- Approximately 20 mm lower than standard measurement
- Allows greater bike control, even for riders of medium-short stature
- Exclusively for competition use in circuits closed to public traffic



HAND GUARD KIT FOR SXV

851084

- Pivot and reinforcement structure for maximum protection
- Total protection during falls
- Exclusively for competition use in circuits closed to public traffic



LOWERED SADDLE FOR SXV

851193

- Approximately 20 mm lower than standard measurement
- Allows greater bike control, even for riders of medium-short stature
- Exclusively for competition use in circuits closed to public traffic



SADDLE FOR OVERSIZED TANK RXV SXV

853841

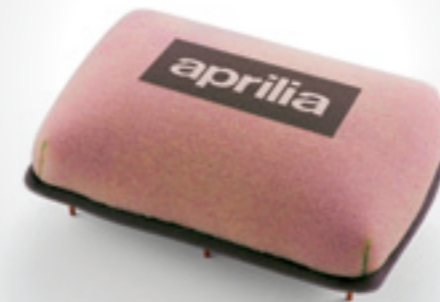
- Required when fitting the oversized fuel tank
- Exclusively for competition use in circuits closed to public traffic



RACING AIR FILTER KIT (CAGE AND FILTER)

851369

- Includes foam air filter and mounting basket
- Exclusively for competition use in circuits closed to public traffic

RADIATOR GUARD KIT IN ALUMINIUM
LH RADIATOR GUARD (SPARE PART)
RH RADIATOR GUARD (SPARE PART)851120
851121
851122

- Protects radiator in the event of a fall
- Exclusively for competition use in circuits closed to public traffic

OVERSIZED FUEL TANK RXV SXV
SET OF DECALS FOR OVERSIZED TANK 2011898640
XXXXXX

- The slender design makes it possible to increase tank capacity to 12 litres
- Exclusively for competition use in circuits closed to public traffic

REAR SPROCKET - WITH MUD
GROOVE - HARD ANODIZED ERGALZ=48
Z=49
Z=50
Z=51851391
851392
851393
851394

- Sprocket with different number of teeth than standard component
- For maximum traction in all terrain conditions
- Specific configuration to clear excess mud accumulating in gaps
- Exclusively for competition use in circuits closed to public traffic



PAIR OF RACING FRONT PADS FOR SXV

851408

- For maximum braking performance on the track
- Exclusively for competition use in circuits closed to public traffic



SHOCK ABSORBER SPRING FOR SXV K= 5.4 KGF/MM
K= 5.8 KGF/MM **851093**
851094

- Rear shock absorber spring available with different compression loads • Offers the user the possibility of adjusting the feel of the bike to their own weight, stature and riding style
- Exclusively for competition use in circuits closed to public traffic



SHOCK ABSORBER SPRING FOR RXV K= 4.5 KGF/MM
K= 5.0 KGF/MM **851091**
851092

- Rear shock absorber spring available with different compression loads • Offers the user the possibility of adjusting the feel of the bike to their own weight, stature and riding style
- Exclusively for competition use in circuits closed to public traffic



FORK SPRING KIT **0.45 KGF/MM SOFT** **851088**
SACHS - SUPERMOTARD **0.50 KGF/MM HARD** **851089**

- Allows the characteristics of the front fork to be modified to suit the weight, stature and riding style of the rider • Exclusively for competition use in circuits closed to public traffic



FORK SPRING **0.50 KGF/MM HARD** **851087**
MARZOCCHI - ENDURO **0.45 KGF/MM SOFT** **851086**

- Allows the characteristics of the front fork to be modified to suit the weight, stature and riding style of the rider • Exclusively for competition use in circuits closed to public traffic



HANDLEBAR BUMPERS **853702**

- Optimum protection for the rider against contact with the handlebar and upper yoke in the event of violent impact • Mandatory in many race classes



APRILIA OFF ROAD MOTORCYCLE COVER **854613**

- Protects the bike totally against dust, scratches and minor knocks
- Made to measure entirely in Italy • Minute attention to detail
- Antistatic, warp-knit fabric • Slightly elasticated

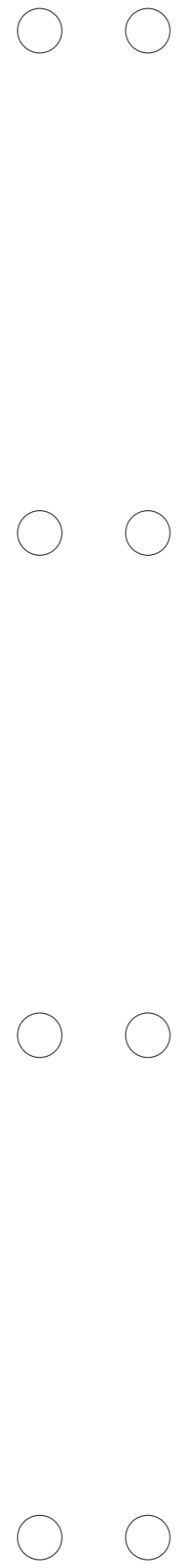


APRILIA MOTORCYCLE COVER **ROAD NAKED OFF ROAD** **854611**
854612
854613

- Protects the bike totally against dust, scratches and minor knocks
- Made to measure entirely in Italy • Minute attention to detail
- Antistatic, warp-knit fabric • Slightly elasticated



CARE & MAINTENANCE



APRILIA IRON GUARD 8-120

AP8720116

- The 120 cm length is suitable for all applications
- Easily stowable in the underseat storage compartment or in the top box
- Quick locking latch mechanism
- Reversible key
- Drill-proof protection
- Integrated ejector mechanism



APRILIA IRON GUARD 10-150

AP8720115

- Effective visual deterrent
- Generous 150 cm length to easily reach any anchor point
- Sturdy steel lock
- Chain in 10 mm tempered steel
- Lock body in 2 mm thick case hardened steel
- Drill-proof
- Lockpick-proof
- 5 disc lock



APRILIA DISC LOCK

AP8720117

- 5.5 mm disc lock tested on all disc brakes in the Aprilia range of vehicles
- Innovative design
- 5 mm pin in special steel
- Reversible key
- Automatically opening moisture protection cap
- Anticorrosion paint
- Carrier pouch included
- Safety cable for fastening to handlebar to prevent accidentally riding the vehicle with the anti-theft device in place



APRILIA EASY GUARD 150

AP8720118

- Light, versatile cable
- 150 cm long but compact in size
- Tubular chain
- Waterproof sheath



REAR PADDOCK STAND

AP8705021

- Ideal for maintenance whether in the pits or in your garage
- Allows the rear wheel to be replaced quickly and conveniently



BATTERY CHARGE KEEPER

AP8707120



SCOOTERS

PROTECTION
TRANSPORT
CUSTOMIZE

- SPORTCITY CUBE 300 / 125
- SPORTCITY ONE 125 / 50 4 STROKE / 50 STREET
- ATLANTIC 300 / 125
- SR 50 R / R FACTORY / STREET

APRILIA SCOOTERS REPRESENT AN ORIGINAL CONCEPT FOR MOBILITY - A WORLD WHERE BEAUTY, FUNCTION, COMFORT AND DYNAMICS MERGE TO IMPROVE THE QUALITY OF LIFE. ORIGINAL APRILIA ACCESSORIES ARE THE ONLY PRODUCTS DESIGNED DURING THE ACTUAL DEVELOPMENT OF THE INDIVIDUAL MODELS THEMSELVES, TO REFLECT THE CORE VALUES OF THE BRAND AND TO MAKE EACH APRILIA SCOOTER EVEN MORE COMPLETE, PERSONALISED AND SAFE. THESE PRODUCTS HAVE ALL PASSED STRINGENT TESTS THAT RECREATE EVERY POSSIBLE CONDITION AND SITUATION: FROM THE TRAFFIC OF A MAJOR DUAL CARRIAGEWAY TO THE COBBLED STREETS OF A HISTORIC CITY CENTRE. THEY ALSO COME WITH PAINT FINISHES TESTED BY APRILIA AND IN THE SAME COLOUR AS THE SCOOTER. THAT'S WHY ANYONE CHOOSING AN APRILIA SCOOTER ALSO CHOOSES GENUINE APRILIA ACCESSORIES.



PROTECTION



TRANSPORT



Tackle any weather and season with confidence with the windscreens and other accessories by Aprilia, conceived to offer maximum wind and weather protection and enhance rider safety through superior quality materials, ergonomic design and minimised turbulence. Designed to complement the style of the different models in the Aprilia range, these accessories make your scooter even more practical and versatile in every situation: the weather's always right for riding an Aprilia.



With the Aprilia range of top boxes, the scooter becomes the perfect means of transport for all your daily necessities: from shopping to leisure and from studying to work. The superior capacity of these accessories means that you can take everything you need with you, moving with ease and agility through the traffic. Their compact dimensions save parking space and maximise safety when on the road. Their style is perfectly coordinated with the design and finish of the scooter: choosing Aprilia always means choosing the best.



CUSTOMIZE



The Aprilia top box is more than just an accessory - it is an expression of individual style. Choose the perfect top box for your own personal needs from the Aprilia range. There's the **New Concept** top box with a textured black finish, the capacious 47 litre **Street Case** top box and the compact **Ovetto** top box, available in a number of different colours to match different models in range and allow you to colour code your scooter to perfection. Alternatively, you could even personalise the **City** top box with the top and bottom protective covers available in a range of colours to match your vehicle (or in a colour of your own preference) and personalised with the name of your Aprilia scooter or motorcycle. Top boxes can also be enhanced with the added comfort of a passenger backrest, which is ideal for both long journeys and short distances.



SPORTCITY
CUBE
300 125
ONE
125 50
50 STREET



COMPLETE LARGE WINDSCREEN FOR
REPLACEMENT LARGE SCREEN FOR
COMPLETE SPORTS WINDSCREEN FOR
REPLACEMENT SPORTS SCREEN FOR

CUBE
CUBE
CUBE
CUBE

890280
890278
890281
890279

COMPLETE LARGE WINDSCREEN FOR
REPLACEMENT LARGE SCREEN FOR
COMPLETE SPORTS WINDSCREEN FOR
REPLACEMENT SPORTS SCREEN FOR

ONE
ONE
ONE
ONE

890370
890368
890371
890369

• Excellent protection • Superlative design • Maximum riding pleasure • Materials selected to ensure maximum safety without compromising the stylish looks of the Sportcity

• With the luggage rack fitted as standard on the Sportcity Cube, the top box can be removed in a simple single action



**CITY 35
CITY 35 ONE
CITY 35 TOP BOX COVER**

CM224801
CM220401

- Textured finish with quick release system
- Practical handle for easy carrying
- May also be fitted with interchangeable cover painted in same colour as vehicle
- Spacious enough to easily accommodate two jet helmets
- With provision for mounting system on Cube
- Anti-vibration weight kit available to improve stability in all situations (ONE part No. 890648, CUBE part No. 852114)



- Personalised cover for City 35 top box
- Painted in colour coded with vehicle
- Elegant chromed badge at rear with name of vehicle
- Extremely sophisticated



DIABLO BLACK
CM220835

ESCAPE GREY
CM220828

GLAM WHITE
CM220836

APRILIA BLACK
CM220809

SIDE STAND KIT - CUBE

890142

- Supplementary stand
- For easier, quicker parking
- Ensures the stability and safety of your vehicle



**NEW CONCEPT TOP BOX IN BLACK TEXTURED
FINISH LUGGAGE RACK FOR SPORTCITY ONE**

AP8792066
890372

- Space, style and practicality
- Outstanding load capacity of 32 litres
- Superlative looks
- Simplified fitment with mounting plate contained inside top box itself
- Anti-vibration weight kit available to improve stability in all situations (ONE part No. 890648, CUBE part No. 852114)
- Specific luggage rack designed for Sportcity One also available



CITY 35 TOP BOX BACKREST

852312

- Comfortable passenger backrest
- Makes journeys even more comfortable for passengers



SIDE STAND KIT - ONE

890633

- Supplementary stand
- For easier, quicker parking
- Ensures the stability and safety of your vehicle



LEG COVER

AP8797003

- Designed specifically for the forms of the Sportcity
- Comfort and safety
- Traditional ties replaced by Velcro for greater freedom of movement for rider
- Effective insulation ensured by high quality materials that are both light and totally waterproof
- With closed cell foam and Lycra
- Ideal for riders of all statures



VEHICLE COVER

605293M002

- Outdoor vehicle cover in black waterproof material with thermobonded seams, reflector strip and clear window for license plate
- With adjustable elastic hem for a secure fit and pouches for additional accessories such as top boxes and windscreen



**ELECTRONIC ANTITHEFT SYSTEM
INSTALLATION KIT FOR SPORTCITY CUBE
INSTALLATION KIT FOR SPORTCITY ONE 125
INSTALLATION KIT FOR SPORTCITY ONE 50 4 STROKE/STREET**

605324M
605325M005
605325M006
605325M004

- Protects without damaging the electronic control unit
- State of the art technology
- CE STANDARD and SRA certified
- Self-contained power supply



ATLANTIC 300 125



PASSENGER BACKREST KIT BLACK PASSENGER BACKREST CUSHION

AP8703057
605474M

4 MM WINDSCREEN

852996

- Design integrated perfectly with the luggage rack • Sturdy construction for proven safety
- Padded backrest designed specifically for superior ergonomics to ensure maximum comfort
- Indispensable in the city and comfortable for longer journeys
- For use together with backrest cushion

- Total rider protection without compromising rideability
- No mounting brackets used for installation, making the accessory easy to fit and preserving the looks of the vehicle
- Complements the design of the Atlantic perfectly
- High quality materials ensuring superlative safety
- Enhanced comfort, riding pleasure and sportiness in every situation, from city commuting to a trip to the beach



LEG COVER AP8796614

- Designed specifically for the forms of the Atlantic • Comfort and safety • Traditional ties replaced by Velcro for greater freedom of movement for rider • Effective cover insulation ensured by high quality materials that are both light and totally waterproof • With closed cell foam and Lycra • Ideal for riders of all statures



VEHICLE COVER 605293M001

- Outdoor vehicle cover in black waterproof material with thermobonded seams, reflector strip and clear window for license plate • With adjustable elastic hem for a secure fit and pouches for additional accessories such as top boxes and windscreen



CITY 35 TOP BOX
CITY 35 TOP BOX BACKREST
CITY 35 TOP BOX COVER CM220401
852312

- Textured finish with quick release system • Practical handle for easy carrying
- May also be fitted with interchangeable cover painted in same colour as vehicle
- Spacious enough to easily accommodate two jet helmets • May be fitted with comfortable passenger backrest



- Personalised cover for City 35 top bpx • Painted in colour coded with vehicle
- Elegant chromed badge at rear with name of vehicle
- Extremely sophisticated



STREET CASE 47 LTS TOP BOX
STREET CASE TOP BOX BACKREST CM220301
852313

- Textured finish with quick release system • Practical handle for easy carrying
- Guaranteed safety • Top box and vehicle subjected to thousands of kilometres of severe testing fully loaded • 47 litre capacity • Spacious enough to easily accommodate two flip-up helmets • May be fitted with comfortable passenger backrest



- Also available painted in colour matching vehicle



SR 50 R
R FACTORY
STREET



SPORTS COMPLETE WINDSCREEN R/R FACTORY STREET / DITECH
AP8791258
AP8791131

- Maximum rider protection • Greater riding pleasure
- Aggressive design



LARGE COMPLETE WINDSCREEN - R/R FACTORY AP8791256

- High quality materials ensuring superlative safety
- Superlative protection • Dynamic design • Complements the design of the SR perfectly
- Enhanced comfort, riding pleasure and sportiness in every situation, from city commuting to a trip to the beach



**REAR SHOCK ABSORBER
R/R FACTORY**

AP8795050

- Professional shock absorber with adjustable spring preload with 4 settings
- Hydraulic compression and rebound damping
- Gives the SR race-like handling

**DEFLECTOR KIT**

R/R FACTORY

AP8797216

- Deflectors to be applied to lower part of leg shield
- Improved aerodynamics and foot protection
- Even more race-like looks

**SIDE STAND KIT FOR
SIDE STAND KIT FOR**R/R FACTORY
STREET / DITECHAP8791240
AP8790154

- Supplementary stand
- For easier, quicker parking
- Ensures the stability and safety of your vehicle

**LUGGAGE RACK KIT FOR**

R/R FACTORY

AP8792368

- Luggage rack with grab handles
- Designed to hold New Concept top box
- Maximum stability on the road
- Practical handles make parking significantly easier

**NEW CONCEPT TOP BOX
IN BLACK TEXTURED FINISH**

AP8792066

- Space, style and practicality
- Outstanding load capacity of 32 litres
- Superlative looks
- Simplified fitment with mounting plate contained inside top box itself
- For SR50 Ditech/Street: minirobot mounting kit (part no. AP8793051) required for installation of top box

**SCARA
BEO**

SCARABEO 500 IE / 300 S IE
SCARABEO 200 IE / 125 IE
SCARABEO 100 4 STROKE / 50 4 STROKE
SCARABEO 50 STREET



AN ITALIAN DESIGN LEGEND, A MODERN DAY ICON, THE SYMBOL OF A LIFESTYLE: SCARABEO IS ALL OF THIS AND MORE. AS UNIQUE AS ITS ORIGINAL ACCESSORIES, CONCEIVED SPECIFICALLY TO COMPLEMENT ITS UNMISTAKABLE DESIGN AND TESTED SEVERELY IN THE LAB, ON THE ROAD AND IN CITY TRAFFIC. EVERYTHING FROM TOP BOXES AND SADDLES TO WINDSCREENS AND HELMETS, TO GIVE YOUR SCOOTER A COORDINATED LOOK WITH THE ASSURANCE OF THE QUALITY, EXPERIENCE AND EXCELLENCE OF GENUINE APRILIA PRODUCTS. MADE WITH THE SAME MATERIALS, PAINTS AND COLOURS AS THE WORLD'S MOST ORIGINAL SCOOTER: 100% SCARABEO.



○ ○

SCARABEO
500 IE
300 S IE



○ ○

○ ○

○ ○





COMPLETE LARGE WINDSCREEN AP851981

- High windscreen with hand guards and chrome finish mounts • Maximum performance
- Total protection • Innovative design perfectly integrated with the style of the Scarabeo



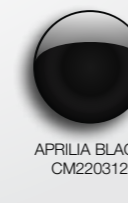
COMPLETE ADJUSTABLE WINDSHIELD 853002

- Height-adjustable windshield with chrome finish mounts • Maximum performance
- Total protection • Innovative design perfectly integrated with the style of the Scarabeo



STREET CASE 47 LTS TOP BOX

- Painted for matching with vehicle • Quick release system • Functional handle for easy carrying
- Guaranteed safety • Top box and vehicle subjected to thousands of kilometres if severe testing fully loaded • 47 litre capacity • Spacious enough to easily accommodate two flip-up helmets • May be fitted with comfortable passenger backrest



STREET CASE 47 LTS TOP BOX CM220301

- Textured finish with quick release system • Practical handle for easy carrying
- Guaranteed safety • Top box and vehicle subjected to thousands of kilometres of severe testing fully loaded • 47 litre capacity • Spacious enough to easily accommodate two flip-up helmets • May be fitted with comfortable passenger backrest



CITY 35 TOP BOX CM220401

- Textured finish with quick release system • Practical handle for easy carrying
- May also be fitted with interchangeable cover painted in same colour as vehicle
- Spacious enough to easily accommodate two jet helmets • May be fitted with comfortable passenger backrest



CITY 35 TOP BOX BACKREST 852312
STREET CASE TOP BOX BACKREST 852313

- Comfortable passenger backrest • Makes journeys even more comfortable for passengers



CITY 35 TOP BOX COVER

- Personalised cover for City 35 top box
- Paint finish colour-coded with vehicle
- Extremely sophisticated

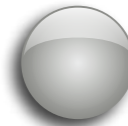


PLATE KIT AP851984

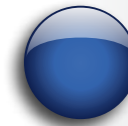
- Top box mounting plate kit • Anti-vibration weights • Developed for the Scarabeo by the Aprilia R&D division specifically for the frame of the vehicle • Optimum stability ensured even in different load conditions



APRILIA BLACK CM220818



CROWD SILVER CM220820



COUTURE BLUE CM220814



COMPETITION BLACK CM220829



GLAM WHITE CM220830



CRUISER GREY CM220831



scarabeo

500 IE / 300 S IE



**ELECTRONIC ANTITHEFT SYSTEM
INSTALLATION KIT**

605324M
605325M003

- Protects without damaging the electronic control unit
- State of the art technology
- CE STANDARD and SRA certified
- Self-contained power supply



SCARABEO
200 IE
125 IE



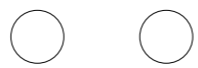
scarabeo

200 IE / 125 IE

VEHICLE COVER

605293M003

- Outdoor vehicle cover in black waterproof material with thermobonded seams, reflector strip and clear window for license plate
- With adjustable elastic hem for a secure fit and pouches for additional accessories such as top boxes and windscreen





COMPLETE LARGE WINDSCREEN 853491

- High windscreen with hand guards and chrome finish mounts • Maximum performance
- Total protection • Innovative design perfectly integrated with the style of the Scarabeo



SIDE STAND KIT 853489

- Supplementary stand • For easier, quicker parking • Ensures the stability and safety of your vehicle • Exclusive SAFETY BLOCK system



TUNNEL BAG 856959

- Tunnel bag in polyester • 28 litre capacity • Maximum comfort with no inconvenience for rider • Extremely easy to fit and with quick release system • Includes outer rain hood
- Practical handle for easy carrying



CITY 35 TOP BOX CM220401
CITY 35 TOP BOX COVER

- Textured finish with quick release system • Practical handle for easy carrying
- May also be fitted with interchangeable cover painted in same colour as vehicle
- Spacious enough to easily accommodate two jet helmets • May be fitted with comfortable passenger backrest



- Personalised cover for City 35 top box
- Paint finish colour-coded with vehicle
- Extremely sophisticated



COUTURE BLUE
CM220814



FLAIR WHITE
CM220832



CROWD SILVER
CM220820



APRILIA BLACK
CM220818

NEW CONCEPT TOP BOX AP8792066
IN BLACK TEXTURED FINISH

- Space, style and practicality • Outstanding load capacity of 32 litres • Superlative looks
- Simplified fitment with mounting plate contained inside top box itself



OVETTO TOP BOX

- 24 litre capacity • Transforms into a comfortable, safe backrest for the passenger
- Practical and exclusive, with a painted cover



COUTURE BLUE
AP8798209



FLAIR WHITE
AP8798221



CROWD SILVER
AP8798215



APRILIA BLACK
AP8798212





CITY 35 TOP BOX BACKREST 852312

- Comfortable passenger backrest • Makes journeys even more comfortable for passengers



TOP BOX PLATE KIT 672342

- Top box mounting plate kit • Anti-vibration weights • Optimum stability ensured even in different load conditions



VEHICLE COVER 605293M003

- Outdoor vehicle cover in black waterproof material with thermobonded seams, reflector strip and clear window for license plate • With adjustable elastic hem for a secure fit and pouches for additional accessories such as top boxes and windscreen



ELECTRONIC ANTITHEFT SYSTEM INSTALLATION KIT 605324M
605325M007

- Protects without damaging the electronic control unit • State of the art technology • CE STANDARD and SRA certified • Self-contained power supply



SCARABEO
100 4T
50 4T



COMPLETE LARGE WINDSCREEN AP8791193

- High windscreen with hand guards and cataphoresis treated mounts
- Maximum performance
- Total protection
- Innovative design perfectly integrated with the style of the Scarabeo





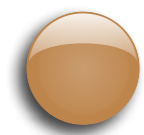
OVETTO TOP BOX

AP8796616

- 24 litre capacity • Transforms into a comfortable, safe backrest for the passenger
- Practical and exclusive, with a painted cover



MOOD RED
AP8798222



STYLE BRONZE
AP8798223



COMPETITION
BLACK
AP8798219



YORK GREY
AP8798220



CULT WHITE
AP8798208

LEG COVER

AP8796616

- Designed specifically for the forms of the Scarabeo • Comfort and safety • Traditional ties replaced by Velcro for greater freedom of movement for rider • Effective insulation ensured by high quality materials that are both light and totally waterproof • With closed cell foam and Lycra • Ideal for riders of all statures



VEHICLE COVER

605293M004

- Outdoor vehicle cover in black waterproof material with thermobonded seams, reflector strip and clear window for license plate • With adjustable elastic hem for a secure fit and pouches for additional accessories such as top boxes and windscreen



RIGHT HAND MIRROR

AP8796011

- Supplementary mirror
- For maximum visibility
- For city riding in complete safety



**PASSENGER FOOTPEG KIT
LUXURY
PASSENGER FOOTPEG KIT**

AP8793052

853224

- To transform the Scarabeo 50 into a two-seater scooter • Compliant with applicable legislation



**ELECTRONIC ANTITHEFT
SYSTEM
INSTALLATION KIT**

605324M

605325M001

- Protects without damaging the electronic control unit
- State of the art technology
- CE STANDARD and SRA certified • Self-contained power supply



**SCARABEO
50 STREET**



COMPLETE LARGE WINDSCREEN

AP8791193

- High windscreen with hand guards and cataphoresis treated mounts
- Maximum performance
- Total protection
- Innovative design perfectly integrated with the style of the Scarabeo





scarabeo

50 STREET

NEW CONCEPT TOP BOX IN BLACK TEXTURED FINISH AP8792066

- Space, style and practicality
- Outstanding load capacity of 32 litres
- Superlative looks
- Simplified fitment with mounting plate contained inside top box itself



PASSENGER FOOTPEG KIT LUXURY PASSENGER FOOTPEG KIT AP8793052 853224

- To transform the Scarabeo 50 into a two-seater scooter
- Compliant with applicable legislation



PASSENGER SADDLE WITH STRAP PASSENGER SADDLE MOUNT 605475M AP8793698

- Homologated passenger saddle
- Includes strap fixed to the frame and tested with a pull-out stress of 200 Kg



VEHICLE COVER 605293M004

- Outdoor vehicle cover in black waterproof material with thermobonded seams, reflector strip and clear window for license plate
- With adjustable elastic hem for a secure fit and pouches for additional accessories such as top boxes and windscreen



RIGHT HAND MIRROR AP8796011

- Supplementary mirror
- For maximum visibility
- For city riding in complete safety



ELECTRONIC ANTI-THEFT SYSTEM INSTALLATION KIT 605324M 605325M001

- Protects without damaging the electronic control unit
- State of the art technology
- CE STANDARD and SRA certified
- Self-contained power supply



CARE & MAINTENANCE

APRILIA IRON GUARD 10-150 AP8720115

- Effective visual deterrent
- Generous 150 cm length to easily reach any anchor point
- Sturdy steel lock
- Chain in 10 mm tempered steel
- Lock body in 2 mm thick case hardened steel
- Drill-proof
- Lockpick-proof
- 5 disc lock



APRILIA DISC LOCK AP8720117

- 5.5 mm disc lock tested on all disc brakes in the Aprilia range of vehicles
- Innovative design
- 5 mm pin in special steel
- Reversible key
- Automatically opening moisture protection cap
- Anticorrosion paint
- Carrier pouch included
- Safety cable for fastening to handlebar to prevent accidentally riding the vehicle with the antitheft device in place



APRILIA IRON GUARD 8-120 AP8720116

- The 120 cm length is suitable for all applications
- Easily stowable in the underseat storage compartment or in the top box
- Quick locking latch mechanism
- Reversible key
- Drill-proof protection
- Integrated ejector mechanism



APRILIA EASY GUARD 150 AP8720118

- Light, versatile cable
- 150 cm long but compact in size
- Tubular chain
- Waterproof sheath



BATTERY CHARGE KEEPER AP8707120





HELMETS

RSV4 CARBON
APRILIA RACING
APRILIA TOURING
APRILIA STREET
APRILIA MODULAR
APRILIA OFF ROAD
SCARABEO

APPAREL & MERCH AND ISING



RSV4 CARBON



RSV4 CARBON FULL FACE HELMET	XS S M	899577 899578 899579	RSV4 CARBON FULL FACE HELMET	L XL	899580 899581
-------------------------------------	-----------------------	-------------------------------------	-------------------------------------	-----------------	--------------------------

- Developed on the track in collaboration with professional riders
- 3-layer shell (fibreglass, carbon fibre and Kevlar)
- Outer layer made of visible carbon fibre
- Weight ~ Gr. 1300
- 2 available shell sizes: small XS-M; large L-XL (61)
- Inner liner is removable, washable and breathable
- Ventilation system with 8 air intakes
- Chin strap with double ring fastener
- Visor adjustment racing system, made of metal

Available spare parts:

- 899779 Metal visor mechanism Kit + visor 2011
- 899594 Metal visor mechanism supplied with screws
- 899595 Transparent visor
- 899596 75% Dark tinted visor
- 899597 Transparent tear-off visor - racing use
- 899598 75% dark tinted tear-off visor - racing use
- 898646 Set of black top air intakes
- 898647 Set of black front vents
- 898648 Black bottom air intakes
- 898649 Black rear spoiler
- 898651 Set of black rear extractors
- 898650 Inner liner + cheek pads Kit XS
- 886747 Inner liner + cheek pads Kit S
- 886748 Inner liner + cheek pads Kit M
- 886749 Inner liner + cheek pads Kit L
- 886750 Inner liner + cheek pads Kit XL

(Spare parts for model 2009/10)

- 898645 Black visor mechanism, plastic
- 896053 RSV4 Helmet visor, transparent
- 896054 75% Dark tinted RSV4 helmet visor
- 896051 RSV4 Helmet visor, transparent tear-off, racing use
- 896052 RSV4 dark tinted helmet visor 75% dark tinted tear-off - racing use



APRILIA RACING



APRILIA TOURING



APRILIA RACING FULL FACE HELMET	XS	899582
	S	899583
	M	899584

APRILIA RACING FULL FACE HELMET	L	899585
	XL	899586
	XXL	899587

- Developed on the track in collaboration with professional riders
- Shell made of three materials (fibreglass, carbon fibre and Kevlar)
- Weight ~ Gr. 1300
- 3 available shells: small XS-M; medium L-XL (61); large XXL (62)
- Inner liner is removable, washable and breathable
- Ventilation system with 8 air intakes
- Chin strap with double ring fastener
- Visor adjustment racing system, made of metal

- Available spare parts:**
- 899779 Metal visor mechanism Kit + visor 2011
 - 899594 Metal visor mechanism supplied with screws
 - 899595 Transparent visor
 - 899596 75% Dark tinted visor
 - 898653 Top air intake
 - 898654 Bottom air intake
 - 898655 Inner liner + cheek pads Kit XS
 - 886752 Inner liner + cheek pads Kit S
 - 886753 Inner liner + cheek pads Kit M
 - 886754 Inner liner + cheek pads Kit L
 - 886755 Inner liner + cheek pads Kit XL
 - 886756 Inner liner + cheek pads Kit XXL

- (Spare parts for model 2009/10)
- 898652 Black visor mechanism, plastic
 - 898656 Scratch-proof/AF Clear visor



APRILIA TOURING FULL FACE HELMET	XS	899588
	S	899589
	M	899590

APRILIA TOURING FULL FACE HELMET	L	899591
	XL	899592
	XXL	899593

- Developed on the track in collaboration with professional riders
- Shell made of three materials (fibreglass, carbon fibre and Kevlar)
- Weight ~ Gr. 1300
- 3 available shells: small XS-M; medium L-XL (61); large XXL (62)
- Inner liner is removable, washable and breathable
- Ventilation system with 8 air intakes
- Chin strap with double ring fastener
- Racing visor adjustment system

- Available spare parts:**
- 899779 Metal visor mechanism + visor kit
 - 899594 Metal visor mechanism supplied with screws
 - 899595 Transparent visor
 - 899596 75% Dark tinted visor
 - 898653 Top air intake
 - 898654 Bottom air intake
 - 898655 Inner liner + cheek pads Kit XS
 - 886752 Inner liner + cheek pads Kit S
 - 886753 Inner liner + cheek pads Kit M
 - 886754 Inner liner + cheek pads Kit L
 - 886755 Inner liner + cheek pads Kit XL
 - 886756 Inner liner + cheek pads Kit XXL

- (Spare parts for model 2009/10)
- 898652 Black visor mechanism, plastic
 - 898656 Scratch-proof/AF Clear visor



APRILIA STREET



APRILIA STREET FULL FACE HELMET BLACK	XS	897131
	S	897132
	M	897133

APRILIA STREET FULL FACE HELMET WHITE	XS	B043232
	S	B043233
	M	B043234

APRILIA STREET FULL FACE HELMET BLACK	L	897134
	XL	897135
	XXL	897136

APRILIA STREET FULL FACE HELMET WHITE	L	B043235
	XL	B043236
	XXL	B043237

- Shell made of thermoplastic material
- Inner liner is removable, washable and breathable
- Ventilation system with 2 air intakes
- Chin strap with quick release fastener
- Colour: gloss black with graphics
- Sizes: XS to XXL
- 2 available shell sizes: small XS-M; large L-XXL (62)

Available spare parts:

- 898669 Visor mechanism supplied with screws
- 898670 Top air intake
- 898671 Bottom air intake
- 898673 Clear visor
- 898672 Inner liner + cheek pads Kit XS
- 886761 Inner liner + cheek pads Kit S
- 886762 Inner liner + cheek pads Kit M
- 886763 Inner liner + cheek pads Kit L
- 886764 Inner liner + cheek pads Kit XL
- 886765 Inner liner + cheek pads Kit XXL



APRILIA MODULAR



APRILIA TOURING FLIP-UP HELMET	XS	897125
	S	897126
	M	897127

APRILIA TOURING FLIP-UP HELMET	L	897128
	XL	897129
	XXL	897130

- Shell in atheroplastic material
- Removable, breathable and washable
- Internally adjustable retention system
- Chin strap with quick release fastener
- Straps with adjustable retention system
- Quick opening mechanism for the visor (one hand operation)
- Gloss grey with graphics
- 2 available shell sizes: small XS-M; large L-XXL (62)

Spare parts available:

- 898677 Inner liner + cheek pads Kit XS
- 886766 Inner liner + cheek pads Kit S
- 886767 Inner liner + cheek pads Kit M
- 886768 Inner liner + cheek pads Kit L
- 886769 Inner liner + cheek pads Kit XL
- 886770 Inner liner + cheek pads Kit XXL
- 886771 Clear visor
- 898674 Visor mechanism



APRILIA OFF ROAD



APRILIA OFF ROAD HELMET	XS	897137	APRILIA OFF ROAD HELMET	L	897140
	S	897138		XL	897141
	M	897139			

- Shell made of thermoplastic material
- Inner liner is removable, washable and breathable
- Ventilation system with 4 vacuum ports and 1 air intake
- Peak with graphics
- Chin strap with micrometric release fastening
- Colour: gloss white with graphics
- Sizes: XS - XL

- Available spare parts:**
- 898664 Inner liner + cheek pads Kit XS
 - 886757 Inner liner + cheek pads Kit S
 - 886758 Inner liner + cheek pads Kit M
 - 886759 Inner liner + cheek pads Kit L
 - 886760 Inner liner + cheek pads Kit XL
 - 898663 Bottom air intake
 - 898665 Peak with Aprilia graphics
 - 898666 Transparent screw
 - 898667 Set of rear extractors
 - 898668 Rear central extractor



SCARA BEO



SCARABEO HELMET - WHITE/GREEN	XS	897780	SCARABEO HELMET - WHITE/PINK	XS	897785
	S	897781		S	897786
	M	897782		M	897787
	L	897783		L	897788
	XL	897784		XL	897789

SCARABEO HELMET - BLACK/SILVER	XS	897790
	S	897791
	M	897792
	L	897793
	XL	897794

- Demi-jet with visor
- ABS shell
- Aluminium visor mechanism screw
- Inner liner made of non-allergenic material
- Chin strap with micrometric fastening
- 3 types of graphics/colour: pearl/pink, pearl/green, black/silver
- Available sizes: XS - XL

- Available spare parts:**
- 897804 Set of screws
 - 897805 Transparent visor



APPAREL & MERCH AND ISING



RACING BACK GUARD	XS/S M/L XL/XXL	894574 894575 896806	RACING BACK GUARD	XS/S M/L XL/XXL	896807 896808 896809
--------------------------	-----------------------	----------------------------	--------------------------	-----------------------	----------------------------



RSV4 BEANIE CAP 895718

- Material 50% acrylic 50% wool
- Customised with graphics RSV4



APRILIA RACING BEANIE CAP 895718

- Material 50% acrylic 50% wool
- Customised with graphics RSV4
- Aprilia Racing Refracting Label



RSV4 BASEBALL CAP 895720

- Lightweight technical fabric
- Refracting graphics
- Customised metal lock clip



APRILIA RACING BASEBALL CAP 895721

- 100% cotton
- Refracting graphics
- Customised metal lock clip



RSV4 SUNGLASSES 896771

- Cylindrical 3.2-mm polycarbonate lens with high shock resistance
- 8/10 steel brushed frame, non-allergenic, elastic and with shape-memory
- Rods with carbon insert that evokes some of the RSV4 details
- Laser-engraved RSV4 logo
- Adjustable nose-piece



RSV4 POSTMAN STYLE BAG 895718

- Waterproof Postman bag TPU
- Laptop padded bag
- Refracting graphics
- With shoulder strap and waist belt



APRILIA RACING POSTMAN STYLE BAG 895717

- Waterproof Postman bag TPU
- Laptop padded bag
- Refracting graphics
- With shoulder strap and waist belt



APRILIA RACING DRY BAGS 30 LT 895723
60 LT 895724

- Waterproof tarpaulin bag.
- Volume 30 LT and 60 LT
- 4-point anchoring system
- Refracting details
- Zipper closure



APRILIA RACING HELMET BAG 895722

- Comfortable padded helmet bag
- Able to contain a flip up helmet
- Glove pocket on the bottom
- High resistance material with zipper
- Refracting details
- Aprilia Racing Logo
- With handle and removable shoulder strap



